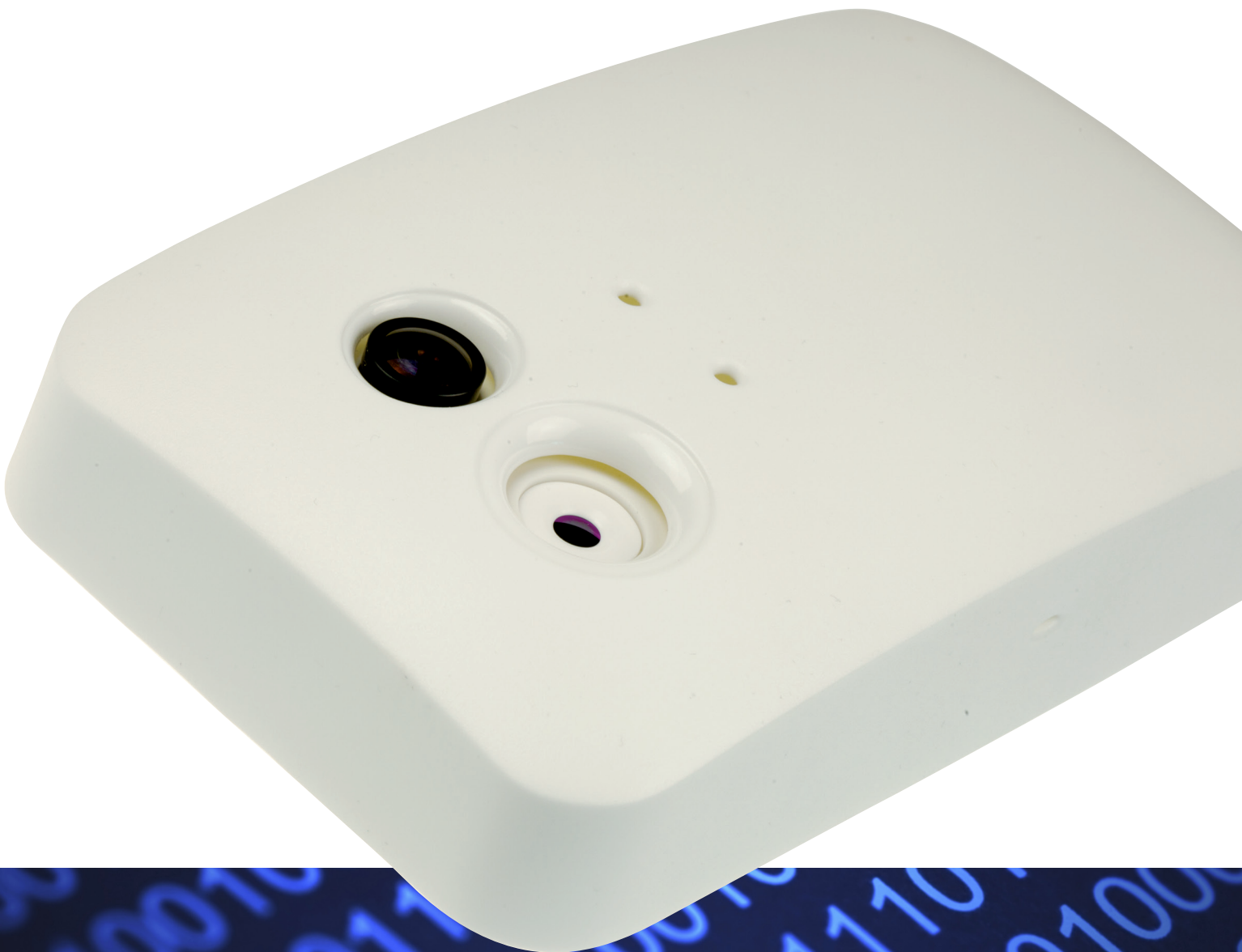


Irisys
Smart Range

Gazelle Software Suite



Enterprise Wide Support Tool

Product Information



Gazelle Software Suite

The **Gazelle™** Intelligent Analytic Solution is accompanied by a professional suite of modular software tools to remotely support and maintain **Gazelle** devices, as single units or as part of a worldwide estate. This suite includes a:

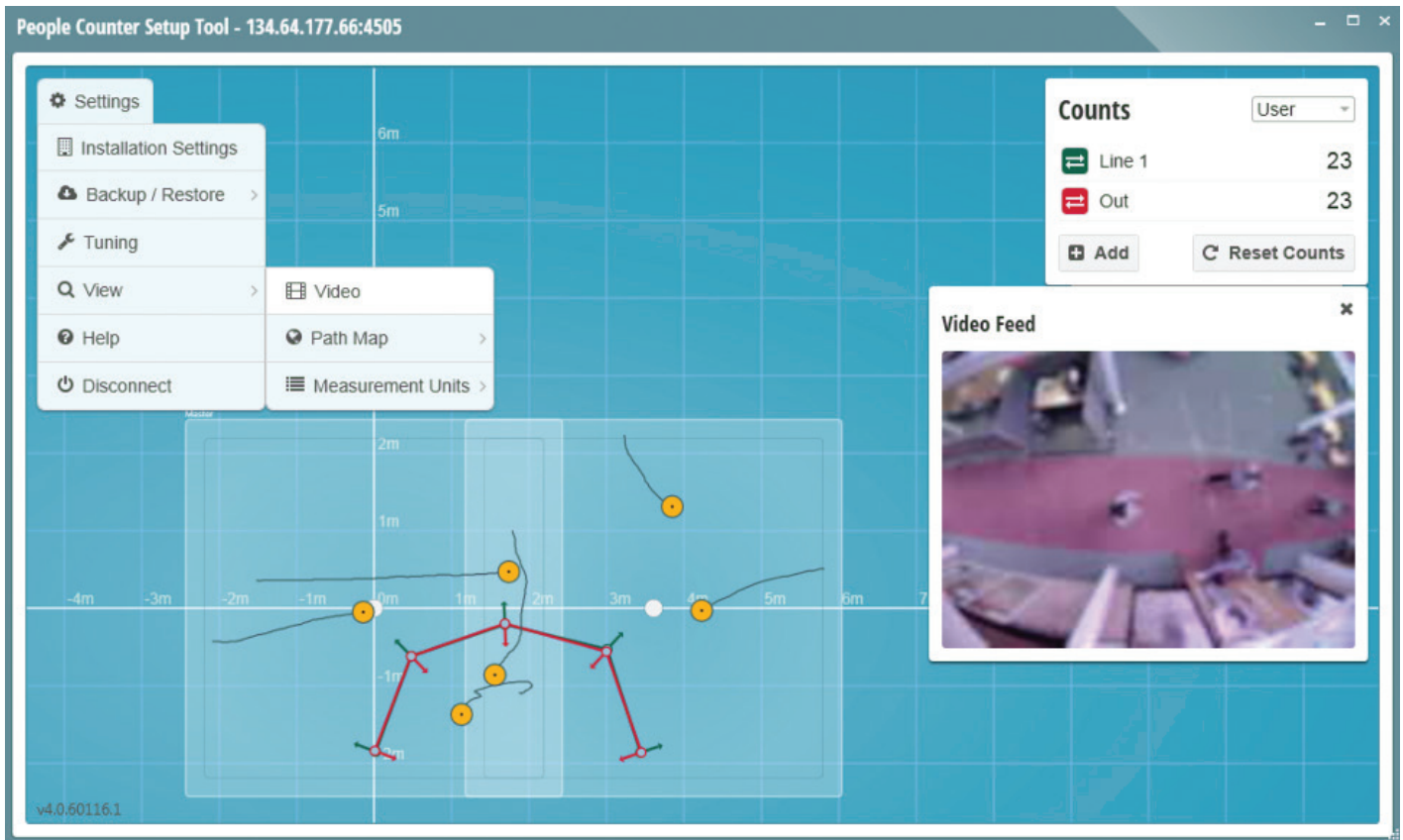
- Secure **People Counter Set-up and Configuration Tool (PCST)**, allowing video and thermal views to be observed simultaneously
- Professional **Validation Tool** to support remote validation and audit of people counting performance
- **Estate Manager™** tool to manage an estate of **Gazelle** devices via a centrally located server. This provides a unified framework for task scheduling, video file download and management, error and diagnostic reporting, device configuration and firmware upgrading
- Set of programmers' APIs, enabling users to develop their own applications
- **Harvester™** data tool to collect people counting data from **Gazelle** units to a central database. **Harvester Reporting** allows a simple set of graphical reports to be extracted from the **Harvester** Database.

Managed through a highly flexible Address Book structure, **Gazelle Estate Manager** software provides a central repository for people counter support data, allowing multi enterprise networks of people counters to be operated on a geographical, customer or site-wide basis.

It sets a new standard in enterprise-wide support tools and is designed to promote low cost of ownership.



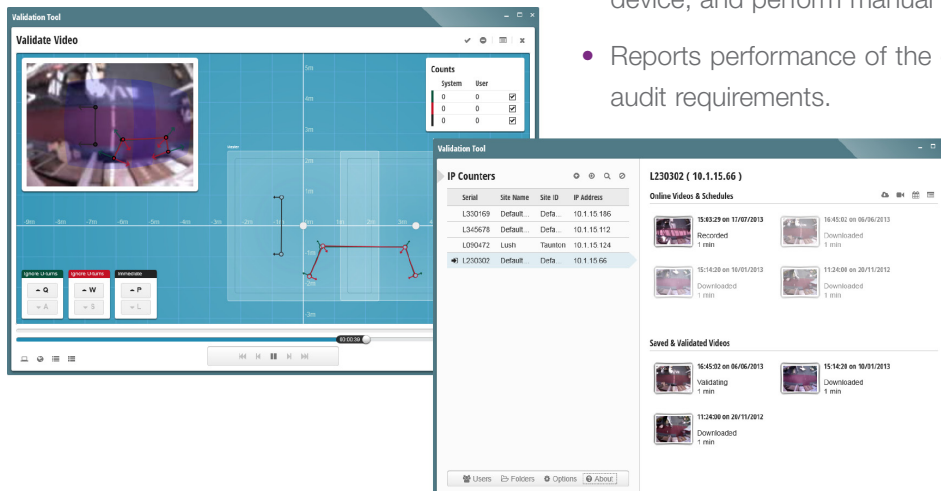
People counter set-up and configuration tool (PCST)



- Standard with each unit, as a web based or executable application
- Facilitates simple, on-site installation
- Enables remote people counter configuration, verification and fault-finding.

Audit and validation tool

- Enhances the set-up tool to provide a fully featured, professional verification tool
- Offers the capability to make scheduled recordings and play back sequences for off-line validation from the **Gazelle DualView** combined thermal and video device, and perform manual counts on sequences
- Reports performance of the counter for verification and audit requirements.



Estate Manager tool

This comprehensive tool offers:

- Efficient centralised management, configuration, audit and support of an estate of **Gazelle** people counters via Address Book
- Dashboard and Google Maps style format, showing physical location and detail of any units in error
- Ability to 'drill down' to a unit and diagnose cause of an error and implement a solution
- User-defined smart-filtering, to ensure instant population to correct groupings
- Immediate visibility of unassigned units, allowing fast configuration of newly installed devices.

Key functions include:

1. Task scheduler: schedules regular tasks like recording and download of validation video initiation
2. Video file manager: manages the download of validation video files
3. Error reporting: ability to read diagnostics from the counter network and display these as exceptions on the main **Estate Manager** dashboard
4. Device configuration: enables set-up and configuring of units via **PCST** within the **Estate Manager** framework
5. Firmware, upgrade: remotely upgrades people counter firmware to add new functionality
6. Task logging: internal audit capability to keep track of tasks carried out for each device
7. Snapshot: captures still video image from a scene. Extremely useful in the configuration, verification and audit process, it also allows comparisons between an installation scene with later snapshots, to determine if there have been changes to the physical layout of a location.



Estate Manager is hosted on a server and is accessed by a browser interface that may be used on either local or remote desktops, laptops or tablet PCs.

Gazelle Software Suite

Dynamic problem solving

Visualise an estate to prioritise support where and when it is needed.

Estate Manager
Home > Estate Manager

Connected Devices: 34

Devices in Error: 5 (21% decrease)

Tasks Completed: 85

The map shows device locations across the globe with red circles indicating error rates: 37% in the USA, 27% in Europe, and 1392 in Asia.

Group: Mereway
Home > Group: Mereway

Search: []

Buttons: Schedule Task, View on map, Edit Group Settings

Serial #	Site Name	Site ID	IP Address	Last Connected
SN10000001	Northampton	10	xx.xx.xx.xx	23/07/2013 07:08:55
SN10000002	Northampton	10	xx.xx.xx.xx	23/07/2013 10:15:30
SN10000003	Northampton	10	xx.xx.xx.xx	23/07/2013 07:21:43
SN10000004	Northampton	10	xx.xx.xx.xx	23/07/2013 11:44:08
SN10000005	Northampton	10	xx.xx.xx.xx	23/07/2013 07:50:10
SN10000006	Northampton	10	xx.xx.xx.xx	23/07/2013 05:43:31
SN10000007	Northampton	10	xx.xx.xx.xx	23/07/2013 17:41:29
SN10000008	Northampton	10	xx.xx.xx.xx	23/07/2013 09:59:53
SN10000009	Northampton	10	xx.xx.xx.xx	23/07/2013 18:19:53

Device: SN10000001
Home > Device: SN10000001

In groups: Northampton

Buttons: Schedule Task, View Settings, Launch PCST

Device Summary
Serial Number: SN10000001
Site ID: 4
Site Name: Site Name

Device Uptime

Scheduled Tasks

Time	Description
30m	Update firmware
1h,45m	Sync clock
2h	Update firmware
5h,30m	Reboot Device

Recent Activity

Time	Description
30m	User 1 logged in
1h,45m	Counter connection
2h	Update firmware
5h,30m	Reboot Device

Data Harvester Software

Data **Harvester** Software provides:

- A near real-time data collection mechanism, for use over an IP network to a server based SQL database, enabling a fast track adoption of **Gazelle** people counters
- Integration with existing data analysis and display systems
- The development of simple reporting facilities using the data within the **Harvester** SQL database.

With **Harvester** software, partners can develop their own front end/customer facing reporting structure, using the data within the **Harvester** SQL database. All counting information is encrypted and communicated over the network to an industry standard SQL database, ensuring flexible reporting and data delivery.

Harvester software provides a choice of data collection methods, allowing for differing network infrastructures:

- **Harvester Push** accepts a connection from the IP counter set at predefined intervals
- **Harvester Pull** actively polls the IP counter and pulls new data to the database.

Configurable data collection intervals are provided. Data is initially stored in the IP counters and is non-volatile i.e. is maintained if there is a loss of power or IP connection.



Gazelle Software Suite



InfraRed Integrated Systems Limited

Park Circle Tithe Barn Way Swan Valley
Northampton NN4 9BG UK

Tel: **+44 (0) 1604 594 200**

Fax: **+44 (0) 1604 594 210**

Email: **sales@irisisys.co.uk**

Web site: **www.irisisys.co.uk**

IRISYS Americas

One Glenlake Parkway Suite 700
Atlanta GA 30328 USA

Tel: **+1 678 638 6248**

Email: **sales@irisisys.net**

Web site: **www.irisisys.net**

© 2013 InfraRed Integrated Systems Limited (Irisys). No part of this publication may be reproduced without prior permission in writing from Irisys. Whilst Irisys will endeavour to ensure that any data contained in this product information is correct, Irisys do not warrant its accuracy or accept liability for any reliance on it. Irisys reserve the right to change the specification of the products and descriptions in this product information without notice. Prior to ordering products please check with Irisys for current specification details. This product may be protected by patents US5420419, US5895233. All brands and product names are acknowledged and may be trademarks or registered trademarks of their respective holders.

December 2013

IPU 40499

Issue 1
