

Title: Programming the LEMO connector for the 1523 or 1524

Created: 7 Dec 2012

Last Revised: 7 Dec 2012

Applies To: All 1523 and 1524 meters

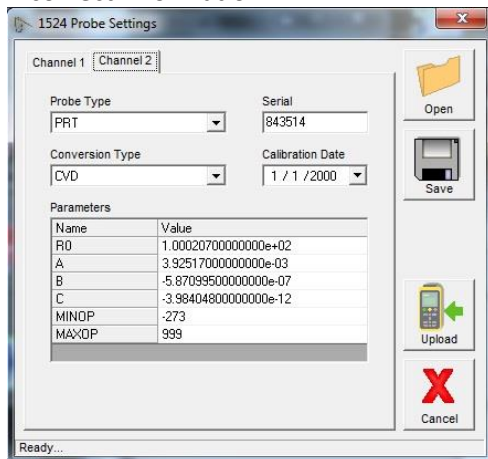
Problem Description: The probe is not programmed correctly

Resolution/Work Around: The LEMO or probe connector for the 1523/24 must be programmed via RS-232 from a computer using the 9940 IO Toolkit software.

- Connect the RS-232 cable that came with the 1523/24 (DB9 to 3.5mm mini-stereo jack) to the computer and then to the 1523/24.
- Plug in 12V DC adapter to an electrical outlet and then into the 1523/24.
- Install the 9940 IO Toolkit software from the CD provided or download from: <http://us.flukecal.com/literature/software-downloads/software/io-toolkit-v10>
- Run the 9940 software
- Select the middle icon (probe)



- Select the channel of the probe you wish to program. Then fill out the missing or incorrect information.



- After you are done, select the Upload button.
- Enter the default password 1234 or the password you have chosen and click OK.
- The software will upload the information to the LEMO connector.
- Probe is now programmed and can be used.