

DewK 1620A Temp & RH Setup with COMPASS for Pressure (or Flow) Enhanced

If the DewK is not using default settings it might not be able to communicate with COMPASS properly. Check under its menu System/COM/Serial to verify that both the Echo and Print functions are set to "OFF". If this is not done the reply that COMPASS gets will likely be different each time the read command is sent so will get bad data.

Press [Setup], <Support Device> to open the Support Device Editor.

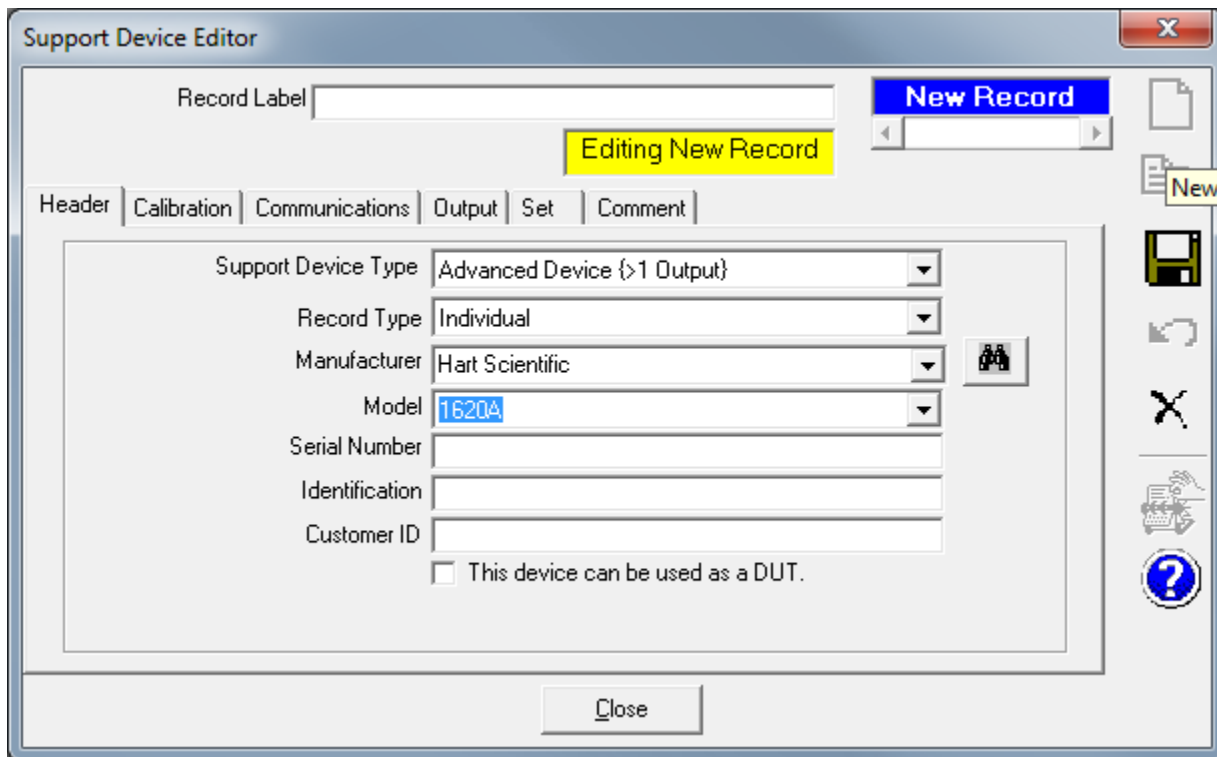
Click the blank white sheet of paper icon (at top right) to make a new item.

Choose Hart Scientific for Manufacturer and 1620A for Model. If you can't find these go to next page.

Click on the binoculars icon (Find Previous Setup).

Double-click on the matching line in the next window.

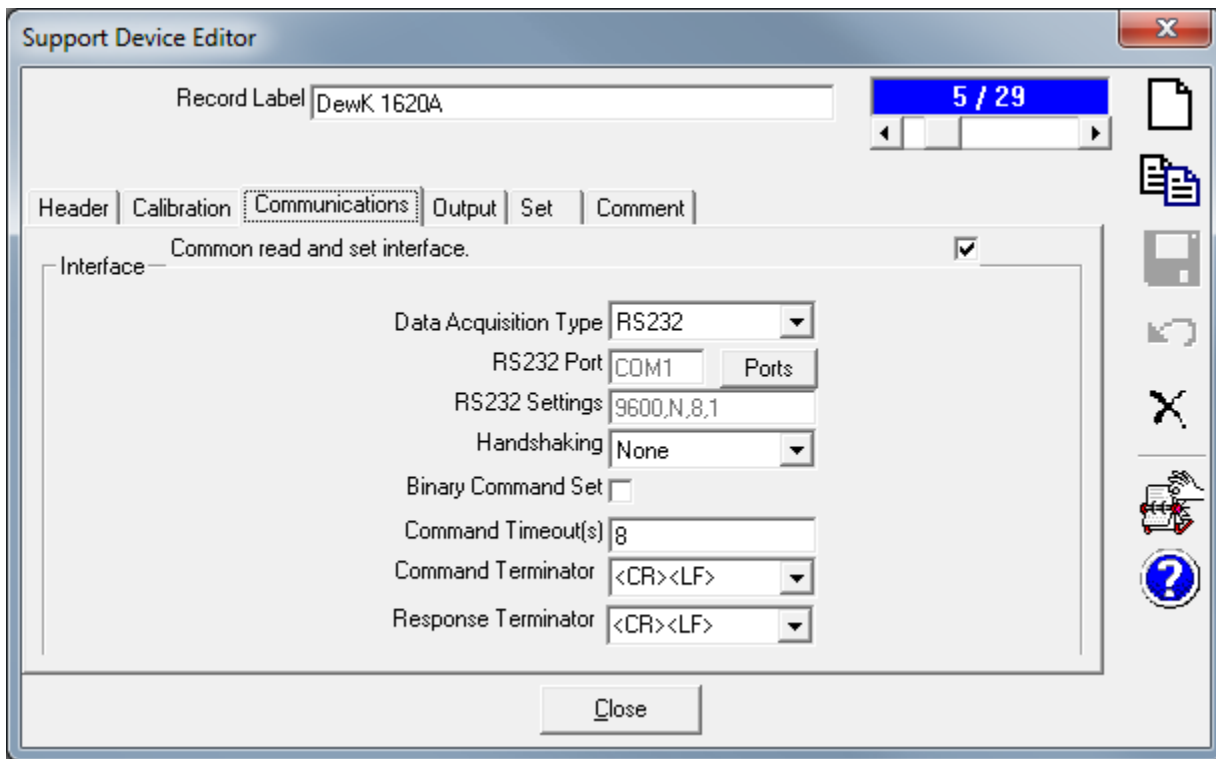
Press [OK] to acknowledge that you will have to verify the outputs and communications.



Check and edit as necessary other tabs, particularly the Communications and Output tabs.

There are two outputs; 1 for Temp, other for humidity. You can choose these when you are in the Test Editor or initializing a COMPASS test. You can set them as default devices in the [Setup, <Default Hardware Configuration> window.

The Response Terminator needs to be the default of <CR><LF>. Sometimes <CR> only is recommended on other devices, but the DewK has been shown to produce only a single response for the Temperature value with this terminator and then COMPASS does not get any further updates which will not allow a Test to complete.



Support Device Editor

Record Label 5 / 29

Header | Calibration | Communications | **Output** | Set | Comment

Final Output Labels

- 1) Humidity
- 2) Temperature

Output #1

Raw Output

Final Output

Output Relationship

Raw Output | Final Output | Tolerance

Required Raw Outputs to determine Final Output

Output Type

Output Source

Minimum

Maximum

Resolution

Raw Output to Final Output Relationship

Output Relationship

Raw Output | Final Output | Tolerance

Label: Humidity

Output Type: Humidity

Final Output: Ambient Humidity

Unit: %RH

Minimum: 0.00

Maximum: 100.00

Resolution: 0.01

OK Cancel

Output Relationship

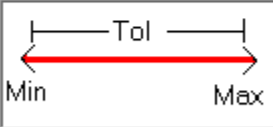
Raw Output | Final Output | Tolerance

Number of Tolerance Segments: 1

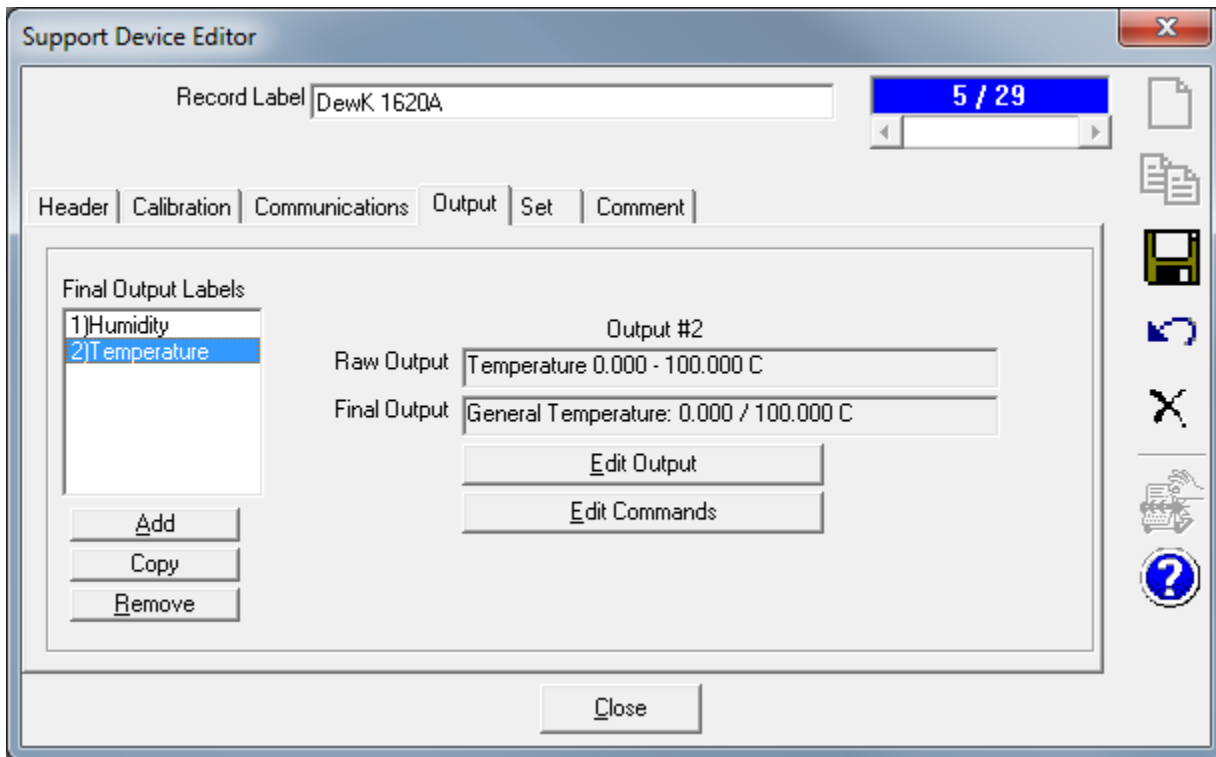
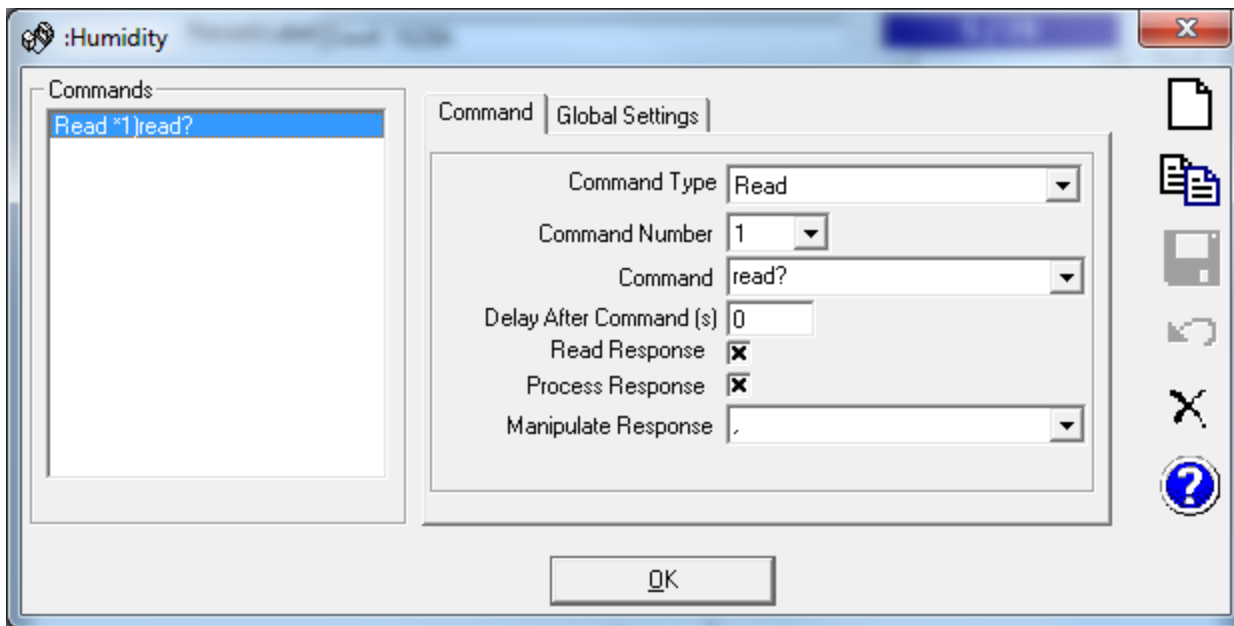
Segment Tolerance: %Span

%Span: 1.500

Tolerance Segment Definition: All Final Outputs



OK Cancel



Output Relationship [X]

Raw Output | Final Output | Tolerance

Required Raw Outputs to determine Final Output [1] ▼

Output Type: Temperature ▼ C ▼

Output Source: RS232 ▼

Minimum: 0.000

Maximum: 100.000

Resolution: 0.001 ▼

Raw Output to Final Output Relationship: Same (Raw Output = Final Output) ▼

[?] [OK] [Cancel]

Output Relationship [X]

Raw Output | Final Output | Tolerance

Label: Temperature

Output Type: Temperature ▼

Final Output: General Temperature ▼

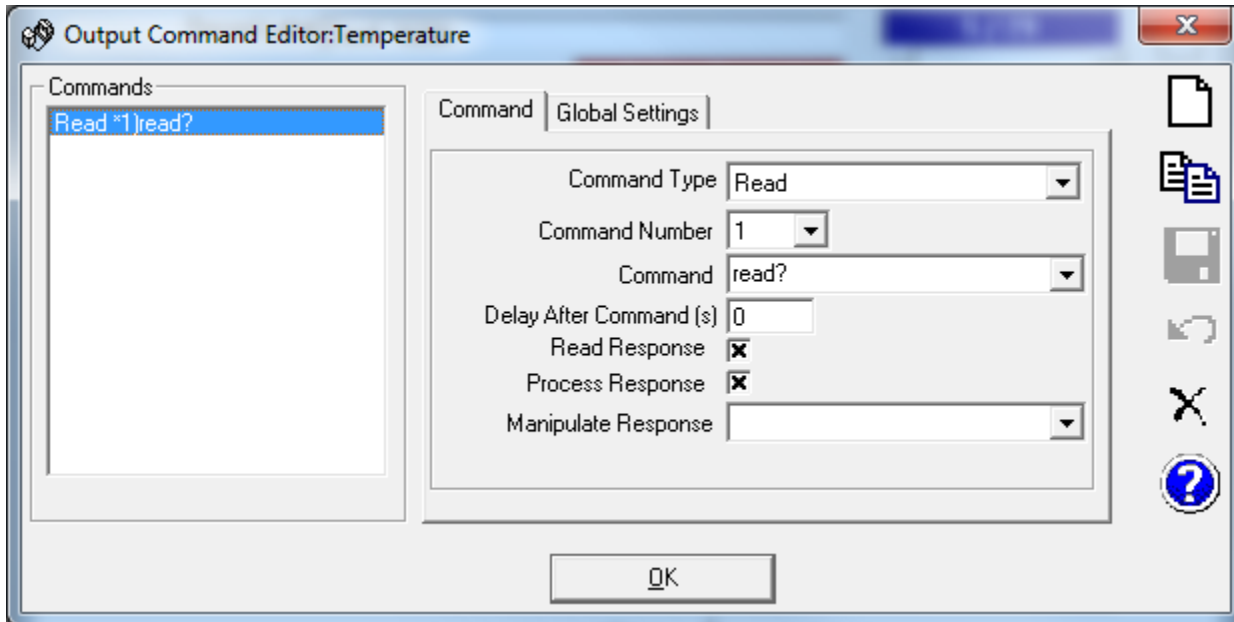
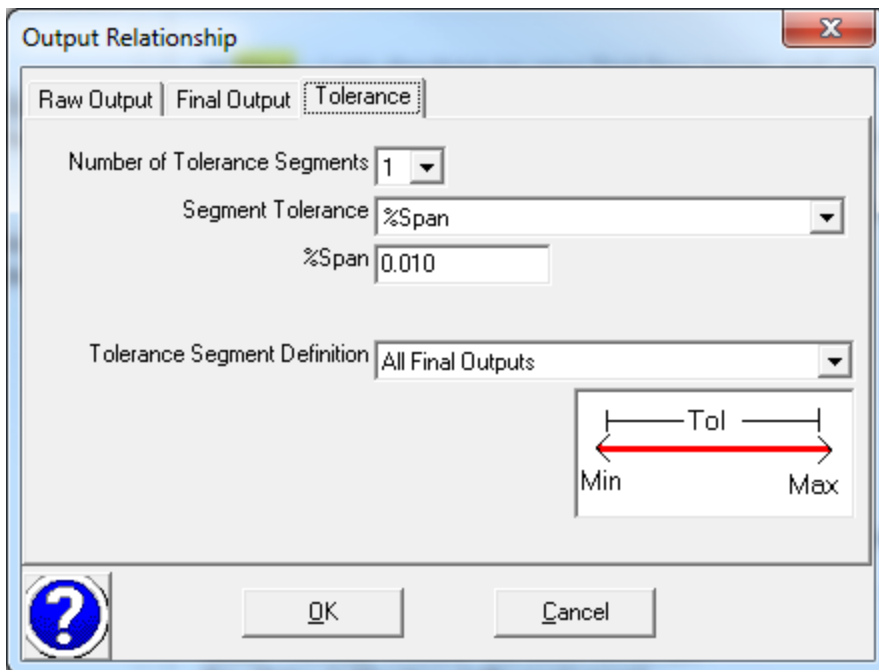
Unit: C ▼

Minimum: 0.000

Maximum: 100.000

Resolution: 0.001 ▼

[?] [OK] [Cancel]



Support Device Editor

Record Label 5 / 29

Header | Calibration | Communications | Output | **Set** | Comment

Final Set Labels

Raw Set

Final Set

Use Ready Status

Use Remote Vent

Use Remote Control Abort