



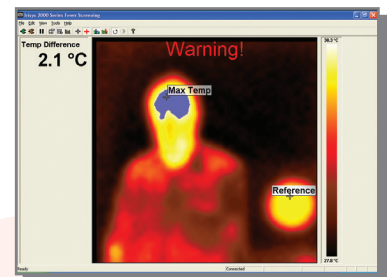
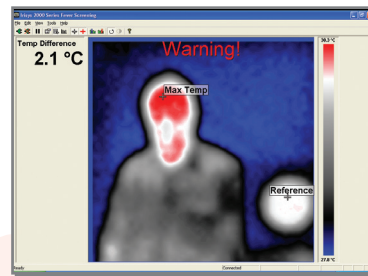
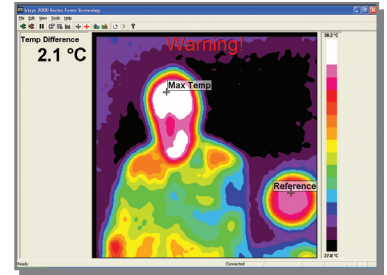
IRI 2012

FEVER SCREENING CAMERA

Irisys has introduced the ideal low cost solution for measuring human temperatures as part of a fever screening regime.

The IRI 2012 comes with a set of innovative features, making it a unique product at its price:

- Visual and audible alarm: The camera provides a visual and audible warning when people exhibiting abnormally high temperatures come into view.
- Stand alone or connect to a PC: Use either as a stand-alone camera or with a PC to get a larger display.
- High accuracy: For use with or without an external temperature reference.
- User defined temperature: User defined alarm settings.
- Easy to set up and operate: Ready to use from switch on, yet can be adjusted to suit individual requirements.
- Save images: For archive and records.
- Image Fusion: Camera function provides blending of thermal and visual images. Allows for both detection and identification of people generating an alarm.



“ Low cost fever screening solution ”

Ideal for use in:

- Airports
- Stations
- Schools
- Hospitals
- Offices
- Factories



CAMERA SETTINGS AND CONTROLS

PERFORMANCE

Field of view (FOV):	20° x 20°
Spectral Response:	8µm to 14µm
Sensitivity:	≤0.3°C @ 30°C
Detector:	47 x 47 pixel array
Frame rate:	8Hz
Focus Range:	0.5m to infinity

IMAGE STORAGE

Number:	Minimum of 1000 images on micro SD card supplied
---------	--

DISPLAY

3 1/2" colour LCD with LED Backlight. 8 colour palettes. Mixed thermal and visible images.

LASER POINTER

A built in Class 2 laser is supplied to highlight the centre of the thermal image. (Aligned at 2 metres)

Beam Divergence	<0.2mrad
Maximum Output	<1mW

MEASUREMENT

Temperature range:	-10°C to +350°C
Radiometry:	Two moveable temperature measurement cursors with temperature difference measurement.
Emissivity Correction:	User selectable 0.10 to 1.00 in steps of 0.01 with reflected ambient temperature compensation
Accuracy:	The greater of ±2°C or ±2% of reading in °C

IMAGER POWER SUPPLY

Battery:	Lithium-ion field rechargeable.
Operation time:	Up to 6 hours continuous operation
AC operation:	AC adaptor supplied
USB:	AC supply is not needed when connected via USB to a PC

MECHANICAL

Housing:	Impact Resistant Plastic with over moulded soft plastic and detachable handle
Dimensions:	130mmx95mmx90mm (excluding handle)
Weight:	0.70kg
Mounting:	Handheld & tripod mounting 1/4" BSW

SETTINGS AND CONTROLS

- Visual/audio alarm high and low
- USB connection to PC
- Image capture, time and date
- On/Off soft power control
- User selectable span & level control
- Auto adjust span and level
- 4 preset thermal / visual alignment distances
- Manual thermal / visual alignment
- Readout in °C or °F
- User selectable image integration
- User selectable emissivity setting
- User selectable reflected temperature
- Isotherms
- Text annotation
- Voice annotation
- Two moveable temperature measurement cursors
- Area analysis – 3 options
- X-Y profiles

OPTIONAL ACCESSORIES

- 12V car charger
- Light shade.

FEATURES

- Real-time image and temperature measurement display
- Visible/thermal/mixed image fusion (100%, 75%, 50%, 25%, 0%, PiP)
- Simple operation
- Multiple temperature measurement
- Image browser
- Battery Charge indicator
- Lightweight
- Laser Pointer
- Auto hot/cold seeker
- Languages
- Thermal lens focus meter.
- LED illuminator for operation in dark environments
- PC Software
- User defined alarm threshold
- User control temperature measurement adjustment
- Visual and audible alarm

IRI 2012 Includes

IR Camera, Handle, Battery, AC Adaptor, USB cable, Lanyard and lens cover tie, Quick start guide, Carrying Case, CD with user manual and software (Analysis and report writer and fever screening software).

Computer requirements (for PC software)

PC: IBM compatible PC with a minimum of: 1.6GHz processor, MS Windows XP, VISTA (not 64 bit), 256MB RAM (see Irisys website for current list of operating systems supported). Minimum graphics resolution 16 bit colour @ 1024 X 768 pixels, minimum free hard disk space requirement 10MB

PC SOFTWARE FEATURES

- Set alarm temp
- Audio Visual alarm
- Full screen image
- Temperature offset correction
- Real time thermal images (4Hz)
- Direct and Relative alarm settings

ENVIRONMENT

Temp. operating range: -5°C to +45°C
Humidity: 10% to 90% non condensing
Temp. storage range: -20°C to +60°C
CE Mark (Europe)
IP rating: IP54

InfraRed Integrated Systems Limited

Park Circle Tithe Barn Way Swan Valley Northampton NN4 9BG UK

Tel: **+44 (0) 1604 594 200**

Fax: **+44 (0) 1604 594 210**

Email: **sales@irisys.co.uk**

Web site: **www.irisys.co.uk**