

# Irisys People Counters Technical Bulletin



17<sup>th</sup> June 2013.

Issue: **03**

## Introduction

Welcome to the third technical bulletin.

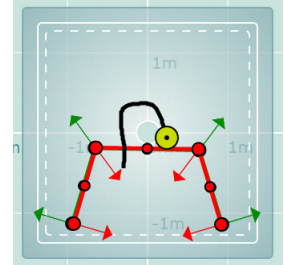


### Installation Tips – Advanced Logic

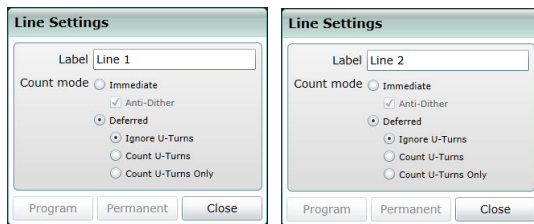
Introduced in a recent firmware update to the 3000 series counters, was the ability to do advanced logistical functions using multiple count lines. To our knowledge most customers have not delved too far in to the realms of these functions so I thought I would use this technical bulletin to show one of the things that can be done with the advanced logic functionality.

### Counting U-Turns Separately

The counting of people who come in through a door, but then turn around and go out again, is a common request from retail store managers. This could be because of: long queues, a busy store, no apparent staff, etc., but each time it happens the result is a missed sales opportunity for the retailer. Having a separate count of this event enables managers to gauge the extent of the problem and then put processes in place to help prevent it happening in future (more staff at busy periods, 'meet and greet' staff at the door, etc.).

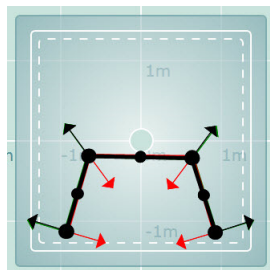
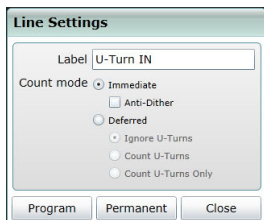
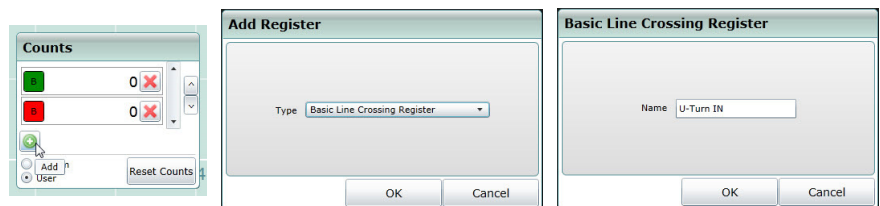


This count can be obtained using a Sequential Line Crossing Register...



Firstly, lines configured for the accustomed IN and OUT counts, will usually be configured with the count mode; 'Deferred with Ignore U-turns'. This is recommended to help prevent people who stand on, or by, the count line(s) from generating extra unwanted counts. A Sequential Line Crossing Register requires that any lines associated with it are configured with the 'Immediate' count mode; therefore we must add two extra, separate, count lines for use with this register.

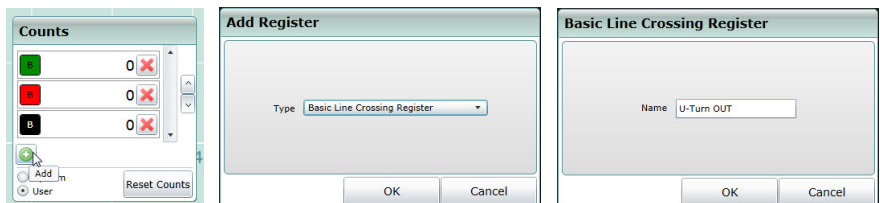
1. First, click the 'Add' button, and choose 'Basic Line Crossing Register'. This will provide an 'IN' count, so enter a relevant label, such as "U-Turn IN", for example

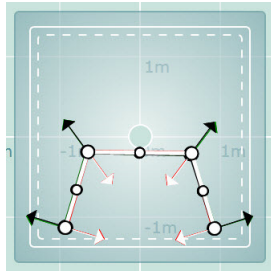
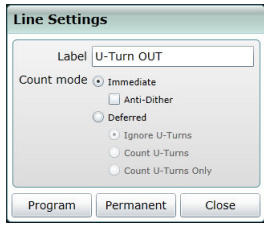


2. Now right click on the line, select 'Settings', and then choose the 'Immediate' (with 'Anti-Dither' sub option disabled) count mode

3. Then position the count line in the same place as the first, original, 'IN' line, ensuring that the direction arrows are the correct way around

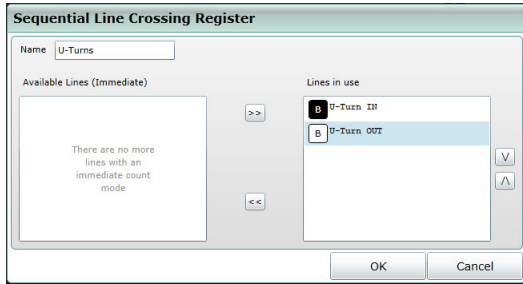
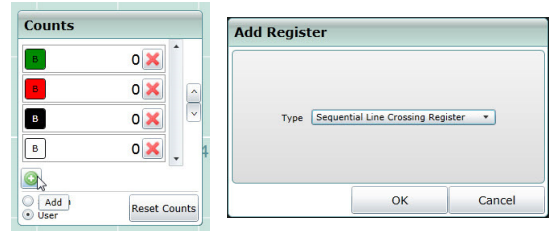
4. Next, click the 'Add' button once more, add another basic line crossing register, and assign a relevant "U-Turn OUT" label





5. Again, configure this line with immediate count mode, and this time position it in the same place, and direction, as the original 'OUT' line

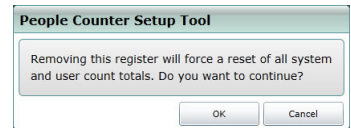
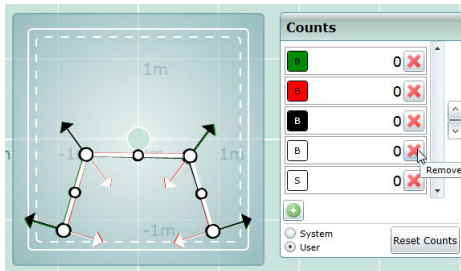
6. Next, click the 'Add' button again, and this time choose the 'Sequential Line Crossing Register' option



7. Give the Sequential Line Crossing Register a unique name and then move the two U-Turns lines from the 'Available...' to the '...In use' columns. Make sure the 'IN' line as at the top (crossed first) - use the up and down arrows at the side to swap them around if necessary

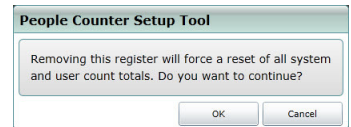
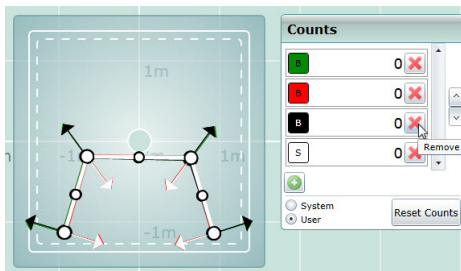
You will now have a total of four count lines and five registers. The two individual registers that were each added automatically along with the two newly added Basic count Lines are not usually required, so it is a good idea to delete them to save logging space in memory.

8. To Delete individual registers click the corresponding red 'X' next to it and acknowledge the totals reset warning message



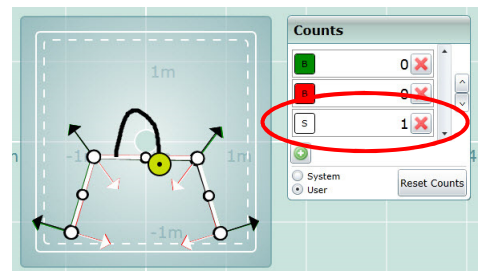
Ensure that the counters 'Head' firmware (or 'DSP' build version) is at version 42.4.1.486 or above to be able to delete registers correctly (see note in Technical Bulletin 02).

9. Do this for the second redundant registers



Notice that only the register totals are deleted - the lines themselves are not deleted and will continue to contribute to the sequential register.

10. Now you're done. Anyone who walks IN and then turns round and walks OUT again will be counted by the third register



**Unsubscribe Information:**  
 You have been sent this technical bulletin because you have previously contacted Irisys for technical support, or have been identified as a technical contact within your company. If you do not wish to receive this technical bulletin in future then please send an email to [counting.support@irisys.co.uk](mailto:counting.support@irisys.co.uk) and we will remove you from the email list.