

Controls and Menu

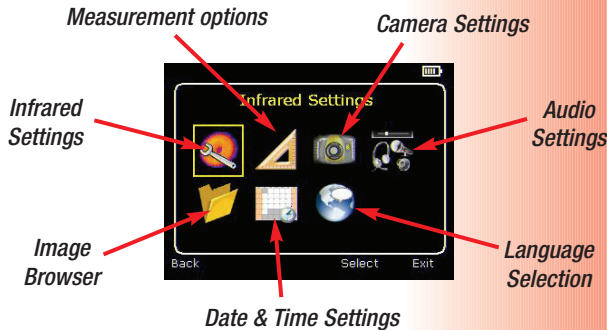


Hotkey Controls **HK1** to **HK4**

The hotkeys functions are indicated by the icons or text displayed on the screen above them. They are to be used together with the **navigation buttons** and the **centre toggle button**.

For full details on Hotkey functions and Menu functions see the User Manual.

Menu – Selected by **HK4**. Use **navigation buttons** to navigate around the menu and **HK3** to select the menu option.



InfraRed Integrated Systems Limited

Park Circle Tithe Barn Way Swan Valley Northampton NN4 9BG UK

Tel: +44 (0) 1604 594 200

Fax: +44 (0) 1604 594 210

Email: sales@irisys.co.uk

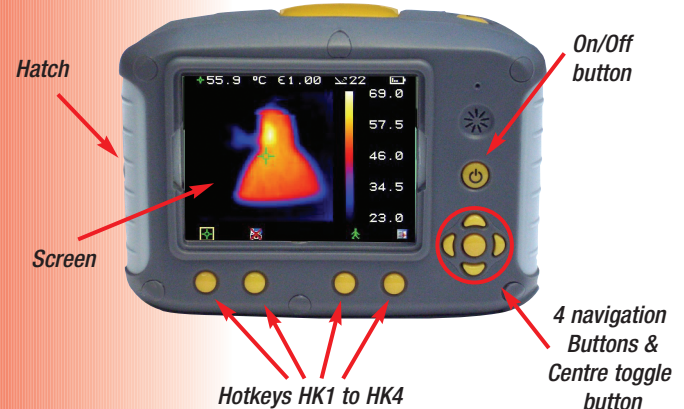
Web site: www.irisys.co.uk

IPU 40212 Jan 2009



IRI 2010 Quick Start Guide

Getting Started



1. Unpack camera
2. Charge battery if required. The charging point is located behind the **hatch** on the side. A full charge should last approximately 6 hours.
3. Press **On/Off button** to switch on Camera.
4. Remove lens cap and a thermal image of the scene should appear on the **screen**.

For full details see User Manual.



5. Focus an object by rotating the lens. A focus bar appears on the screen showing the approximate distance".
6. Press the **save button** once to save an image.
7. To view saved images access the menu by **HK4** and the image browser by the **navigation buttons** (see Controls and Menu overleaf).
8. Return to a live image by means of **HK3**.
9. To download saved images to the PC for analysis and report writing see the User Manual.

Do not use the Windows wizard to download images. Use Windows Explorer.

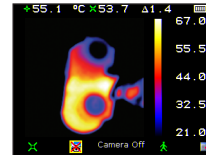
10. The **laser button** will illuminate the centre point of the imaged area when pressed.



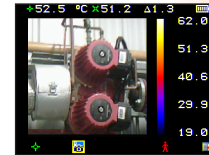
Warning: Class 2 laser - Do not stare into the beam or shine the beam at anyone's eyes.

Viewing

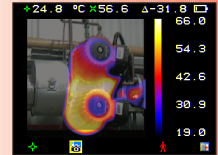
The camera can show a thermal image or a visible image of the scene, or a mixed blend of both.



a) 100% Thermal only



b) 100% Visible only.



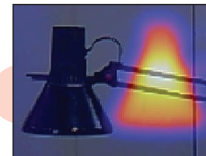
c) 50% Thermal and 50% Visible.

Thermal and Visible image blending

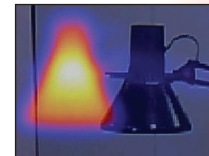
1. Select "visible" icon using **HK2**, and turn on with centre toggle button.
2. Use the **4 navigation buttons** to blend the thermal and visible images.

Alignment

1. Press **HK1** to toggle to the alignment icon.
2. Use the **4 navigation buttons** to align the thermal and visible images or press the centre toggle button to select alignment at 2m. Pressing it again cycles thru 4m, 0.5m and 1m.



Align right



Align left



Aligned image

© 2009 InfraRed Integrated Systems Limited (Irisys). No part of this publication may be reproduced without prior permission in writing from Irisys. Whilst Irisys will endeavor to ensure that any data contained in this product information is correct, Irisys do not warrant its accuracy or accept liability for any reliance on it. Irisys reserve the right to change the specification of the products and descriptions in this publication without notice. Prior to ordering products please check with Irisys for current specification details. All brands and product names are acknowledged and may be trademarks or registered trademarks of their respective holders.