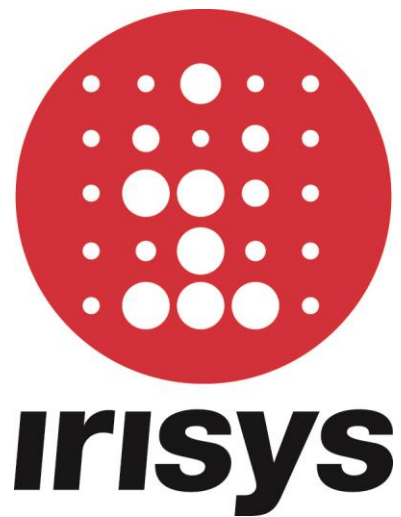


TB 08 - Page 1 of 2

Irisys People Counters

Technical Bulletin



30th September 2014.

Issue: **08**

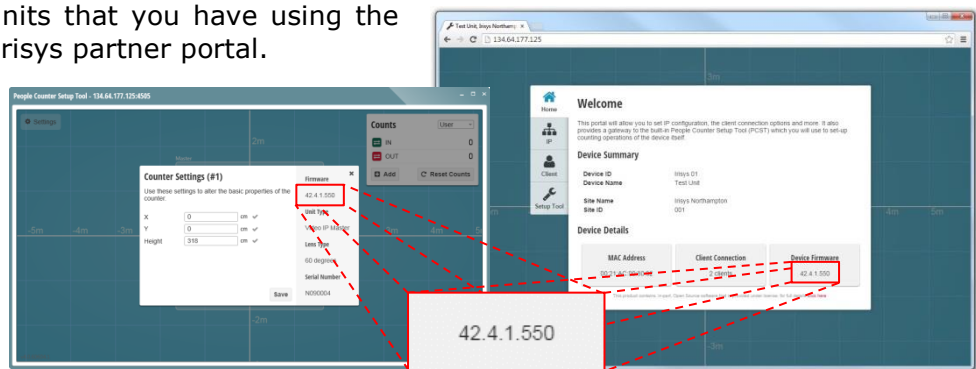
Introduction

Welcome to the eighth technical bulletin which is essentially a catch up and reminder of a few recent updates, along with some new ones coming soon... Mike.

Irisys Gazelle Firmware Update

In July, we released new firmware for **Gazelle** units which we recommend everyone updates to. This fixes an IP issue which has the potential to leave a **Gazelle** unit temporarily in a non-working state. The update also adds additional functionality, such as the tamper detect feature. Our factory will soon be shipping units with the latest firmware, but in the meantime you can update any **Gazelle** units that you have using the update available from the Irisys partner portal.

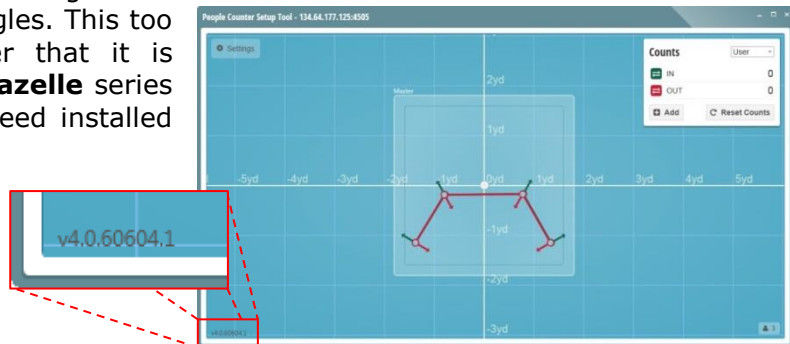
The firmware version is always shown in the unit's counter settings or on the main 'Welcome' page when connected via web browser. The latest version is 42.4.1.550, replacing 42.4.1.538.



Irisys PCST Software Update

Also in July, to go with the **Gazelle** firmware update, we released a new version of the PCST setup software. This allows you to configure the new features made available in the firmware update as well as fixing a few minor niggles. This too is a recommended update. Remember that it is compatible with both 3000 series and **Gazelle** series units, so is the only one version you need installed on your laptop.

The version is always shown in the bottom left corner of the main exe window. 4.0.60604.1 is the latest version (download from the portal).



Irisys Bluetooth Setup Module

For those that may not have seen one yet, the IWC3095 Bluetooth setup module is an alternative to the wired setup modules and cables for local configuration of counters. It can be used with both the older 3000 series units and with the newer **Gazelle** units, if you remove the small plastic 'break-out' section next to the serial cable connection, in order to expose the 10 pin connector.



As it's a Bluetooth adapter connected to the counter; there are no drivers required on your laptop. Just pair it as a standard Bluetooth serial device and you'll see an additional COM port available when you run the PCST software. More details are available on the Irisys partner portal (under accessories). Contact your sales representative if you need an updated quotation.

TB 08 - Page 2 of 2



Windows Support

Just a quick reminder that in line with Microsoft's own product support cycles, we will be removing support for Windows Server 2003 next July.

Unfortunately, we have to stop supporting Windows Server 2003 because our IT policies (that are in place to protect against any vulnerabilities that might be discovered in the future) which mean we cannot run PCs with unsupported operating systems.

Note also, for those still using Windows XP, support for this ended earlier this year, on 8th April.

It is strongly recommended that any PCs running unsupported operating systems are updated as soon as possible and that plans are put into place to update any 2003 server machines before they too become unsupported. A non-exhaustive list of OS support end dates is shown below.

Products Released	Lifecycle Start Date	Mainstream Support End Date	Extended Support End Date
Windows XP	24/04/2005	14/04/2009	08/04/2014
Windows Server 2003	30/03/2005	13/07/2010	14/07/2015
Windows Server 2008	06/05/2008	13/01/2015	14/01/2020
Windows 7	22/10/2009	13/01/2015	14/01/2020
Windows Server 2012	30/10/2012	09/01/2018	10/01/2023
Windows 8	30/10/2012	09/01/2018	10/01/2023

For more information about your particular operating system, go to www.microsoft.com and search for "product lifecycle database".



Harvester Backup

One last reminder to all software users, but particularly Irisys Harvester software users. Please remember to back up your count data regularly!

We've recently had a user report a hard drive crash and they had never, ever, performed a backup. They lost 3 years' worth of count data - so be warned! It only takes a few minutes to perform a backup in Harvester; just go into the 'Database' from the main Harvester Control Application, and choose the 'Backup' option.



Upcoming Developments

To finish this bulletin, I also thought it might be a good idea to let you know of a few new features which are coming soon, in order to whet your appetites and allow you to prepare for bids and customer requirements in advance:

- HTTPS support - Following a number of customer requests we will soon be adding HTTPS capability to the **Gazelle** counters. This will be configured using an updated PCST, and will secure all communications between the web browser and the device. By default, HTTPS will be disabled with no encryption (web traffic on port 80), but when enabled, all web traffic will be forced to use its HTTPS counterpart, and attempting to navigate to port 80 will result in a redirect. Only self-certification will be supported at this time.
- Hostname support - **Gazelle** units will soon be addressable via either IP address or a local hostname if required, again configured using an updated PCST. Note this is not a fully qualified, internet addressable, domain name.
- Validation Tool improvements - the next version of the Validation Tool software will include; Live Video View, count increment bookmarks, the ability to edit the working folder, menu item selection improvements as well as the removal of the annoying 'Connection Paused' message when other software connects into a device.

Everything mentioned above has come from customer requests, so please keep them coming in!

Unsubscribe Information:

You have been sent this technical bulletin because you have previously contacted Irisys for technical support, or have been identified as a technical contact within your company. If you do not wish to receive this technical bulletin in future then please send an email to counting.support@irisys.co.uk and we will remove you from the email list.