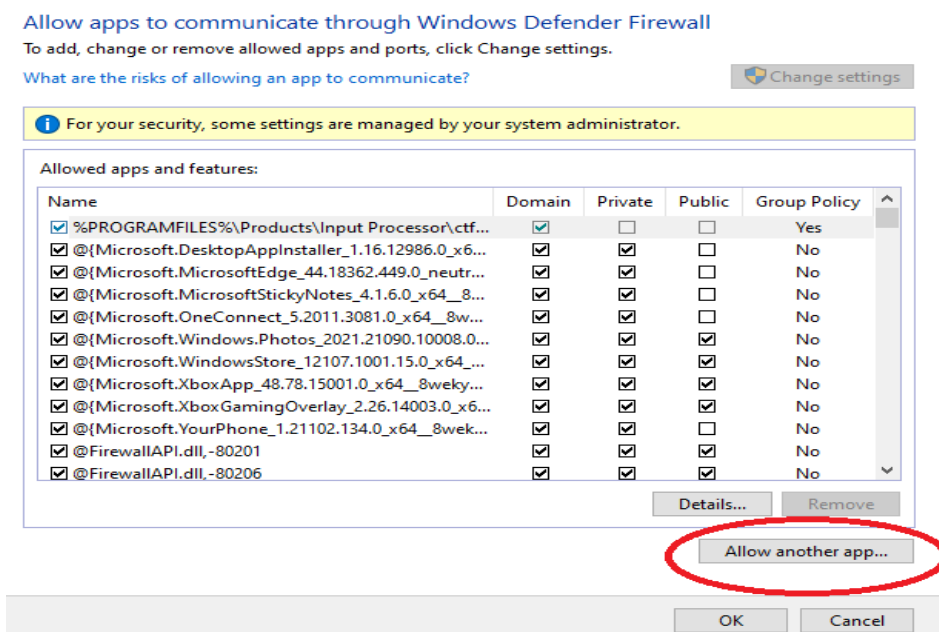


The scanners firmware update

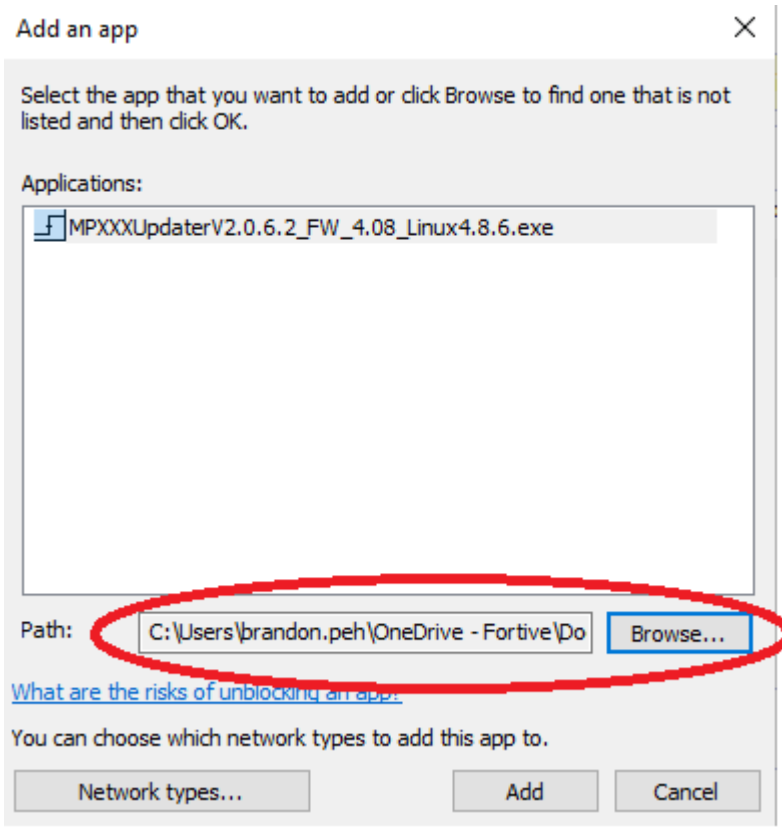
1. Unzip the zip file “MPXXXUpdater....Linux4.8.6.zip” into a new folder within your computer.
2. After unzipping the file, you will see an executable file name “MPXXXUpdater....Linux4.8.6.exe”
3. Go to your Window firewall setting and click on the red circle “Allow an app or feature.... Firewall”.



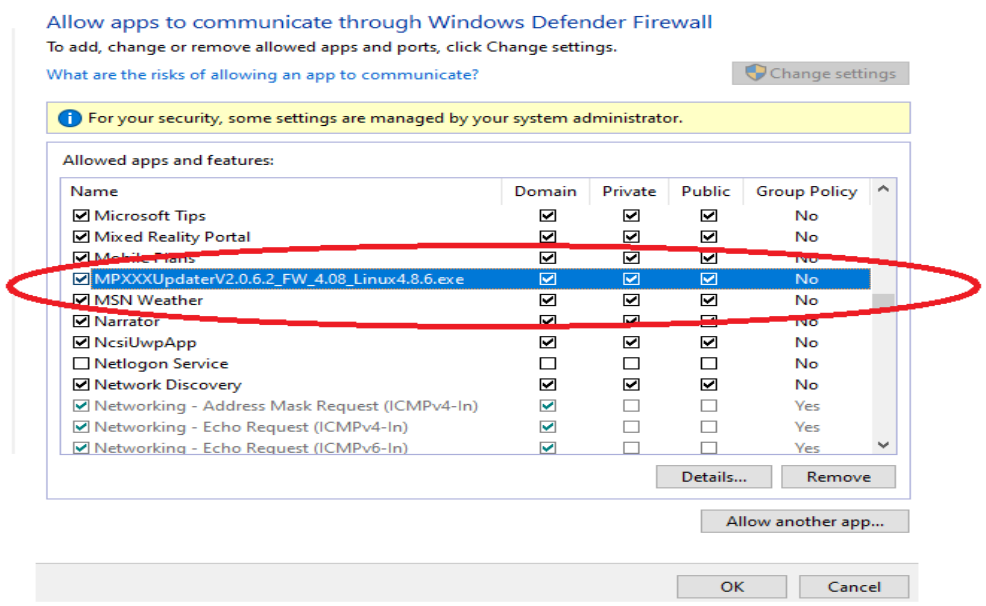
4. You will come to a new window below. (Please ensure you have an admin credential to make changes on your computer) – Mandatory in order to continue the below process.



5. Select and click on "Allow another app".
6. You will see the new window below, browse to the location where you have saved the executable file "MPXXXUpdater...Linux4.8.6.exe" and select the file. After that, click "Add" **Note: You will need Admin rights to reach this step.**

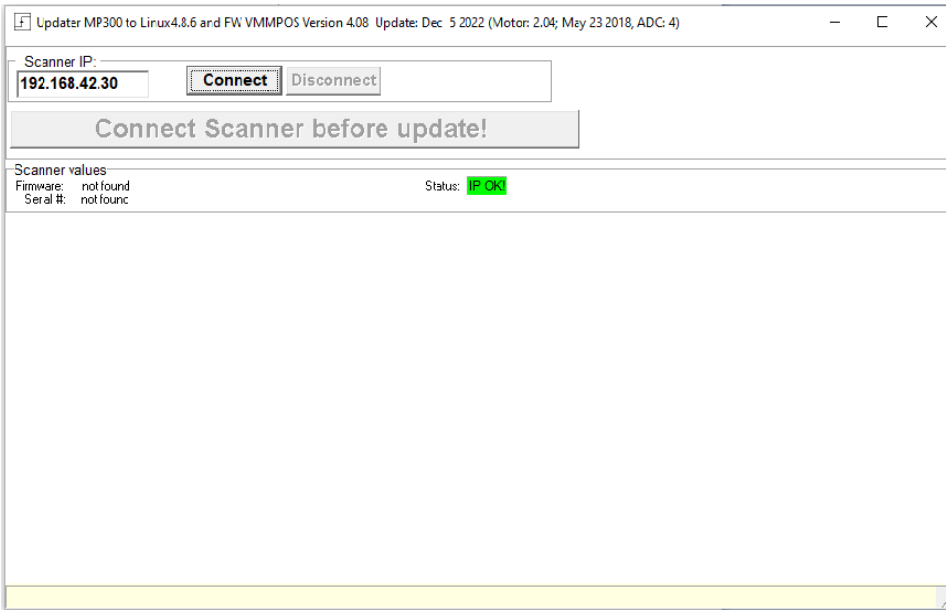


7. Next you will come back to the following window, and please check on the boxes as shown on the screenshot below.



8. Close all the windows, and go back to the location where you have stored and saved the executable file "MPXXXUpdater....Linux4.8.6.exe". Double-click on the file.

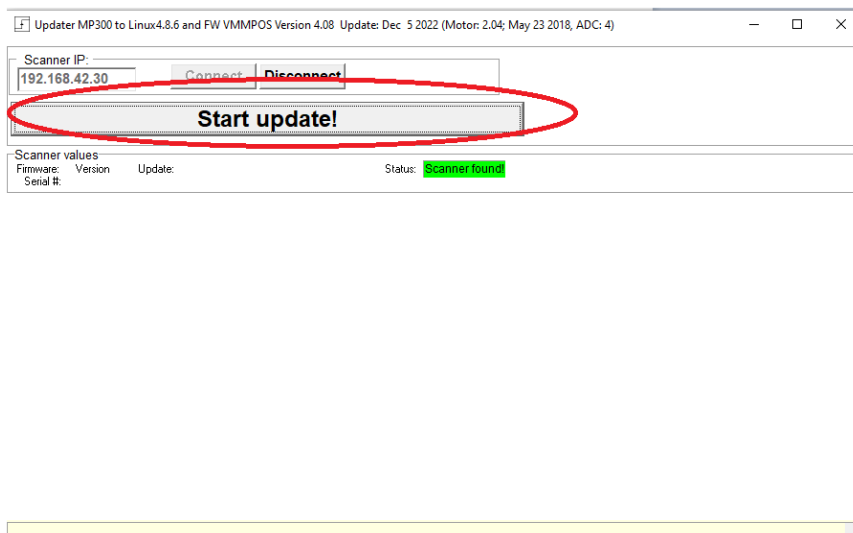
9. Once you have done that, you should be greeted with a new window as shown below.



10. Connect the line scanner to the computer and input the IP address for the scanner into the window as shown above.

11. If you have achieved a proper connection with the line scanner, you will observe the "green" status as "IP OK" shown on the screenshot. Otherwise, please check your connections and IP addresses (PC and Line scanner).

12. Once you have achieved step 11, please hit "Connect". You will be prompted by a small caution window about the firewall. Click ok if you have done steps 1 -7 above. After that, you will be greeted with the window as shown below.



13. Click "Start Update".
14. Updating process will now kick in. The entire process will take about 5 to 10 mins. During this, there will be occasions where the line scanner will reboot itself and you can observe the progress on the progress bar.
15. You will be prompted once the scanner has completed its update.

If you have any questions, please feel free to contact our technical support desk thru Techsupport@flukeprocessinstruments.com.