

Fluke Calibration 2700G (or 700G) Setup Information in COMPASS for Calibration software for use as reference device and information to start a manual test to log data

Support Device Editor

Record Label: 2700G

6 / 56

Header | Calibration | Communications | Output | Comment

Support Device Type: Simple Device

Use Device As: General Pressure

Manufacturer: Fluke Calibration

Model: 2700G

Serial Number: 123456

Identification:

Customer ID:

Close

Support Device Editor

Record Label: 2700G

6 / 56

Header | Calibration | Communications | Output | Comment

Interface

Data Acquisition Type: RS232

RS232 Port: COM1

RS232 Settings: 9600,N,8,1

Handshaking: None

Binary Command Set:

Command Timeout(s): 8

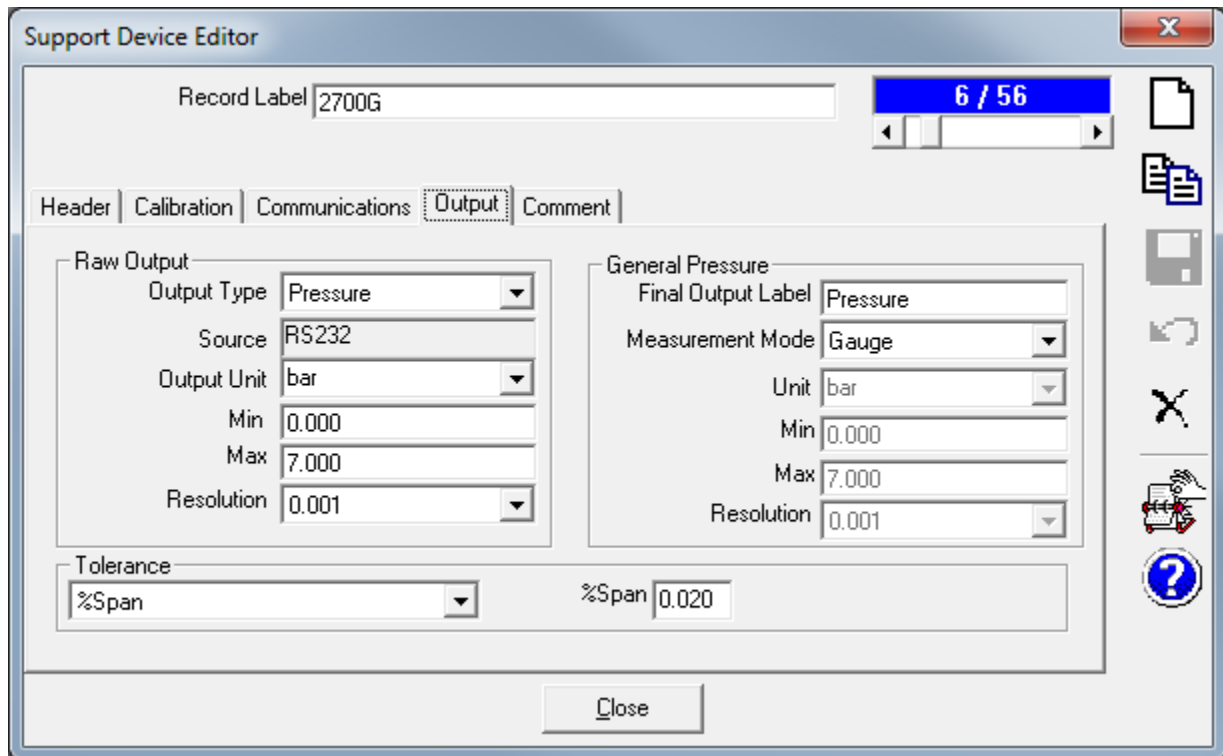
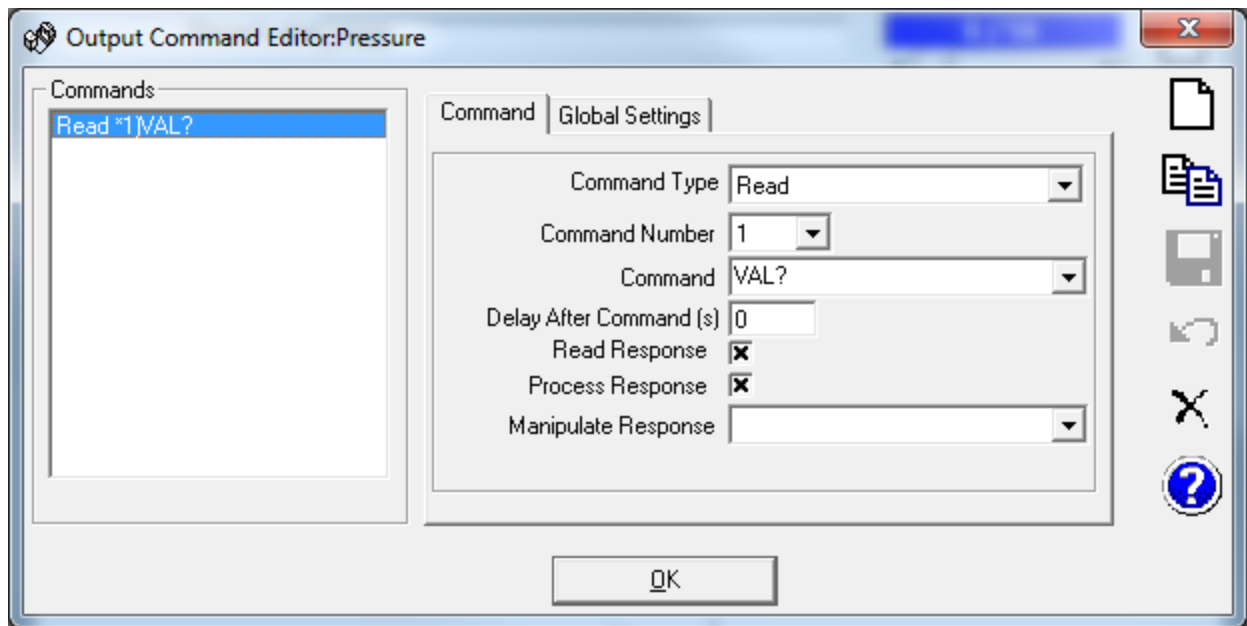
Command Terminator: <CR><LF>

Response Terminator: <CR><LF>

Edit Commands

Close

<CR> only with COMPASS v5,
no <LF>



[Run], <Run Manual Test>

Run Manual Test (Hardware Setup)

Select Units of Measure
The unit lists below define the units of measure to use when logging outputs to the data file. The selections also represent the default display unit of devices that output the corresponding quantity. Select the desired units and press [Next].

Test Pressure Unit

Timed Macro

Time Interval(ms)

No DUT selected to just log data from 2700G

Run Manual Test (Hardware Setup)

Select DUT
Add DUTs by double clicking the desired DUTs in the list. Use the [Remove] button to remove DUTs from the support list. The specific setup of DUTs is handled in a later step.

Label	Manufacturer	Model
100 psi 0 to 24 V abs mode	Rosemount	3051
220, 4 outputs	Vaisala	220
220, 4 outputs	Vaisala	220
220, 4 outputs	Vaisala	220
220, 4 outputs	Vaisala	220
2700G	Fluke Calibration	2700G

Run Manual Test (Hardware Setup)

Test Hardware Configuration

Ambient Pressure

Ambient Temperature

Ambient Humidity

Reference Pressure

Test Pressure Control

Multiplexer

Valve Driver

Run Manual Test (Hardware Setup)

Configure Device (1 / 1) 2700G

Manufacturer Customer ID

Model [RS232 Settings](#)

Serial Number Parameter ID

Identification

Reference Pressure Output Label: Pressure

[Customize Output](#)

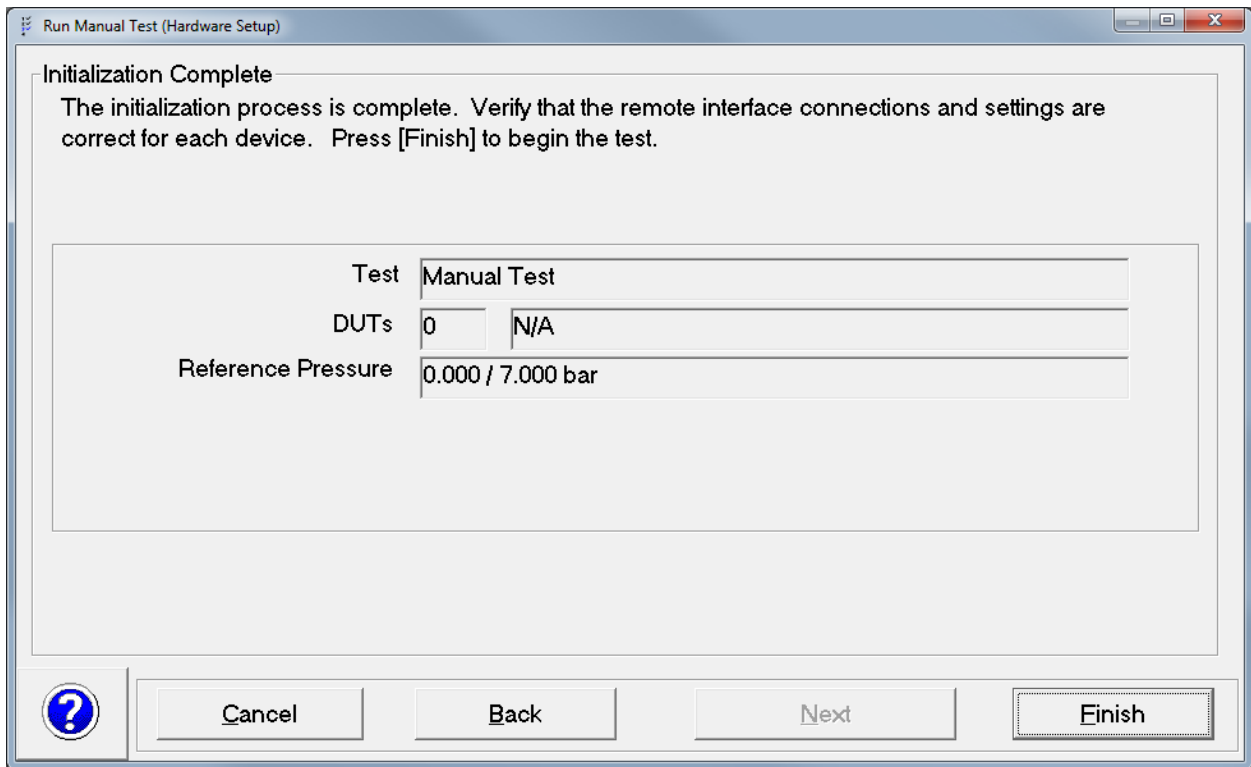
Min (bar) Head Height cm

Max (bar) Medium

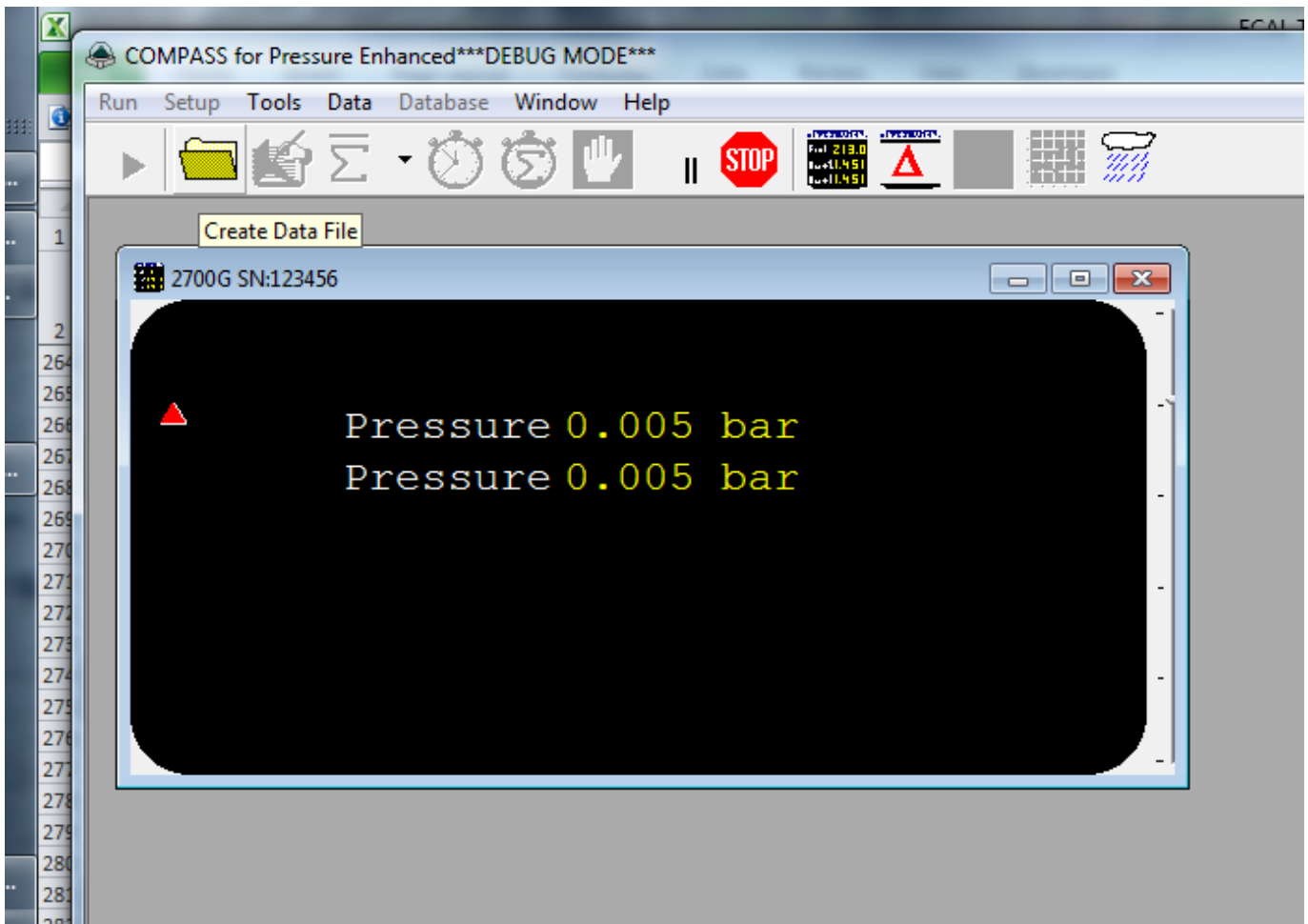
Measurement Mode

Raw Output Type

Pressure (bar)



When test is running press "Create Data File Icon" to open a data file



Press “Take Points at Timed Interval” to log points

