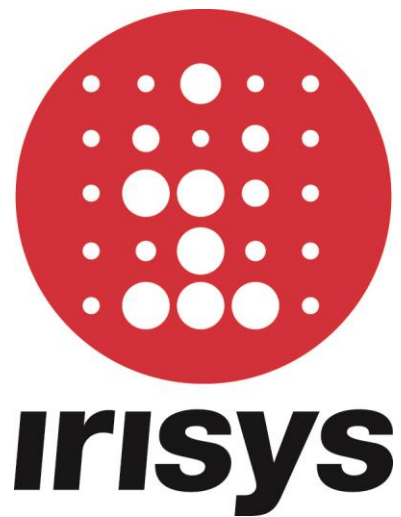


# TB 06 - Page 1 of 2

## Irisys People Counters

### Technical Bulletin



27<sup>th</sup> May 2014.

Issue: **06**

#### Introduction

Welcome to the sixth technical bulletin, if you're missing any previous bulletins they are all available from the Irisys Partner Portal as usual. Mike.



#### Irisys Gazelle™ Units Up and Running!

The biggest change for Irisys at the beginning of this year was the launch of the **Gazelle** series of people counter units. Hopefully you're already working with **Gazelle** by now, but if not; they are a completely new design and new form factor, which has on ceiling (bulkhead) or recess mounting options. In order to make the Irisys unit more your own, you can now more easily spray the outside cover or have your own logos or complete covers produced which clip on to the available mounting points on the main core product.

Importantly, **Gazelle** units are now fully 802.3af PoE compliant in order to take advantage of the ever increasing number of PoE switches now routinely being installed throughout the world. This eases integration and lowers overall cost. For when PoE is not available you can use either, a third party PoE injector, or a standard desktop power supply (12 - 28V DC) as with previous counter models.

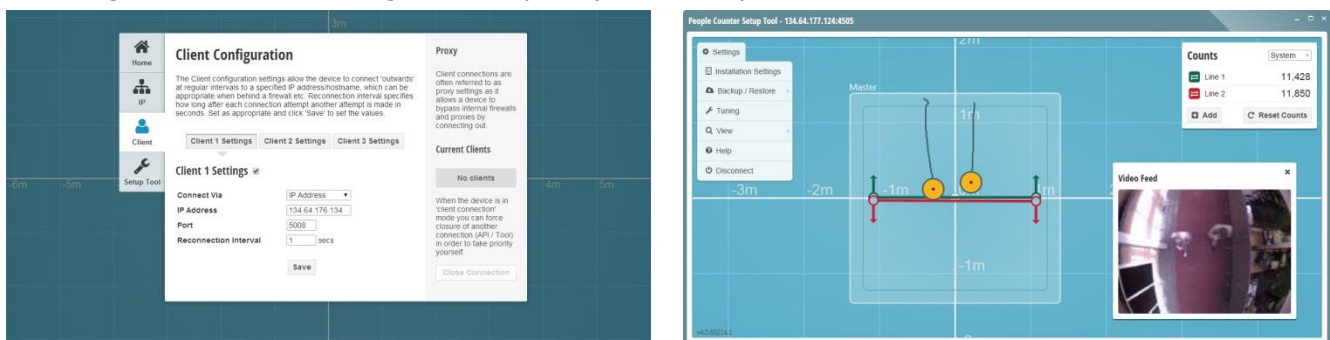
**Gazelle** units are based on a Linux platform and will support multiple simultaneous IP connections for setup, data extraction and estate management.

For those of you wanting to integrate with other systems, the **Gazelle** IP units also come with two on-board relay outputs and two on-board relay inputs as well.

If you were committed to working with the previous 3000 series units, be assured that **Gazelle** units are compatible with any existing data collection software that you may already have, with little, or no, re-compiling necessary.

#### **NEW Irisys PCST (People Counter Setup Tool) Software Now Available!**

**Gazelle** also comes with an updated version of PCST which is more streamlined and therefore easier to use for someone new to Irisys, and slicker to use for seasoned professionals who just want to get on with the configuration, quickly and easily:



This new version of PCST works with new **Gazelle** people counter units but is also backwardly compatible with previous generation 3000 series units too. PCST is available from the partner portal now.

You can sign up at <http://partnerportal.irisys.co.uk/register> if you don't already have access.

© 2014 InfraRed Integrated Systems Limited

No part of this publication may be reproduced without prior permission in writing from InfraRed Integrated Systems Limited. This document gives only a general description of the products and except where expressly provided otherwise shall form no part of any contract. From time to time changes may be made in the products.

Telephone: +44(0)1604 594200 Fax: +44(0)1604 594210 e-mail: [support@irisys.co.uk](mailto:support@irisys.co.uk) web: [www.irisys.co.uk](http://www.irisys.co.uk)

# TB 06 - Page 2 of 2



## Irisys People Counter Product Differences

For those who have not yet made the move over to **Gazelle** units, I thought it would be a good idea to list the main differences between them and the previous 3000 series units:

	IRC3010	IRC3020	IRC3030	<b>Gazelle</b>
Unit Type	IP	2x Relay	IP	IP and 2x Relays
Setup	IP or serial	Serial only	IP or serial	IP or serial
Inputs	None - Requires additional CAN I/O module			Includes 2 relay inputs
Power	12-28V DC	12-28V DC	12-28V DC	12-28V DC
	or Irisys power injector		or Irisys power Injector	or Full PoE support
Simultaneous Connections	1 IP or 1 serial	1 serial	1 IP or 1 serial	Up to 4 IP and 1 serial
Technology	Thermal Only	Thermal Only	Thermal with Video view (Dualview)	Available in both Thermal and Dualview variants

Because **Gazelle** units have both relays and an IP connection, they make it easy for customers currently utilising an onsite data logger to move over to the IP benefits of remote setup and management. This is because you don't have to decide on IP or relay versions – the same unit can use both output types at exactly the same time if you want to. A **Gazelle** unit can therefore be utilised in exactly the same way as an existing relay unit – both connectively and functionally – and your data logger unit won't see any difference in the relay-pulsed data that it receives. You can even set it up over a serial connection if you want to, just like with an IRC3020 relay only unit. Then, at any point in the future, you can connect the unit to the internet and start using the remote support options, whenever you wish, whilst still utilising the **Gazelle** relay outputs in to your data logger.

Because each **Gazelle** also supports up to four simultaneous IP connections it also brings benefits to existing 3000 series IP enabled counter users. The four available connections now mean that you can configure the counter in PCST, pull data, and schedule Validation recording sessions, all at the same time. On IRC3010 and IRC3030 units you have to do one thing at a time.



## Latest People Counter SetupTool/Firmware/API Versions

Just as a reminder, all the latest version of Irisys software and firmware are listed below. If you need an update for anything, they're all available on the partner portal as usual.

<b>People Counter Setup Tool (PCST) (SW) (Gazelle &amp; 3000 Series)</b>	* <b>4.0.60214.1</b>
<b>People Counter Setup Tool (PCST) (SW) (3000 series only)</b>	<b>3.0.41019.1</b>
<b>Validation Tool (SW) (Gazelle &amp; 3000 Series)</b>	* <b>4.0.60121.1</b>
<b>Validation Tool (SW) (3000 series only)</b>	<b>3.1.41129.1</b>
<b>Harvester (SW) (Gazelle &amp; 3000 Series)</b>	<b>1.3.41207</b>
<b>Harvester Reporting (SW) (Gazelle &amp; 3000 Series)</b>	<b>1.3.41207</b>
<b>Irisys USB to serial Adapter drivers</b>	* <b>2.08.30</b>
<b>.Net API</b>	<b>3.0.40504.01</b>
<b>Win32 API</b>	<b>3.0.40504.01</b>
<b>Linux API</b>	<b>3.0.40504.01</b>
<b>Java API</b>	* <b>3.0.50518.01</b>
<b>Gazelle (FW)</b>	* <b>42.4.1.538</b>
<b>Counter Head, 3000 series (DSP) (FW)</b>	<b>42.4.X.486</b>
<b>IP Counter IP, 3000 series (FW)</b>	<b>4.0.2.31110</b>
<b>IP Counter Web enabled on-board setup tool, 3000 series (PCST) (FW)</b>	<b>3.0.41019.1</b>
<b>Firmware Upgrader II Software (FUII) (SW) (3000 Series only)</b>	<b>1.3.0.7</b>

\* New or Recently Updated

### Unsubscribe Information:

You have been sent this technical bulletin because you have previously contacted Irisys for technical support, or have been identified as a technical contact within your company. If you do not wish to receive this technical bulletin in future then please send an email to [counting.support@irisys.co.uk](mailto:counting.support@irisys.co.uk) and we will remove you from the email list.