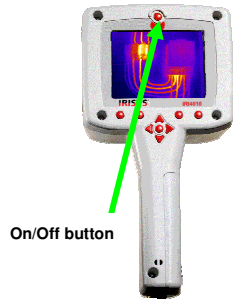


HOW TO TURN YOUR IMAGER ON

Press and hold down the on/off button for a few seconds. Turn off using the same method. The on/off button is located above the screen.



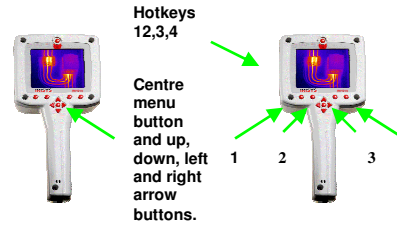
On/Off button

SURVEILLANCE



HOW TO SWITCH TO GREYSCALE

Press the centre menu button to bring up the menu screen.



Hotkeys 12,3,4

Centre menu button and up, down, left and right arrow buttons.

HOW TO FOCUS YOUR THERMAL IMAGER

Focus your Thermal Imager by rotating the lens on the front of the imager, whilst viewing the image on the screen.



Focusing

Subject Focused

Use the down arrow button to highlight the Camera Settings menu & then press hotkey 3 to select Camera Settings.

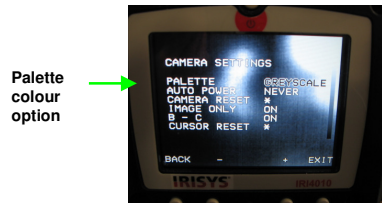


Measurement Settings

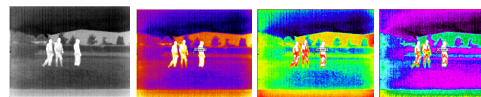


Camera Settings

The camera settings will appear with the palette setting already highlighted. Hotkey 2 and 3 allow the movement to the different colour palette's as seen below.



Palette colour option



Greyscale

Ironbow

Rainbow

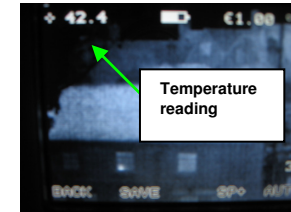
HC Rainbow

CANNIBIS FACTORY DETECTION AND TEMPERATURE MEASUREMENT



HOW TO TURN THE TEMPERATURE DISPLAY ON/OFF

The temperature display is turned on/off by pressing the centre menu button, then Camera Settings, then Image Only, then hotkey 2 & 3 for on & off.



Temperature reading

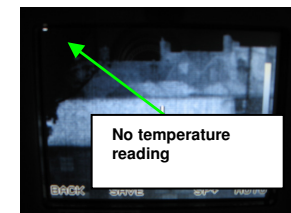
TEMPERATURE DISPLAYED



Image only off

SELECT IMAGE ONLY OFF

SURVEILLANCE (TEMPERATURE NOT REQUIRED)



No temperature reading

TEMPERATURE NOT DISPLAYED



Image only on

SELECT IMAGE ONLY ON

HOW TO RECHARGE THE IMAGER BATTERY

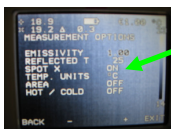
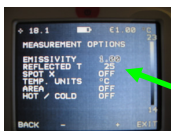
- ❖ Connect the AC Power lead or Car Charger lead as shown below.
- ❖ Battery recharging takes approximately 6 hours.
- ❖ Once fully charged imager operation time is approximately 6 hours.
- ❖ Please note:- the battery icon will flash when battery life is low. The battery then requires recharging.



AC Power lead or Car Charger lead



HOW TO TURN ON/OFF & MOVE CURSORS



Once in Measurement Options, arrow down to SPOT X and toggle hotkey 2 and 3 to turn the second cursor on and off

The cursors can be selected by pressing hot key 3. The type of cross shown on the screen above hot key 3 is then the cross that can be moved by the arrow keys. Please note cursors can also be moved once the image is on a PC.



SP+ means the + cursor can be moved
SPX means the x cursor can be moved
By toggling hotkey 3 either cursor can be selected and then moved by the arrow keys



The triangle (Δ) denotes the difference in temperature between the two cursor readings
Here the X cursor is selected

IMAGES CAN BE FROZEN AND SAVED TO THE MEMORY CARD

To capture an image & save it to the memory press hotkey 2 then press it again to save the image as a file on the memory card.

FREEZING & SAVING IMAGERS.



The memory card slot is located behind the same door as the battery recharging port

The saved image taken by the imager can be viewed on a PC using software on the supplied CD.

IRI4010 THERMAL IMAGING CAMERA



QUICK REFERENCE GUIDE – POLICE APPLICATIONS



Safety Warning.
The equipment described in this document uses a Class 2 laser. Under no account should anyone look directly into the laser beam or the laser beam exit aperture, irreversible damage to the eye may occur. The laser should not be operated when there are personnel in the imager's field of view.
Caution – use of controls or adjustments or performance of procedures other than those specified in this document may result in hazardous laser radiation exposure.

© 2007 InfraRed Integrated Systems Ltd. No part of this publication may be reproduced without prior permission in writing from InfraRed Integrated Systems Ltd. This document gives only a general description of the products and except where expressly provided shall form no part of any contract. From time to time changes may be made in the products.

InfraRed Integrated Systems Ltd.,
Park Circle,
Tithe Barn Way,
Swan Valley
Northampton.
NN4 9BG.
United Kingdom
Tel: +44 (0)1604 594200
Fax: +44 (0)1604 594210
Website: www.irisys.co.uk
Email sales@irisys.co.uk