

Tech Notes

Title: Changing the voltage on a 9009

Created: 9 Apr 2012

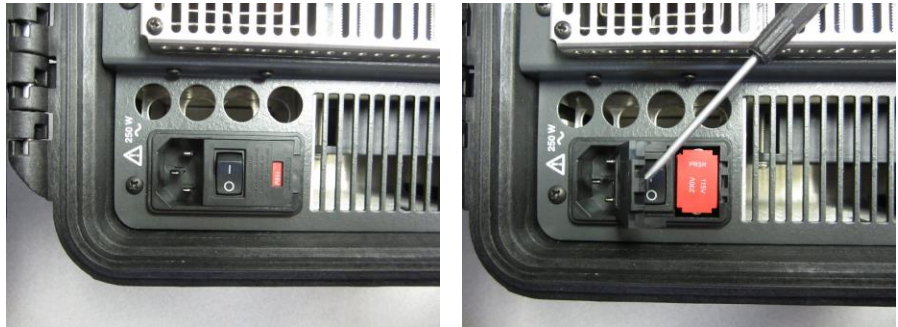
Last Revised: 9 Apr 2012

Applies To: 9009 dual-block drywell calibrator

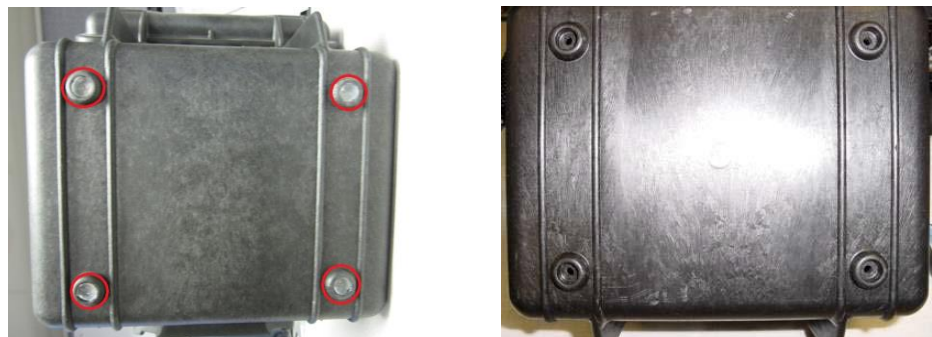
Problem Description: 9009 drywell is set to 110V, but it needs to be 230V or vice versa

Resolution/Work Around: There are two main parts to the voltage change. The Fuses and the Heater Switch. Here are the steps:

1. DISCONNECT POWER BEFORE BEGINNING.
2. Open the Power Entry Module (PEM) or Filter-Fuse-Switch and extract the fuse holder. Change the Slow Blow or Timed fuses to appropriate voltage setting (3AT) for 115V (1.6AT) for 230V. Install fuse holder so that the proper voltage is displayed in the indicator window.



3. To set the heater switch, you will need to disassemble part of the 9009 to gain access to the heater switch. Now, close case securely and flip the 9009 over to gain access to feet on the bottom of the case. Remove the bottom (4) screws that are installed in the feet. These screws are sealed with silicone to prevent moisture entry.



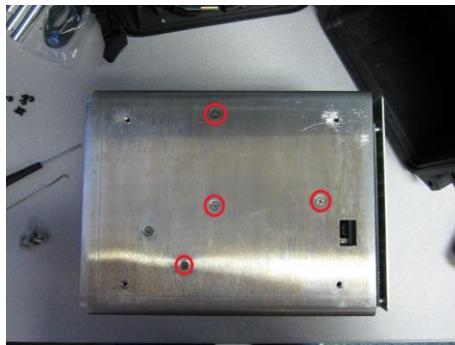
4. Open the case lid and lay the case on the side. Slide out the instrument from the case.



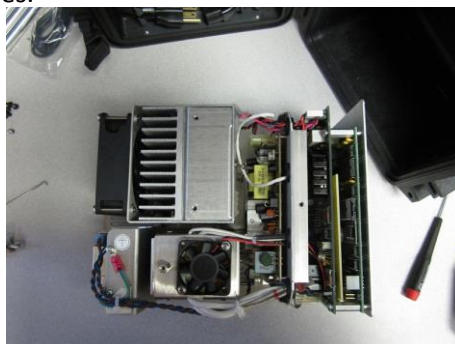
5. Set the case to the side. Put the instrument upright and remove the 6 screws shown below.



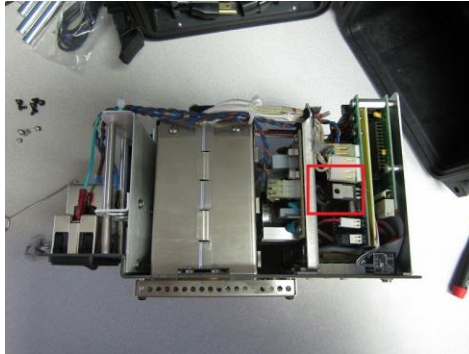
6. Turn over the instrument. Remove the 4 screws shown below.



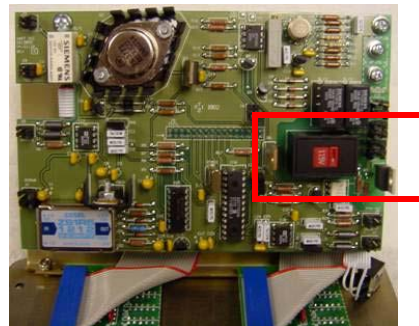
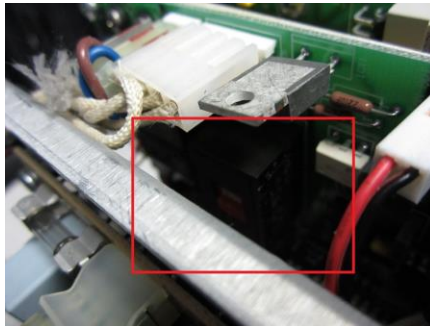
7. Remove the U Box Shield from the instrument. It may be necessary to slightly bend the shield away from the sides.



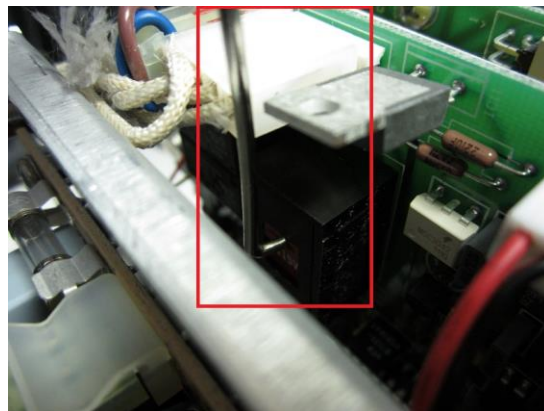
8. Put the unshielded instrument on the cold side facing down and the hot block facing up. The red box shows where the heater switch is located.



9. Use a flashlight to locate the switch. There is a black switch housing with a red switch under a voltage regulator.



10. Use the hooked end of the insert removal tool to move the switch to the appropriate voltage setting (up for 115V down for 230V).



11. Place the U Box Shield back on the instrument. **Note: Do Not Pinch Any Wires!** Put the screws back on the U Box Shield, 4 on bottom and 6 on top. Reinstall the unit into the case, install (4) bottom screws, reseal screws with silicone.

Other Information: