

Using HyperTerminal

Table of Contents

1. Connecting the device.....	3
2. Starting HyperTerminal.....	5
3. Configuring RS-232.....	6
4. Configuring TCP/IP.....	7
5. ASCII Setup.....	8
6. Check Communications.....	10
7. Capturing text.....	11

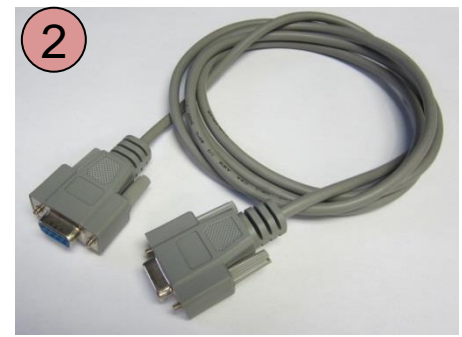
Connecting the Device

- 1 Locate the serial cable or ethernet cable for your device.

If your computer does not have a serial port, you will need a USB to serial adapter.

Here are a few examples of cables that can be used or are issued with the device:

1. RS-232 cable (DB9 F to 3.5 ST/M)
(part # 2410334)
2. RS-232 null modem cable (DB9 F/F)
(part # 2200962)
3. RS-232 USB adapter (USB A to DB9 M)
(part # 2761737)
4. RS-232 USB adapter, null (USB A to DB9 F)
(part # 2675479)
5. USB cable (USB A to USB B)
6. Ethernet cable, standard.



Connecting the Device

- 2 Connect the serial or USB cable to your computer.

If using a ethernet or TCP/IP connection, make sure the ethernet cable is connected and connected to a network.



- 3 Connect the serial cable or the ethernet cable to the device.

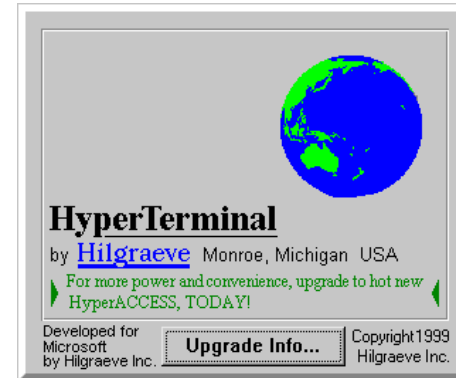


Starting HyperTerminal

- 1 Check to see if your computer has a program called Terminal or HyperTerminal.

Windows XP comes with the HyperTerminal. This is usually located in the Accessories folder and then the communications folder.

Later versions of Windows, such as 7 or 8, don't come with the HyperTerminal and must be purchased separately.

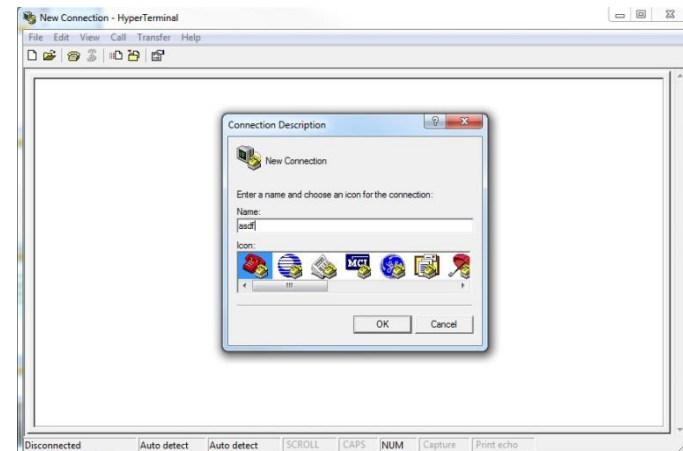


- 2 Click on the icon to use HyperTerminal.



- 3 Name the Connection Description. This can be anything and has no bearing on the data collected. For this example, we will use "asdf".

Click on the OK button.

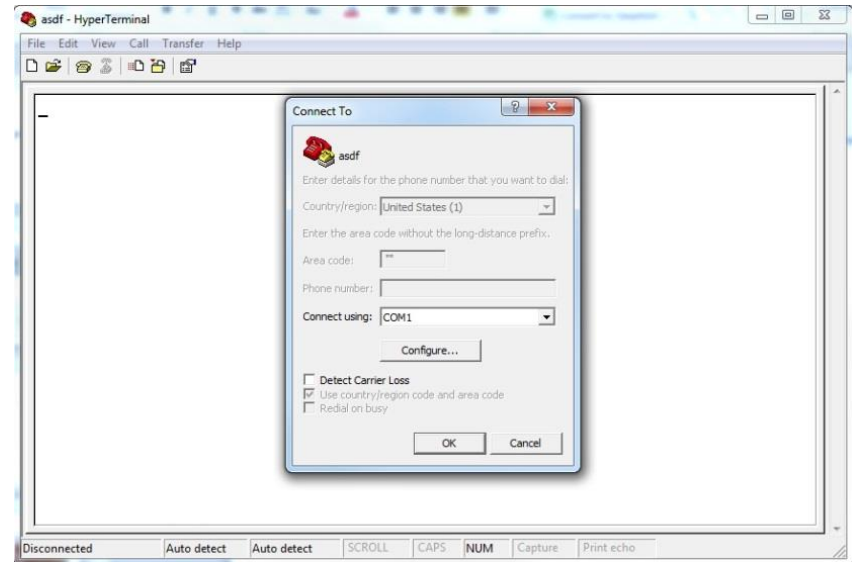


Configuring RS-232

- 1 In the Connect To window select the proper communication port from the computer to the device.

Most computers that have a RS-232 port will be COM1. If you are using a USB to RS-232 adapter, this will usually be COM5 or higher.

Now, Click on Configure..



- 2 In the COM Properties, Port Settings, select the following:

Bits per second: 2400 or 9600
(this can be different, check the device settings)

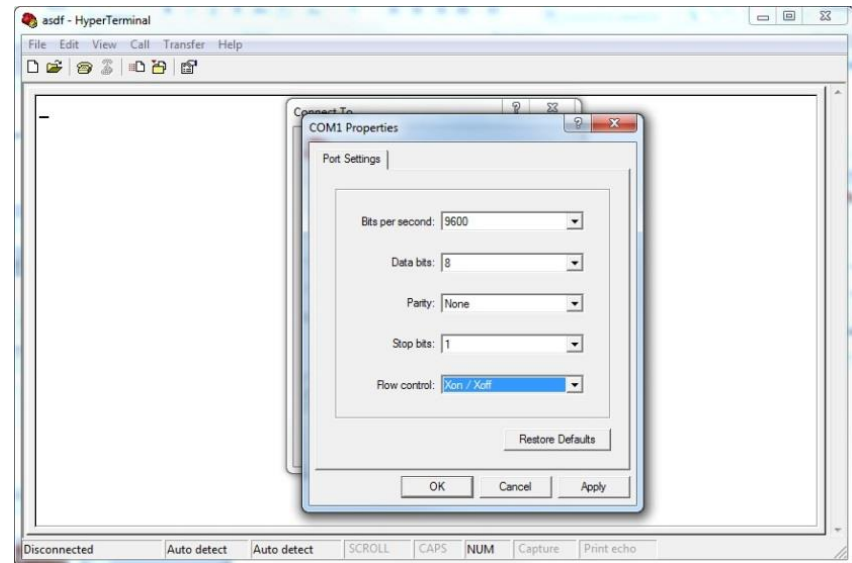
Data Bits: 8

Parity: None

Stop bits: 1

Flow control: None

Then click on OK.

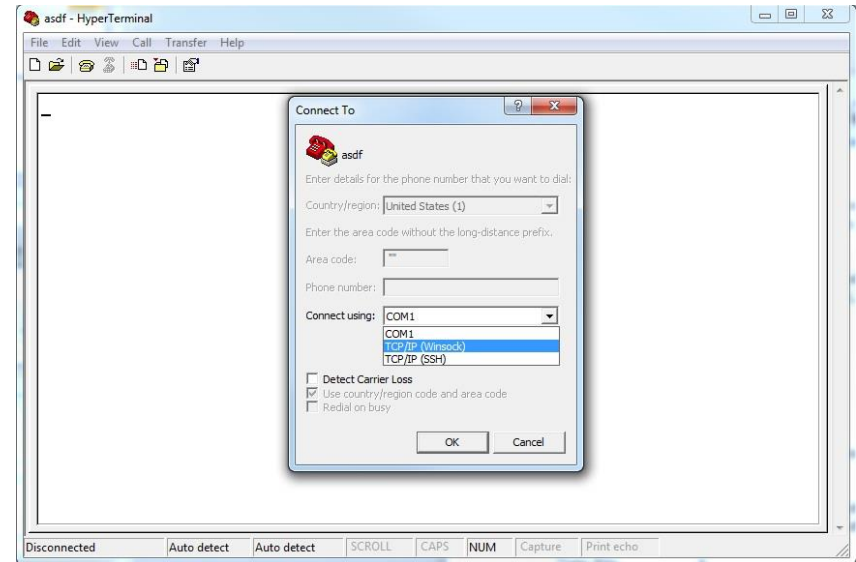


Configuring TCP/IP (ethernet)

- 1 In the Connect To window select the proper communication port from the computer to the Fluke device.

For an ethernet connection select the TCP/IP (Winsock) from the drop down menu.

Now, Click on Configure..



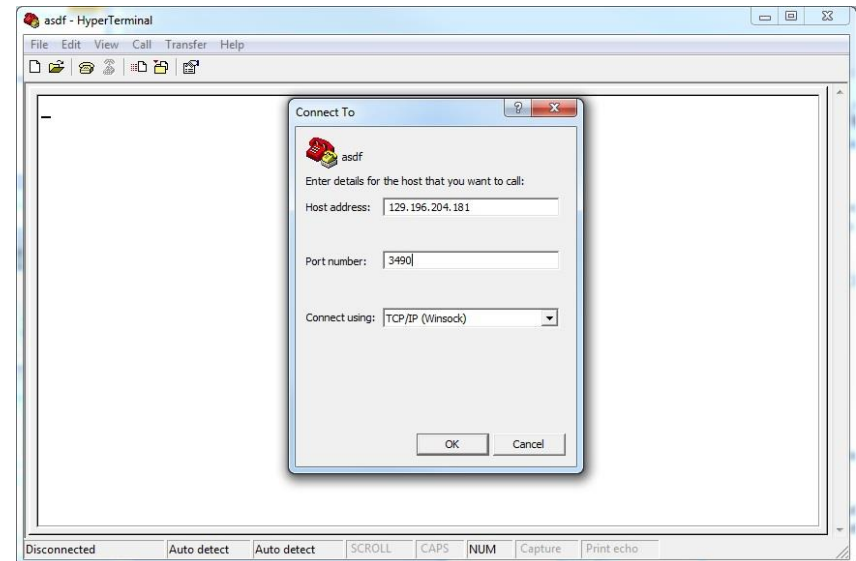
- 2 In the Connect To properties select the following:

Host address: 129.196.204.181
(this will be different for every device, check the device settings or manual for settings)

Port Number: 10001 or 3490
(this will be different for every device, check the device settings or manual for settings)

Connect using: TCP/IP (Winsock)

Then click on OK.

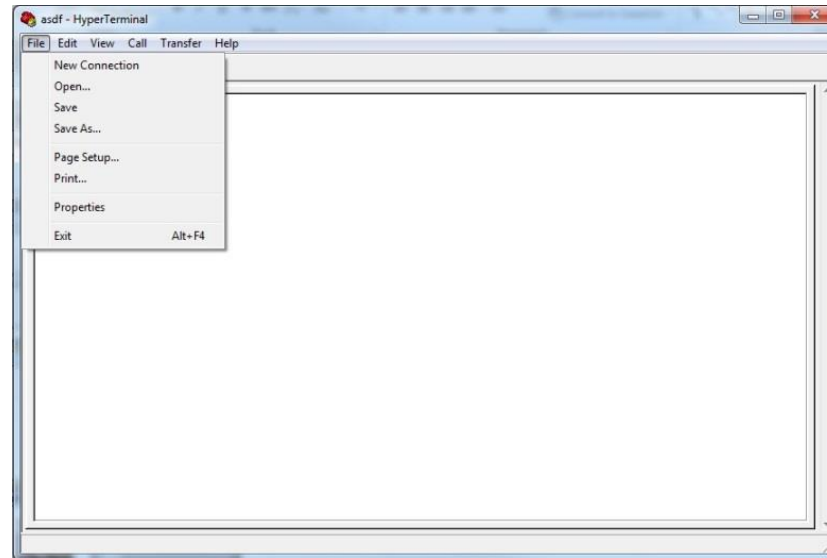


ASCII Setup

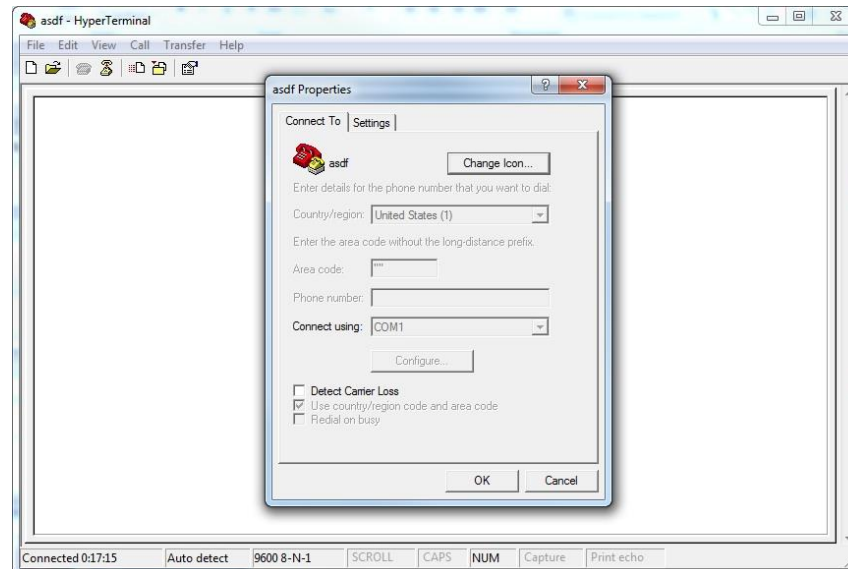
1 You will return back to the Connect window, click OK

2 Select File menu.

Click on Properties.

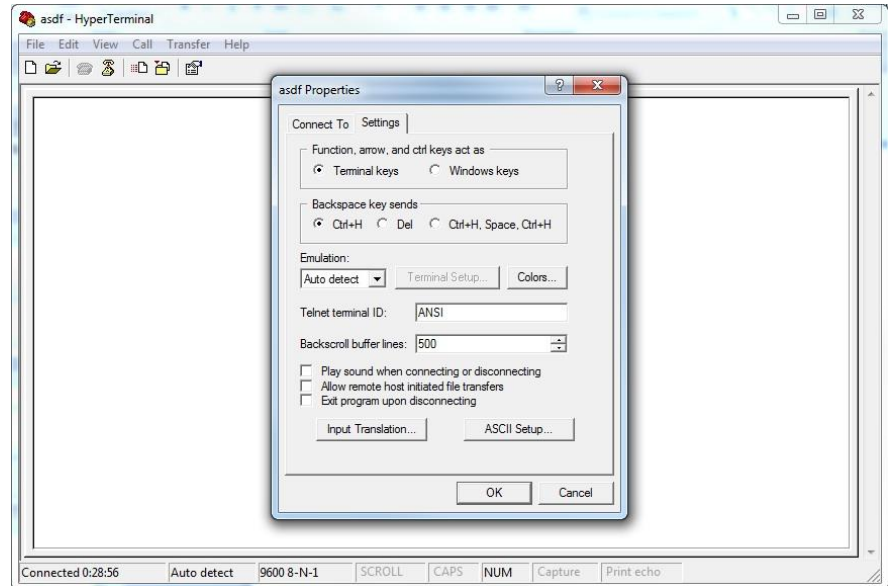


3 At the Properties window, select the Settings tab at the top.



ASCII Setup

4 Click on the ASCII Setup... button.



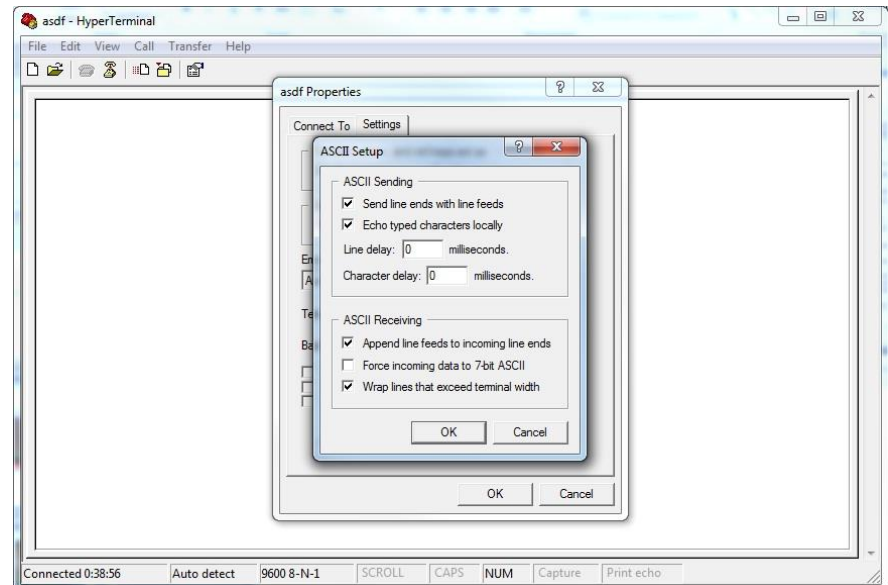
5 Select the following features by clicking on the box on the left next to the line.

Send line ends with line feeds

Echo typed characters locally

Append line feeds to incoming line ends

Now click, OK



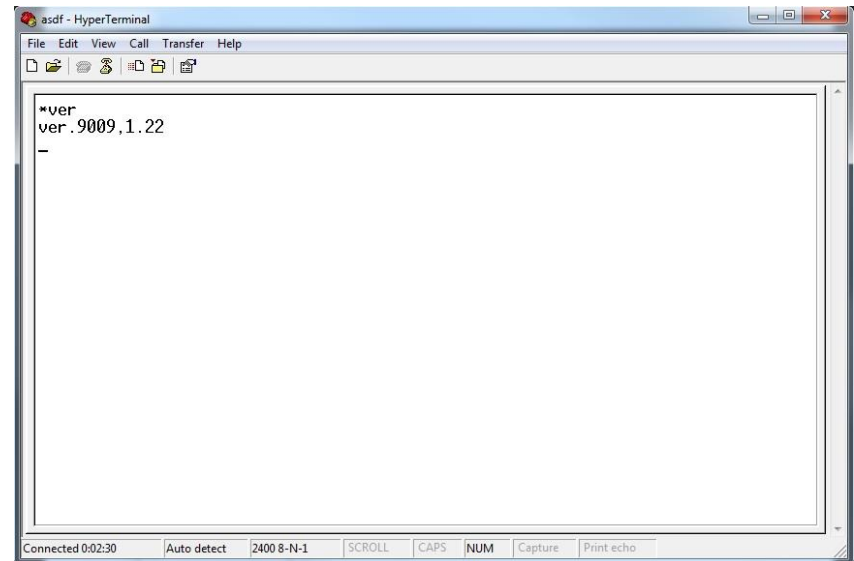
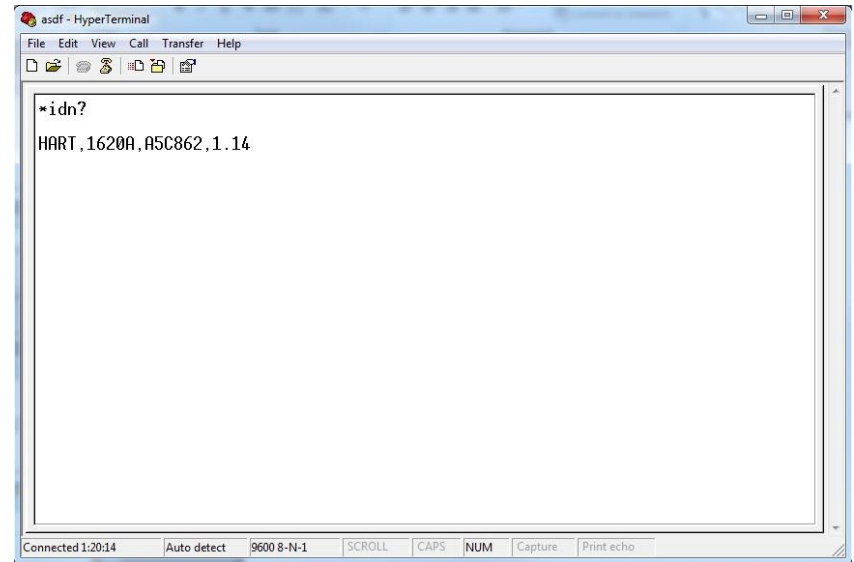
Check Communications

- 1 You will return back to the Properties window, click OK
- 2 Check the communications by typing a command.

*idn? or *ver are common commands. These are not used by every unit

*idn? should return the Manufacturer, Model, Serial number, and the Firmware version.

*ver should return the Model and the Firmware version.

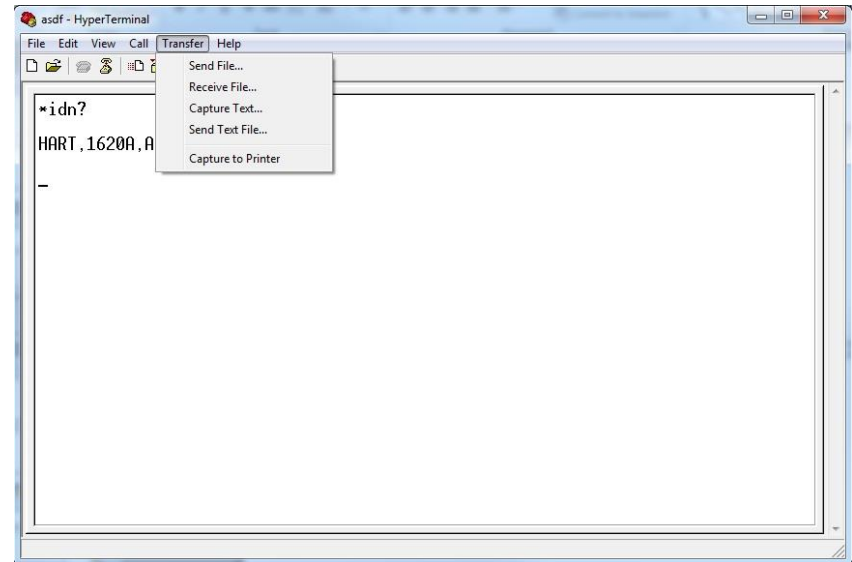


Capturing text

- 1 Before streaming or printing the data from the device, we will need to capture the text that is coming from the device.

Click on Transfer

Click on Capture Text

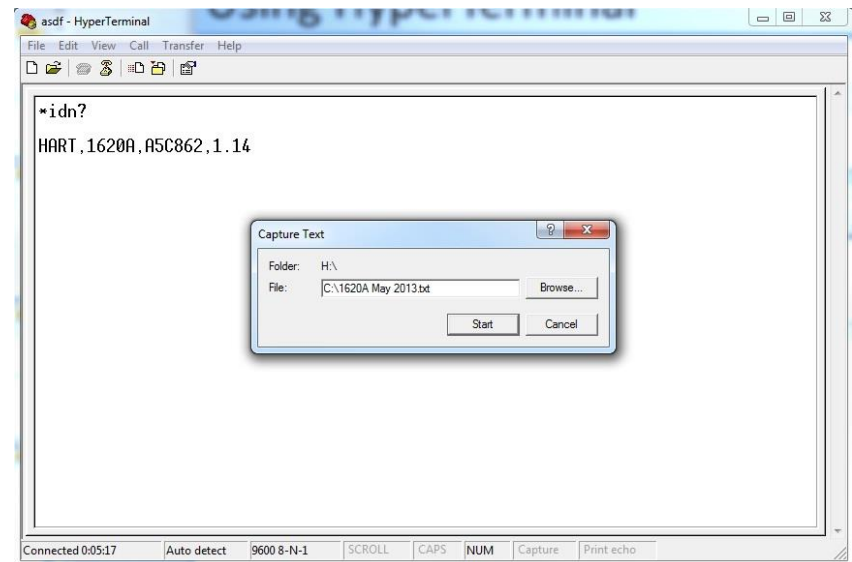


- 2 In the Capture Text window at the File line, enter the drive you wish to save to and enter the name of the file followed by a **.TXT** extension.

Example: C:\1620A May 2013.txt

Then, click Start

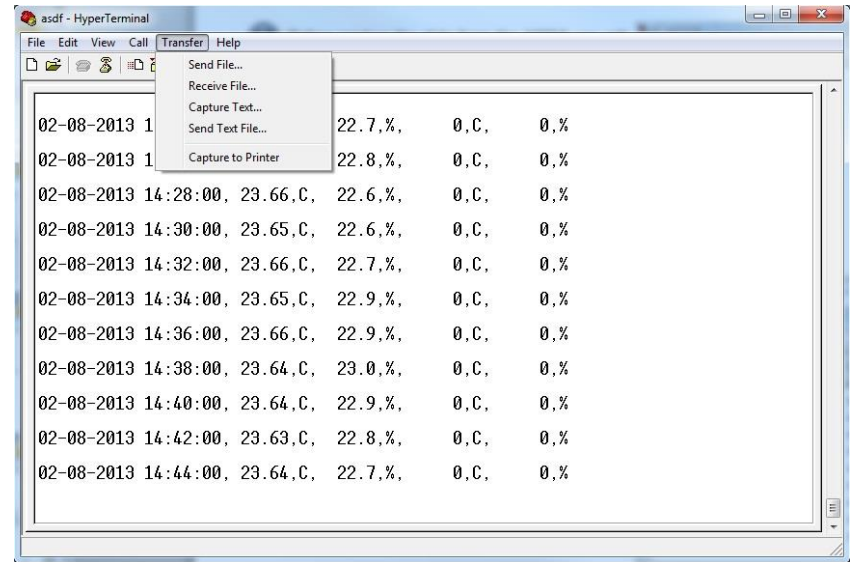
The HyperTerminal will now capture or record the lines of information and place the data in the file you chose.



Capturing text

- 3 After the data is done transferring, the capturing of the data will need to be stopped.

Click on the Transfer menu.



- 4 Under Capture Text, Click on Stop.

This will stop writing data to the file and conclude the process.

