

Chub-E4 setup in COMPASS for Pressure (or Flow)

Support Device Editor

Record Label: CHUB E4 29 / 69

Header | Calibration | Communications | Output | Set | Comment

Support Device Type: Advanced Device (>1 Output)

Record Type: Individual

Manufacturer: Hart Scientific

Model: 1529

Serial Number: A6B352

Identification: RQ653

Customer ID:

This device can be used as a DUT.

Close

Support Device Editor

Record Label: CHUB E4 29 / 69

Header | Calibration | Communications | Output | Set | Comment

Calibration Date: 1 /28/2013

Calibration Due Date: 1 /23/2014

Calibration Performed By: W459QC

Certification ID: A6B352

Calibration Setting1:

Calibration Setting2:

Calibration Setting3:

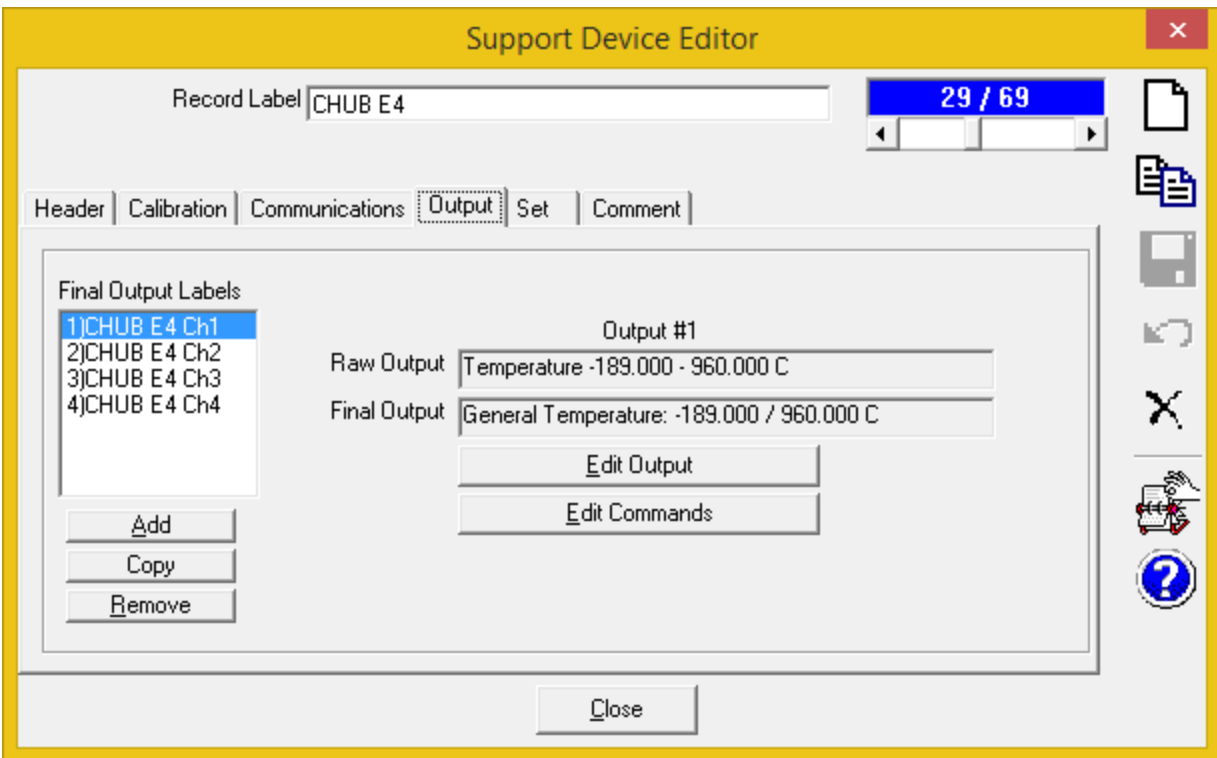
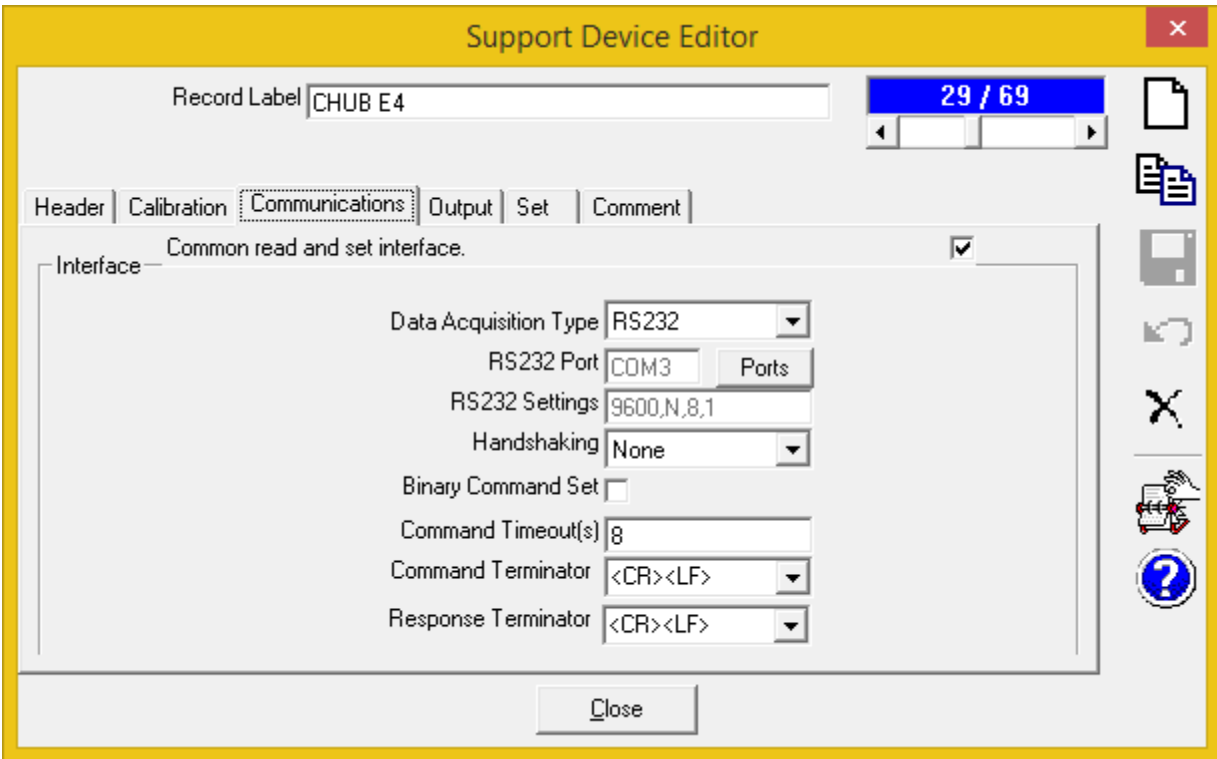
Calibration Setting4:

M&TE Device:

Record Last Edited: 6/26/2015 8:04:29 AM

Record Last Edited By: Admin

Close



Output Relationship

Raw Output | Final Output | Tolerance

Required Raw Outputs to determine Final Output 1

Output Type Temperature C

Output Source RS232

Minimum -189.000

Maximum 960.000

Resolution 0.001

Raw Output to Final Output Relationship
Same (Raw Output = Final Output)

OK Cancel

Output Relationship

Raw Output | Final Output | Tolerance

Label CHUB E4 Ch1

Output Type Temperature

Final Output General Temperature

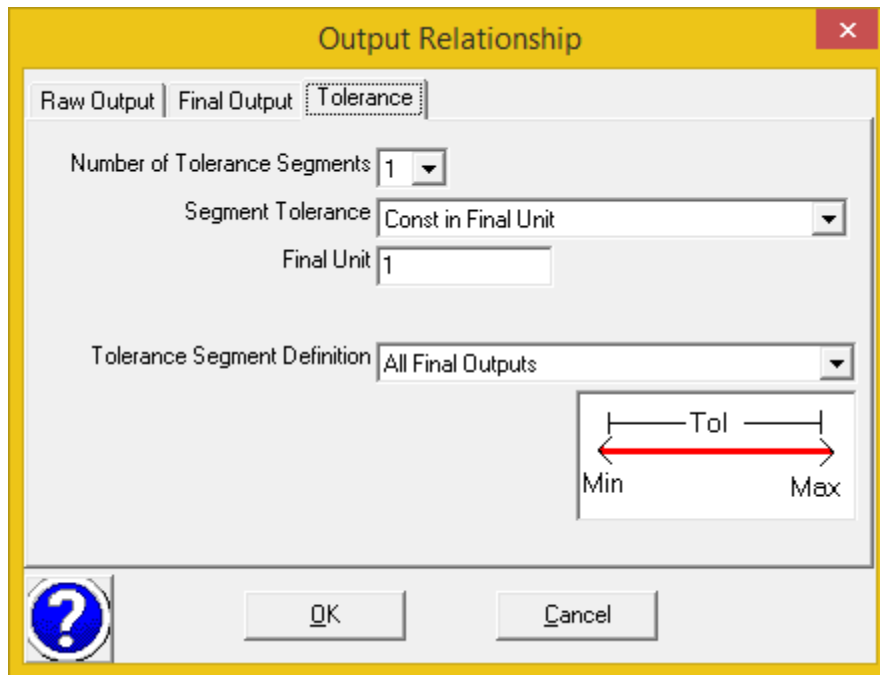
Unit C

Minimum -189.000

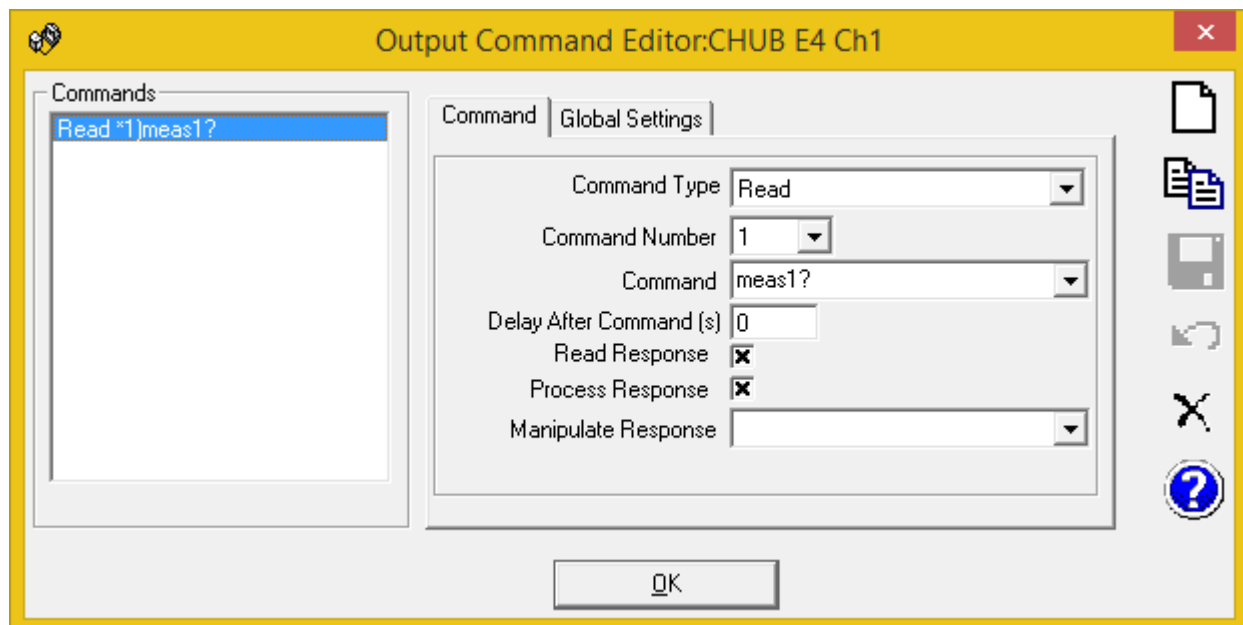
Maximum 960.000

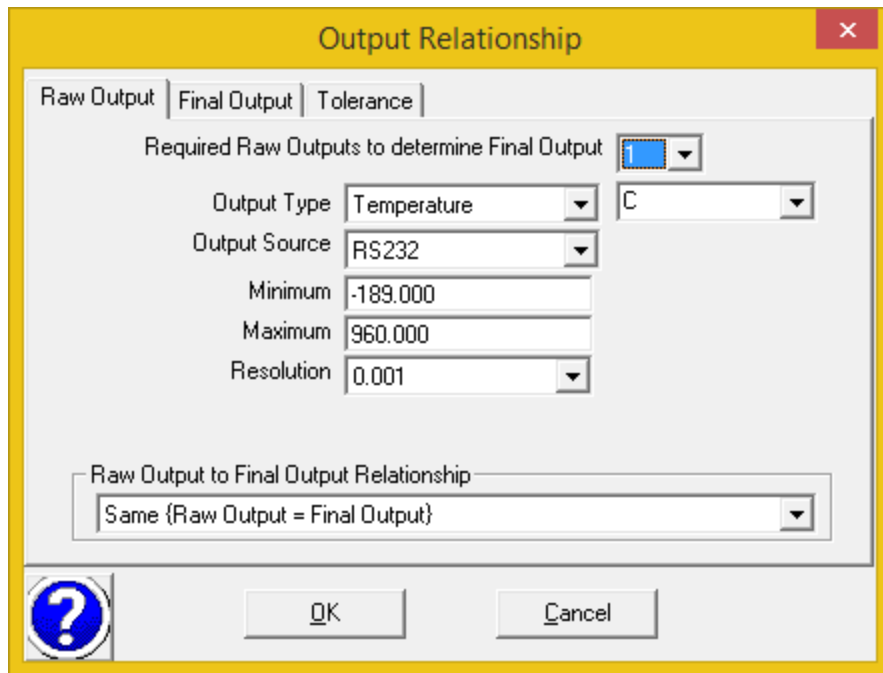
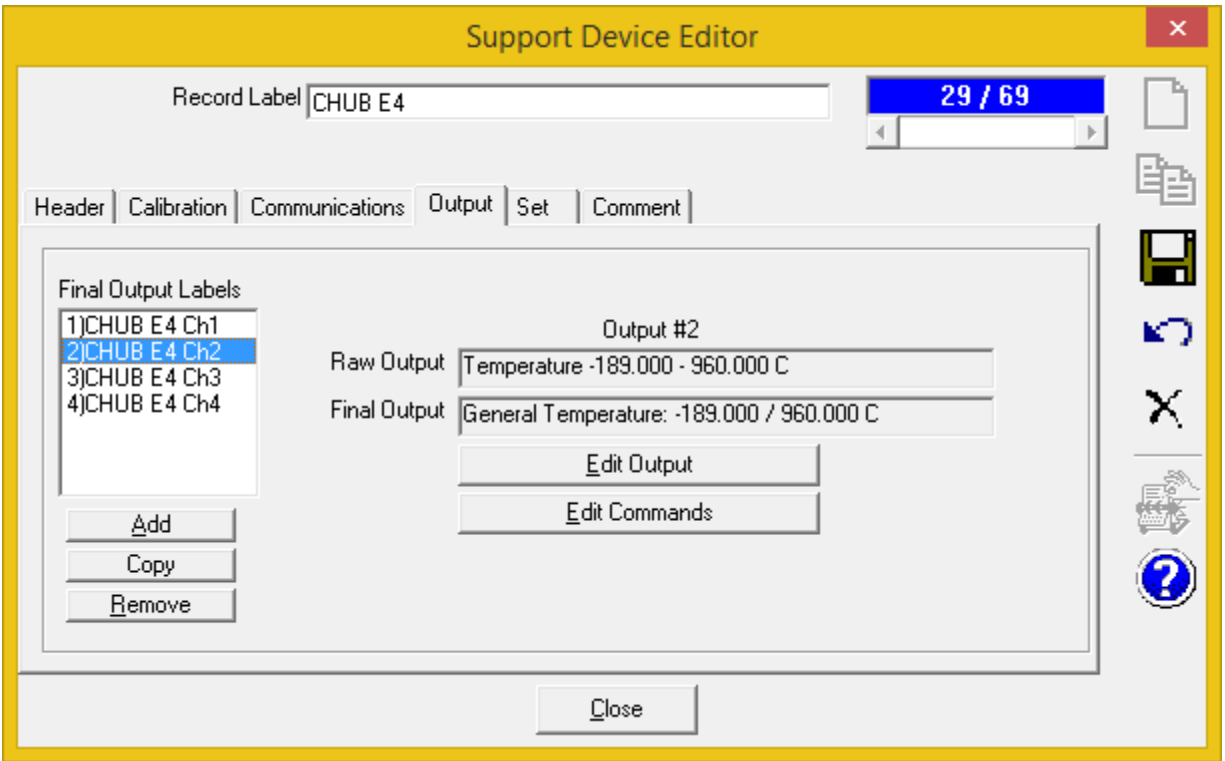
Resolution 0.001

OK Cancel



Commands





Output Relationship

Raw Output | **Final Output** | Tolerance

Label: CHUB E4 Ch2

Output Type: Temperature

Final Output: General Temperature

Unit: C

Minimum: -189.000

Maximum: 960.000

Resolution: 0.001

? OK Cancel

Output Relationship


Raw Output | Final Output | **Tolerance**

Number of Tolerance Segments: 1

Segment Tolerance: Const in Final Unit

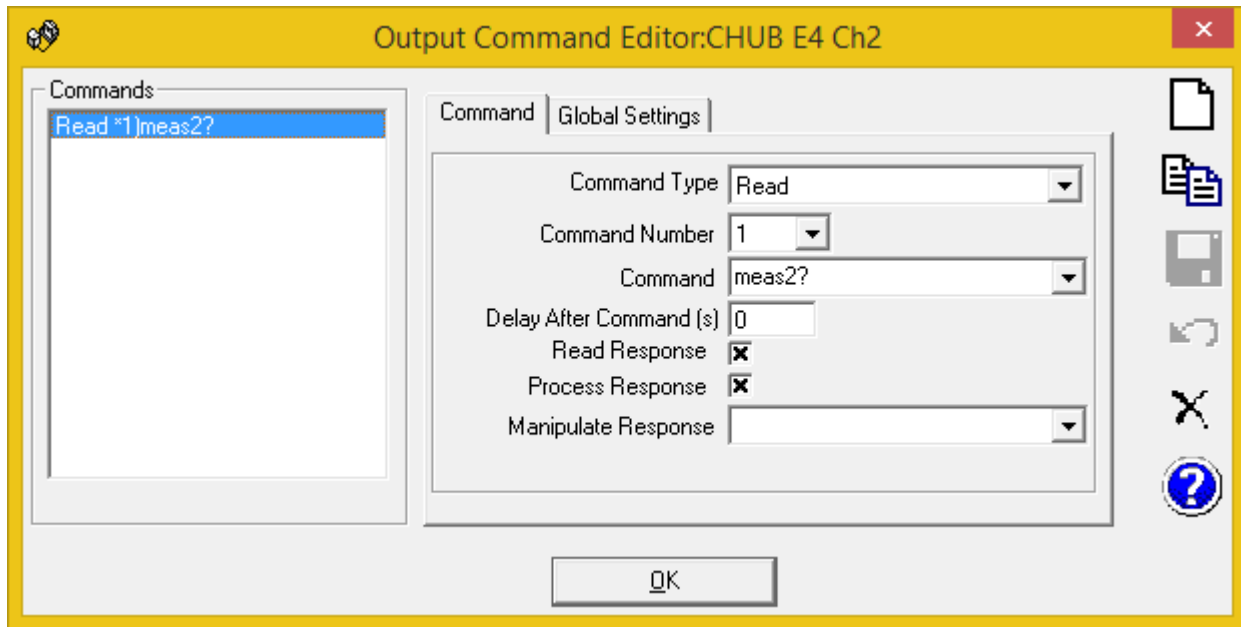
Final Unit: 1

Tolerance Segment Definition: All Final Outputs

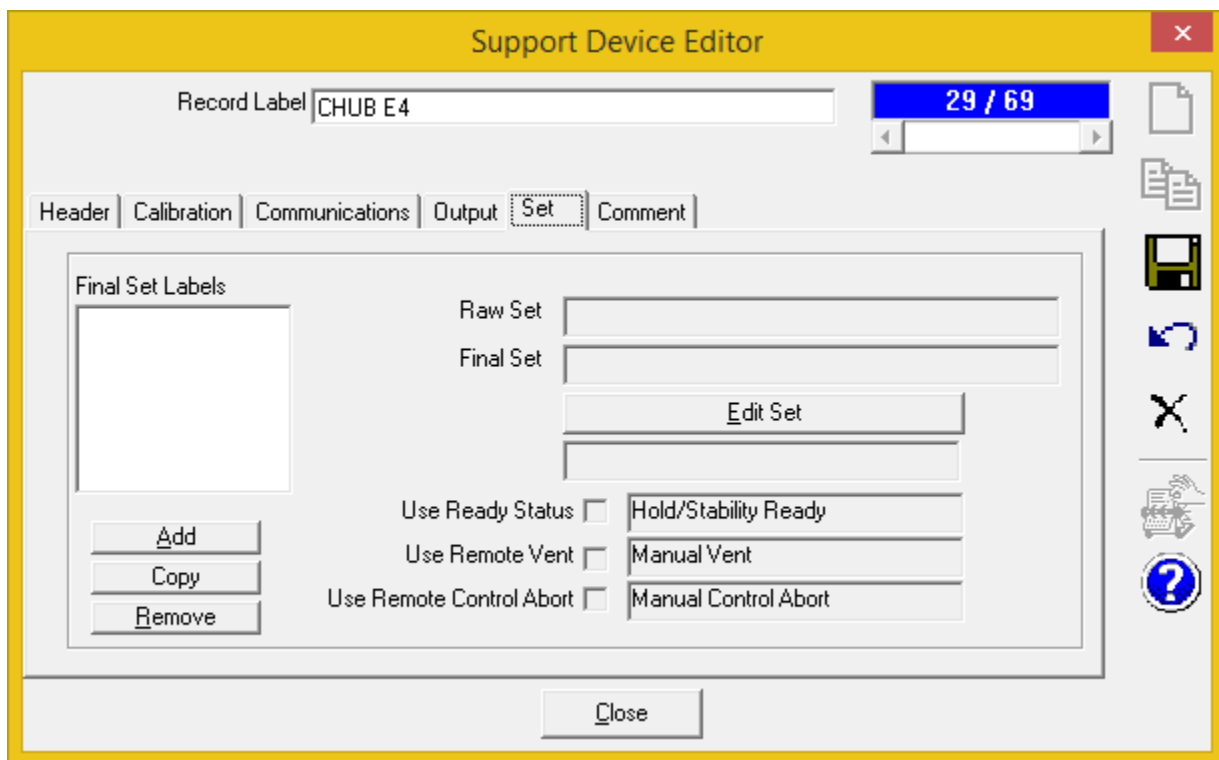


? OK Cancel

Commands



No Set Commands



Comments Are Optional

