



**INFRARAIL SPECIAL NUMBER R726**

**PURPOSE AND DESCRIPTION:**

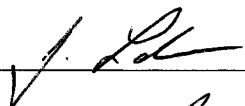
CUSTOMER REQUIRES A INFRARAIL TEMPERATURE SYSTEM WITH A SPECIAL SENSING HEAD AND TEMPERATURE RANGE AS FOLLOWS:

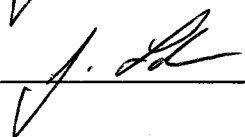
MODEL: DN999-99C  
RANGE: 1000 - 1700 DEG. C  
OPTICAL RESOLUTION: 0.3 " SPOT AT 9.0"  
WAVELENGTH: 0.7 - 1.0  $\mu$ m

NOTE: SENSING HEAD IS SAME AS MODLINE II SENSING HEAD SPECIAL E724.

**GENERILITY OF APPLICATION AND RESTRICTIONS:**

UNRESTRICTED: SUITABLE FOR USE WITH ALL STANDARD OPTIONS.

WRITTEN BY:  \_\_\_\_\_

APPROVED BY:  \_\_\_\_\_ DATE: 6-25-99

**INFRARAIL SPECIAL NUMBER R726**

REVISION:A  
DATE: 06-25-1999

**PRODUCTION INSTRUCTIONS:**

START WITH A MODEL DNE31-30C ELECTRONICS MODULE, AND INSTALL M1 MODULE  
AS PER BILL OF MATERIAL ON PAGE 3.

FOR THE SENSING HEAD, BUILD PER ASSEMBLY C11148. REFER TO DRAWING B11147 FOR THE  
DETECTOR ASSEMBLY.

**CALIBRATION INSTRUCTIONS:**

CALIBRATE AS PER STANDARD.  
SET SPECTRUM TO 0.7  $\mu\text{m}$  TO 1.0  $\mu\text{m}$ .  
SET  $I_{sc}$  @  $T_{bb}$  1000°C = 0.181  $\mu\text{A}$ .  
SET  $I_{sc}$  @  $T_{bb}$  1700°C = 15.850  $\mu\text{A}$ .

**MANUAL INSTRUCTIONS:**

GENERIC INFRARAIL SERIES MANUAL.

INFRARAIL SPECIAL NUMBER R726 CONTINUED,

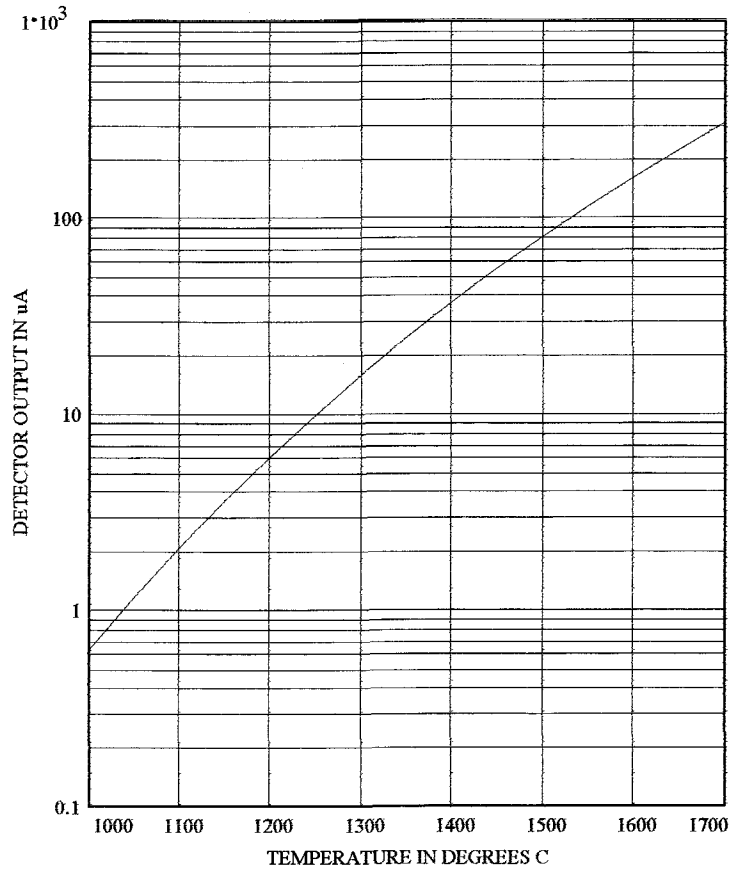
BILL OF MATERIAL

MODULE M1 REFERENCE: DWG.NO.C11194

| SYMBOL | PART NO.  | DESCRIPTION |           |                    |
|--------|-----------|-------------|-----------|--------------------|
| R1     | 102053011 | RESISTOR    | 205 Kohm  | METAL FILM 1/4W 1% |
| R44    | 101872011 | RESISTOR    | 18.7 Kohm | METAL FILM 1/4W 1% |
| R54    | 101303011 | RESISTOR    | 130 Kohm  | METAL FILM 1/4W 1% |
| R45    | 101272011 | RESISTOR    | 12.7 Kohm | METAL FILM 1/4W 1% |
| R55    | 105112011 | RESISTOR    | 51.1 Kohm | METAL FILM 1/4W 1% |
| R46    | 109311011 | RESISTOR    | 9.31 Kohm | METAL FILM 1/4W 1% |
| R56    | 107682011 | RESISTOR    | 76.8 Kohm | METAL FILM 1/4W 1% |
| R47    | 106651011 | RESISTOR    | 6.65 Kohm | METAL FILM 1/4W 1% |
| R57    | 101183011 | RESISTOR    | 118 Kohm  | METAL FILM 1/4W 1% |
| R48    | 104421011 | RESISTOR    | 4.42 Kohm | METAL FILM 1/4W 1% |
| R58    | 101823011 | RESISTOR    | 182 Kohm  | METAL FILM 1/4W 1% |
| R49    | 102941011 | RESISTOR    | 2.94 Kohm | METAL FILM 1/4W 1% |
| R59    | 102873011 | RESISTOR    | 287 Kohm  | METAL FILM 1/4W 1% |
| R50    | 101871011 | RESISTOR    | 1.87 Kohm | METAL FILM 1/4W 1% |
| R60    | 104643011 | RESISTOR    | 464 Kohm  | METAL FILM 1/4W 1% |
| R51    | 101181011 | RESISTOR    | 1.18 Kohm | METAL FILM 1/4W 1% |
| R61    | 107683011 | RESISTOR    | 768 Kohm  | METAL FILM 1/4W 1% |
| R52    | 106980011 | RESISTOR    | 698 ohm   | METAL FILM 1/4W 1% |
| R53    | 109090011 | RESISTOR    | 909 ohm   | METAL FILM 1/4W 1% |
| R62    | 101304011 | RESISTOR    | 1.30 Mohm | METAL FILM 1/4W 1% |

INFRARAIL SPECIAL NUMBER R726  
TEMPERATURE RANGE: 1000 - 1700 C  
SPECTRUM: 0.7 - 1.0

| Temp<br>DEG. C | SENSOR<br>CURRENT<br>IN uA | Indicator current<br>4 - 20 mADC |
|----------------|----------------------------|----------------------------------|
| TC             | Isc(TC)                    | Iout(TC)                         |
| 1700           | 15.850                     | 20.000                           |
| 1650           | 12.782                     | 18.857                           |
| 1600           | 10.194                     | 17.714                           |
| 1550           | 8.034                      | 16.571                           |
| 1500           | 6.251                      | 15.429                           |
| 1450           | 4.796                      | 14.286                           |
| 1400           | 3.624                      | 13.143                           |
| 1350           | 2.693                      | 12.000                           |
| 1300           | 1.966                      | 10.857                           |
| 1250           | 1.407                      | 9.714                            |
| 1200           | 0.985                      | 8.571                            |
| 1150           | 0.673                      | 7.429                            |
| 1100           | 0.448                      | 6.286                            |
| 1050           | 0.290                      | 5.143                            |
| 1000           | 0.181                      | 4.000                            |



**IRCON**  
**Special No.R726**  
**Sensing Head**

**Operation Instructions**

July, 1999



IRCON, INC.  
7300 North Natchez Ave.  
Niles, Illinois 60714

Phone: 847 967 5151  
Toll Free: 800 323 7660  
Fax: 847 647 0948  
Web site: [www.ircon.com](http://www.ircon.com)  
e-mail: [ircon@ircon.com](mailto:ircon@ircon.com)

Shipping/Receiving  
7300 North Natchez Ave.  
Niles, Illinois 60714 USA

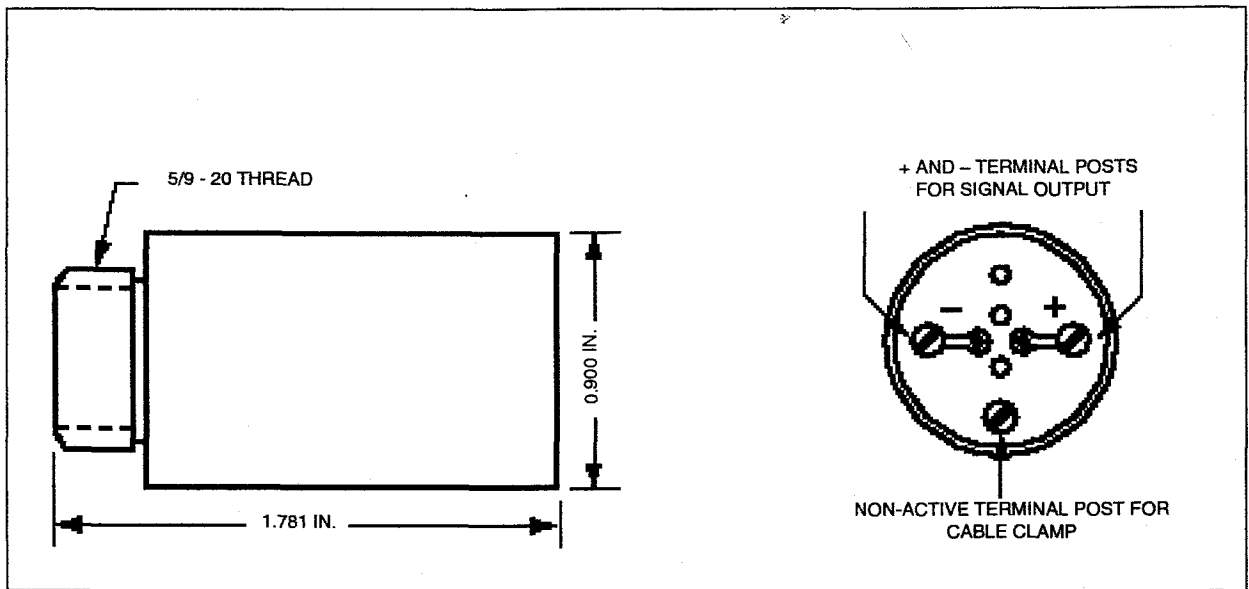


Fig. 1 - Physical dimensions

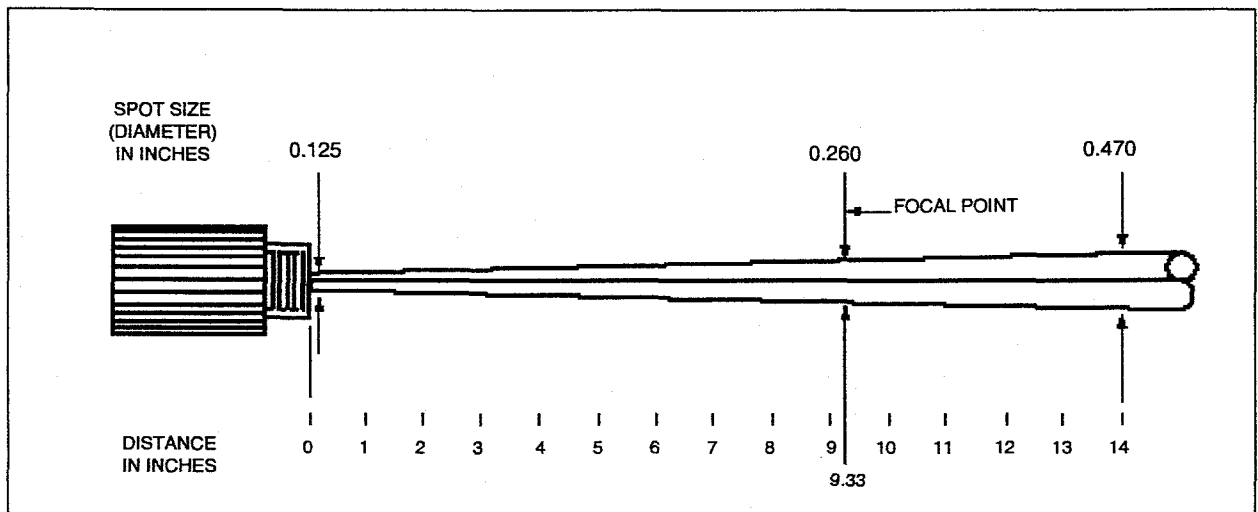


Fig. 2 Cone of Vision

## SIGNAL CABLE CONNECTIONS

### SENSING HEAD END OF CABLE

1. Remove the outer insulation as necessary. Cut off the shield braid and wire so that only the signal conductors (red and black) remain. The braided shield conductor is not connected at this end.
2. Insulate the end of the shield with electrical tape, shrink tubing, etc. to prevent accidental grounding of the shield.
3. Strip about 3/16 inch of insulation from the red and black conductors and tin the wires. Wrap the red wire around the positive terminal post (+) and the black wire around the negative post (-). Carefully tighten the screws.

### OTHER END OF CABLE

1. Remove the outer insulation as necessary. Cut off the shield braid, BUT LEAVE THE SHIELD WIRE INTACT AT THIS END.
2. Strip about 3/16 inch of insulation from the red and black conductors. Cover the shield wire with insulation or shrink tubing, leaving about 3/16 inch end exposed. Secure the end of the cable with electrical tape, shrink tubing, etc.
3. Tin the wire ends (including shield wire). The cable is now ready to be connected to the signal processing module, current meter, etc. For proper shielding, connect the shield wire to ground.

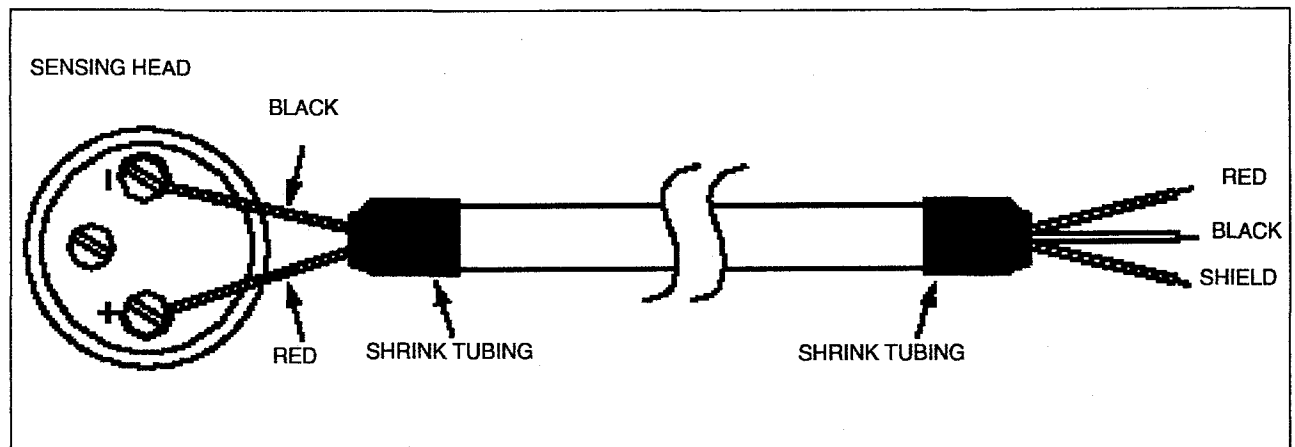


Fig. 3- Signal cable connections for special R726 sensing head

# Acknowledgment



IRCON, INC.  
7300 N. Natchez Ave.  
Niles, IL 60714 USA

Phone 847-967-5151  
Toll Free 800-323-7660  
Fax 847-647-0948

SOLD TO \_\_\_\_\_ CUSTOMER NO. 004702

KAWASO ELEC. INDUSTRIAL  
NANYOKU BLDG 2F  
7-51 6-CHOME  
ITACHIBORI, NISHIKU  
OSAKA,  
JAPAN

SHIPPING ADDRESS \_\_\_\_\_ TAX CODE \_\_\_\_\_

KAWASO ELEC. INDUSTRIAL  
NANYOKU BLDG 2F  
7-51 6-CHOME  
ITACHIBORI, NISHIKU  
OSAKA,  
JAPAN

REQUEST DATE (MM-DD-YY) 07-16-99 PROMISE DATE (MM-DD-YY) 07-16-99

OUR ORDER NO. 70970 ORDER DATE (MM-DD-YY) 06-23-99

YOUR ORDER NO. 99K1024

TERMS 0.00/0/30

F.O.B. ORIGIN

CODE 1068 (100.00)

VIA KINTETSU

SPECIAL SHIPPING INSTRUCTIONS \_\_\_\_\_

| LI | PART NO.                    | DESCRIPTION  | QTY | DSCNT% | UNIT PRICE         | AMOUNT             |
|----|-----------------------------|--|-----|--------|--------------------|--------------------|
| 1  | DN#1647<br><i>W.O. 2287</i> | <del>DN_DNE31-13C</del><br>IRCON INFRARAIL IRT SYSTEM-COMLETE<br><i>DN999-99C</i><br><i>Redo Special No. E724 on Model II = 22899 as New Model. DN999-99C with temp range 1000-1700C</i><br>Consists of the following:<br>1.0000 - INFRARAIL<br>1.0000 - DN - E SERIES<br>1.0000 - Std Cbl Lgth 12ft<br>1.0000 - D/100 RESOLUTION (E)<br>1.0000 - <del>800-13006</del><br>DN_DNE31-13C | 1   | 0.00   | 2000.00            | 2000.00            |
|    |                             |  |     |        | <i>RHB</i>         | <i>6/24</i>        |
|    |                             |  |     |        | <b>GRAND TOTAL</b> | <b>USD2,000.00</b> |

THIS ORDER IS ACCEPTED SUBJECT TO TERMS AND CONDITIONS SHOWN ON THIS AND THE REVERSE SIDE

SHIP TO: IRCON, INC.  
7300 N. NATCHEZ AVE.  
NILES, IL 60714 USA

IF TAX EXEMPT, PLEASE PROVIDE COPY OF EXEMPTION OR DIRECT PAYMENT CERTIFICATE.

TABLE 1 - OUTPUT CURRENT VS. TEMPERATURE FOR SPECIAL E724 SENSING HEAD

| <u>TEMP. IN DEG. C</u> | <u>Iout (microamps)</u> |
|------------------------|-------------------------|
| 1000.0                 | 0.1764                  |
| 1010.0                 | 0.1944                  |
| 1020.0                 | 0.2140                  |
| 1030.0                 | 0.2351                  |
| 1040.0                 | 0.2581                  |
| 1050.0                 | 0.2829                  |
| 1060.0                 | 0.3096                  |
| 1070.0                 | 0.3385                  |
| 1080.0                 | 0.3696                  |
| 1090.0                 | 0.4030                  |
| 1100.0                 | 0.4390                  |
| 1110.0                 | 0.4776                  |
| 1120.0                 | 0.5189                  |
| 1130.0                 | 0.5633                  |
| 1140.0                 | 0.6107                  |
| 1150.0                 | 0.6614                  |
| 1160.0                 | 0.7156                  |
| 1170.0                 | 0.7733                  |
| 1180.0                 | 0.8349                  |
| 1190.0                 | 0.9005                  |
| 1200.0                 | 0.9703                  |
| 1210.0                 | 1.0445                  |
| 1220.0                 | 1.1233                  |
| 1230.0                 | 1.2069                  |
| 1240.0                 | 1.2956                  |
| 1250.0                 | 1.3895                  |
| 1260.0                 | 1.4890                  |
| 1270.0                 | 1.5942                  |
| 1280.0                 | 1.7055                  |
| 1290.0                 | 1.8229                  |
| 1300.0                 | 1.9469                  |
| 1310.0                 | 2.0777                  |
| 1320.0                 | 2.2155                  |
| 1330.0                 | 2.3606                  |
| 1340.0                 | 2.5134                  |
| 1350.0                 | 2.6741                  |
| 1360.0                 | 2.8430                  |
| 1370.0                 | 3.0203                  |
| 1380.0                 | 3.2065                  |
| 1390.0                 | 3.4019                  |
| 1400.0                 | 3.6067                  |
| 1410.0                 | 3.8213                  |
| 1420.0                 | 4.0460                  |
| 1430.0                 | 4.2811                  |
| 1440.0                 | 4.5271                  |
| 1450.0                 | 4.7842                  |
| 1460.0                 | 5.0529                  |
| 1470.0                 | 5.3334                  |
| 1480.0                 | 5.6262                  |
| 1490.0                 | 5.9316                  |
| 1500.0                 | 6.2500                  |
| 1510.0                 | 6.5818                  |
| 1520.0                 | 6.9274                  |
| 1530.0                 | 7.2872                  |

TABLE 1 - OUTPUT CURRENT VS. TEMPERATURE FOR SPECIAL E724 SENSING HEAD

| <u>TEMP. IN DEG. C</u> | <u>Iout (microamps)</u> |
|------------------------|-------------------------|
| 1540.0                 | 7.6616                  |
| 1550.0                 | 8.0509                  |
| 1560.0                 | 8.4557                  |
| 1570.0                 | 8.8763                  |
| 1580.0                 | 9.3131                  |
| 1590.0                 | 9.7665                  |
| 1600.0                 | 10.2371                 |
| 1610.0                 | 10.7252                 |
| 1620.0                 | 11.2313                 |
| 1630.0                 | 11.7558                 |
| 1640.0                 | 12.2991                 |
| 1650.0                 | 12.8618                 |
| 1660.0                 | 13.4443                 |
| 1670.0                 | 14.0469                 |
| 1680.0                 | 14.6703                 |
| 1690.0                 | 15.3148                 |
| 1700.0                 | 15.9810                 |

CURRENT OUTPUT TABLE FOR SPECIAL R726  
 TEMPERATURE RANGE: 1000 TO 1700 DEGREES C  
 SPECTRUM: 0.70 TO 1.00 MICRONS

| DEG. C                      | [0]   | [1]   | [2]   | [3]   | [4]   | [5]   | [6]   | [7]   | [8]   | [9]   |
|-----------------------------|-------|-------|-------|-------|-------|-------|-------|-------|-------|-------|
| CURRENT OUTPUT IN MICROAMPS |       |       |       |       |       |       |       |       |       |       |
| [1000]                      | 0.176 | 0.178 | 0.180 | 0.182 | 0.183 | 0.185 | 0.187 | 0.189 | 0.191 | 0.193 |
| [1010]                      | 0.194 | 0.196 | 0.198 | 0.200 | 0.202 | 0.204 | 0.206 | 0.208 | 0.210 | 0.212 |
| [1020]                      | 0.214 | 0.216 | 0.218 | 0.220 | 0.222 | 0.224 | 0.226 | 0.229 | 0.231 | 0.233 |
| [1030]                      | 0.235 | 0.237 | 0.240 | 0.242 | 0.244 | 0.246 | 0.249 | 0.251 | 0.253 | 0.256 |
| [1040]                      | 0.258 | 0.260 | 0.263 | 0.265 | 0.268 | 0.270 | 0.273 | 0.275 | 0.278 | 0.280 |
| [1050]                      | 0.283 | 0.285 | 0.288 | 0.291 | 0.293 | 0.296 | 0.299 | 0.301 | 0.304 | 0.307 |
| [1060]                      | 0.310 | 0.312 | 0.315 | 0.318 | 0.321 | 0.324 | 0.327 | 0.330 | 0.333 | 0.336 |
| [1070]                      | 0.339 | 0.342 | 0.345 | 0.348 | 0.351 | 0.354 | 0.357 | 0.360 | 0.363 | 0.366 |
| [1080]                      | 0.370 | 0.373 | 0.376 | 0.379 | 0.383 | 0.386 | 0.389 | 0.393 | 0.396 | 0.400 |
| [1090]                      | 0.403 | 0.407 | 0.410 | 0.414 | 0.417 | 0.421 | 0.424 | 0.428 | 0.432 | 0.435 |
| [1100]                      | 0.439 | 0.443 | 0.447 | 0.450 | 0.454 | 0.458 | 0.462 | 0.466 | 0.470 | 0.474 |
| [1110]                      | 0.478 | 0.482 | 0.486 | 0.490 | 0.494 | 0.498 | 0.502 | 0.506 | 0.510 | 0.515 |
| [1120]                      | 0.519 | 0.523 | 0.528 | 0.532 | 0.536 | 0.541 | 0.545 | 0.550 | 0.554 | 0.559 |
| [1130]                      | 0.563 | 0.568 | 0.573 | 0.577 | 0.582 | 0.587 | 0.591 | 0.596 | 0.601 | 0.606 |
| [1140]                      | 0.611 | 0.616 | 0.621 | 0.626 | 0.631 | 0.636 | 0.641 | 0.646 | 0.651 | 0.656 |
| [1150]                      | 0.661 | 0.667 | 0.672 | 0.677 | 0.683 | 0.688 | 0.693 | 0.699 | 0.704 | 0.710 |
| [1160]                      | 0.716 | 0.721 | 0.727 | 0.733 | 0.738 | 0.744 | 0.750 | 0.756 | 0.762 | 0.767 |
| [1170]                      | 0.773 | 0.779 | 0.785 | 0.791 | 0.798 | 0.804 | 0.810 | 0.816 | 0.822 | 0.829 |
| [1180]                      | 0.835 | 0.841 | 0.848 | 0.854 | 0.861 | 0.867 | 0.874 | 0.880 | 0.887 | 0.894 |
| [1190]                      | 0.901 | 0.907 | 0.914 | 0.921 | 0.928 | 0.935 | 0.942 | 0.949 | 0.956 | 0.963 |
| [1200]                      | 0.970 | 0.978 | 0.985 | 0.992 | 0.999 | 1.007 | 1.014 | 1.022 | 1.029 | 1.037 |
| [1210]                      | 1.045 | 1.052 | 1.060 | 1.068 | 1.075 | 1.083 | 1.091 | 1.099 | 1.107 | 1.115 |
| [1220]                      | 1.123 | 1.131 | 1.140 | 1.148 | 1.156 | 1.165 | 1.173 | 1.181 | 1.190 | 1.198 |
| [1230]                      | 1.207 | 1.216 | 1.224 | 1.233 | 1.242 | 1.251 | 1.260 | 1.269 | 1.277 | 1.287 |
| [1240]                      | 1.296 | 1.305 | 1.314 | 1.323 | 1.333 | 1.342 | 1.351 | 1.361 | 1.370 | 1.380 |
| [1250]                      | 1.390 | 1.399 | 1.409 | 1.419 | 1.429 | 1.439 | 1.449 | 1.459 | 1.469 | 1.479 |
| [1260]                      | 1.489 | 1.499 | 1.510 | 1.520 | 1.530 | 1.541 | 1.552 | 1.562 | 1.573 | 1.584 |
| [1270]                      | 1.594 | 1.605 | 1.616 | 1.627 | 1.638 | 1.649 | 1.660 | 1.672 | 1.683 | 1.694 |
| [1280]                      | 1.706 | 1.717 | 1.729 | 1.740 | 1.752 | 1.763 | 1.775 | 1.787 | 1.799 | 1.811 |
| [1290]                      | 1.823 | 1.835 | 1.847 | 1.860 | 1.872 | 1.884 | 1.897 | 1.909 | 1.922 | 1.934 |
| [1300]                      | 1.947 | 1.960 | 1.973 | 1.986 | 1.998 | 2.012 | 2.025 | 2.038 | 2.051 | 2.064 |
| [1310]                      | 2.078 | 2.091 | 2.105 | 2.118 | 2.132 | 2.146 | 2.160 | 2.174 | 2.187 | 2.202 |
| [1320]                      | 2.216 | 2.230 | 2.244 | 2.258 | 2.273 | 2.287 | 2.302 | 2.316 | 2.331 | 2.346 |
| [1330]                      | 2.361 | 2.376 | 2.391 | 2.406 | 2.421 | 2.436 | 2.452 | 2.467 | 2.482 | 2.498 |
| [1340]                      | 2.514 | 2.529 | 2.545 | 2.561 | 2.577 | 2.593 | 2.609 | 2.625 | 2.641 | 2.658 |
| [1350]                      | 2.674 | 2.691 | 2.707 | 2.724 | 2.741 | 2.758 | 2.775 | 2.792 | 2.809 | 2.826 |
| [1360]                      | 2.843 | 2.860 | 2.878 | 2.895 | 2.913 | 2.931 | 2.949 | 2.966 | 2.984 | 3.002 |
| [1370]                      | 3.021 | 3.039 | 3.057 | 3.075 | 3.094 | 3.113 | 3.131 | 3.150 | 3.169 | 3.188 |
| [1380]                      | 3.207 | 3.226 | 3.245 | 3.264 | 3.284 | 3.303 | 3.323 | 3.343 | 3.362 | 3.382 |
| [1390]                      | 3.402 | 3.422 | 3.442 | 3.463 | 3.483 | 3.503 | 3.524 | 3.544 | 3.565 | 3.586 |



R726  
S/O 70970

## Section 1 — GENERAL INFORMATION

### 1.5 SPECIAL MODIFICATIONS

IRCON InfraRail Model DNE99-99C is modified for a special temperature range of 1000° to 1700°C, and a special optical resolution of 0.3" spot at 9.0".

This modified instrument may be used with all standard InfraRail options.

Details of this modification are retained in IRCON Engineering Files as InfraRail Special No. R726.

*NOTE:* Ircon, Inc. is the sole owner in all respects of any product or software modification or design herein specified.

**IRCON**  
**Special No.R726**  
**Sensing Head**

**Operation Instructions**

July, 1999



IRCON, INC.  
7300 North Natchez Ave.  
Niles, Illinois 60714

Phone: 847 967 5151  
Toll Free: 800 323 7660  
Fax: 847 647 0948  
Web site: [www.ircon.com](http://www.ircon.com)  
e-mail: [ircon@ircon.com](mailto:ircon@ircon.com)

Shipping/Receiving  
7300 North Natchez Ave.  
Niles, Illinois 60714 USA

# SPECIAL NO. R726 OPERATION INSTRUCTIONS

IRCON Special No. R726 Sensing Head Model DN999-9C has been specially designed to meet customer requirements for sensing heads with particularly small physical dimensions. The sensing head has been calibrated to provide output currents ranging from 0.1764 to 6.2500  $\mu\text{A}$  over the temperature range from 1000 to 1700°C when viewing blackbody targets. No provisions have been made for emissivity compensation. These instruments detect radiation with wavelengths from 0.70 to 1.00  $\mu\text{m}$ .

## SENSING HEAD INSTALLATION

Physical dimensions of the Sensing Head are given in Figure 1. The Sensing Head may be mounted in a tapped hole by means of the 5/8-20 mounting thread on the front of the sensor. Tighten firmly but gently.

### NOTE

**Ground the mounting surface to a good earth ground. If the Sensing Head case is above ground potential, erratic operation may result.**

## SPOT SIZE VS. WORKING DISTANCE

The Cone of Vision for the Sensing Head is given in Figure 2. Make sure that the spot size is less than the target size at the working distance you choose. Also make sure that the mechanical axis of the Sensing Head (which is also the optical axis) is centered on the target object. The optical axis will not deviate more than 0.16 inch from the mechanical axis at 9.0 inches.

## ELECTRICAL CONNECTIONS

The signal cable is to be customer supplied. We recommend a shielded two-conductor cable with outer insulation. Prepare the cable and connect it as indicated in Figure 3. The unmarked terminal in the Sensing Head is a non-active terminal post provided for a customer-supplied strain relief clamp. The cable must be secured so that motion of the Sensing Head does not cause the solder connections to break.

## OPERATION

When viewing high-temperature blackbody targets, the Sensing Head generates current according to the current versus temperature values given in "Current Output Table" pages. Note that output currents will be reduced for non-blackbody targets.

Details of this instrument are retained in IRCON Engineering Files as InfraRail Special No. R726.

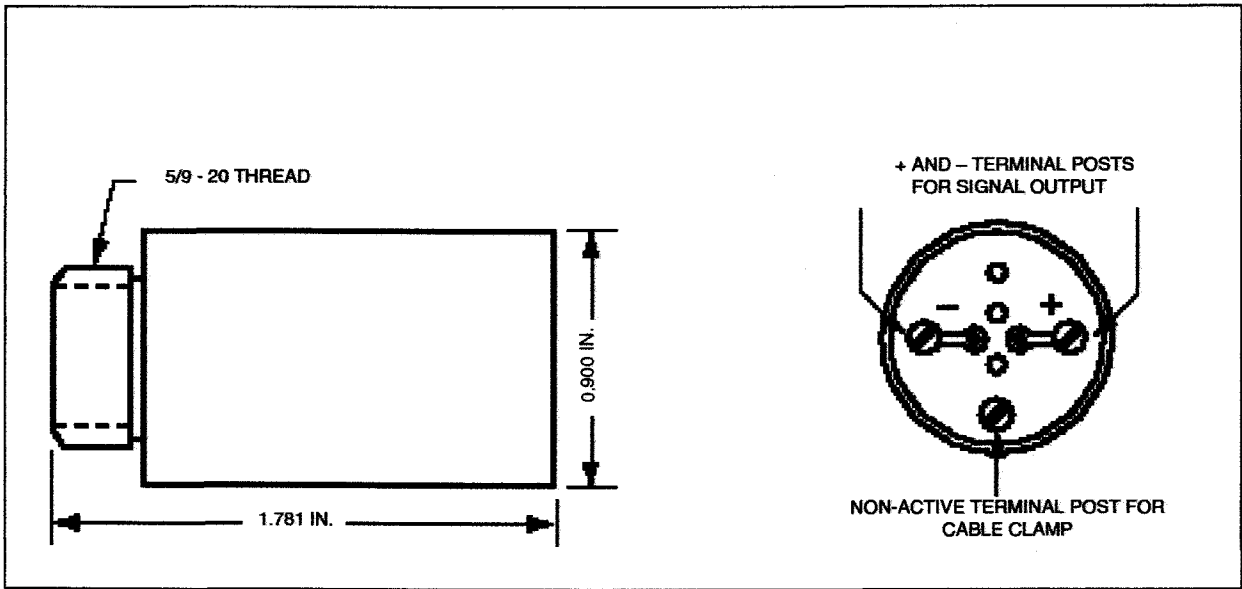


Fig. 1 - Physical dimensions

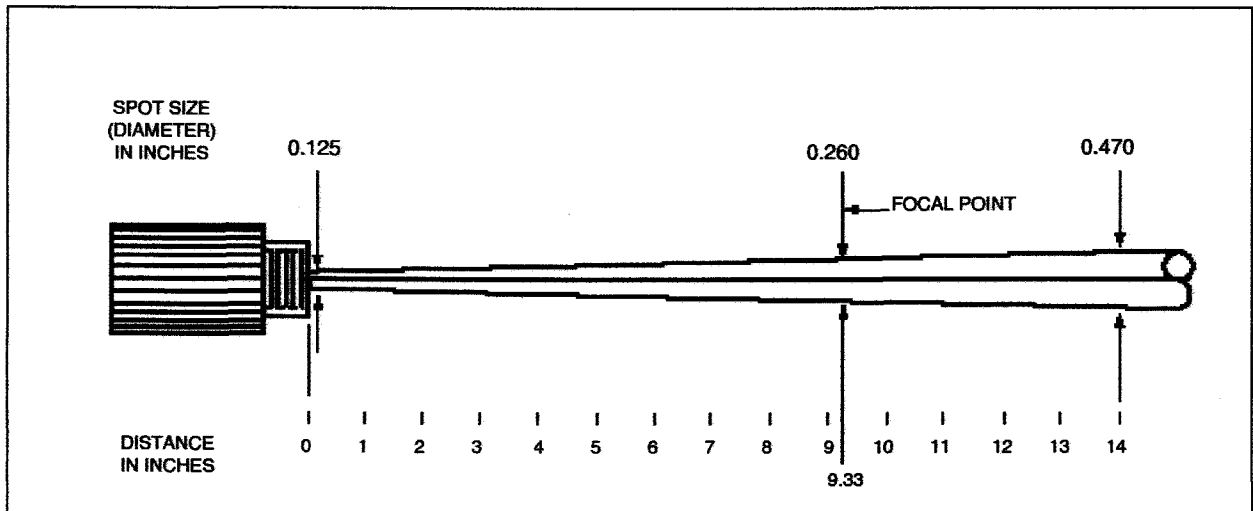


Fig. 2 Cone of Vision

# SPECIAL NO. R726 OPERATION INSTRUCTIONS

IRCON Special No. R726 Sensing Head Model DN999-9C has been specially designed to meet customer requirements for sensing heads with particularly small physical dimensions. The sensing head has been calibrated to provide output currents ranging from 0.1764 to 6.2500  $\mu\text{A}$  over the temperature range from 1000 to 1700°C when viewing blackbody targets. No provisions have been made for emissivity compensation. These instruments detect radiation with wavelengths from 0.70 to 1.00  $\mu\text{m}$ .

## SENSING HEAD INSTALLATION

Physical dimensions of the Sensing Head are given in Figure 1. The Sensing Head may be mounted in a tapped hole by means of the 5/8-20 mounting thread on the front of the sensor. Tighten firmly but gently.

### NOTE

**Ground the mounting surface to a good earth ground. If the Sensing Head case is above ground potential, erratic operation may result.**

## SPOT SIZE VS. WORKING DISTANCE

The Cone of Vision for the Sensing Head is given in Figure 2. Make sure that the spot size is less than the target size at the working distance you choose. Also make sure that the mechanical axis of the Sensing Head (which is also the optical axis) is centered on the target object. The optical axis will not deviate more than 0.16 inch from the mechanical axis at 9.0 inches.

## ELECTRICAL CONNECTIONS

The signal cable is to be customer supplied. We recommend a shielded two-conductor cable with outer insulation. Prepare the cable and connect it as indicated in Figure 3. The unmarked terminal in the Sensing Head is a non-active terminal post provided for a customer-supplied strain relief clamp. The cable must be secured so that motion of the Sensing Head does not cause the solder connections to break.

## OPERATION

When viewing high-temperature blackbody targets, the Sensing Head generates current according to the current versus temperature values given in "Current Output Table" pages. Note that output currents will be reduced for non-blackbody targets.

Details of this instrument are retained in IRCON Engineering Files as InfraRail Special No. R726.

## SIGNAL CABLE CONNECTIONS

### SENSING HEAD END OF CABLE

1. Remove the outer insulation as necessary. Cut off the shield braid and wire so that only the signal conductors (red and black) remain. The braided shield conductor is not connected at this end.
2. Insulate the end of the shield with electrical tape, shrink tubing, etc. to prevent accidental grounding of the shield.
3. Strip about 3/16 inch of insulation from the red and black conductors and tin the wires. Wrap the red wire around the positive terminal post (+) and the black wire around the negative post (-). Carefully tighten the screws.

### OTHER END OF CABLE

1. Remove the outer insulation as necessary. Cut off the shield braid, BUT LEAVE THE SHIELD WIRE INTACT AT THIS END.
2. Strip about 3/16 inch of insulation from the red and black conductors. Cover the shield wire with insulation or shrink tubing, leaving about 3/16 inch end exposed. Secure the end of the cable with electrical tape, shrink tubing, etc.
3. Tin the wire ends (including shield wire). The cable is now ready to be connected to the signal processing module, current meter, etc. For proper shielding, connect the shield wire to ground.

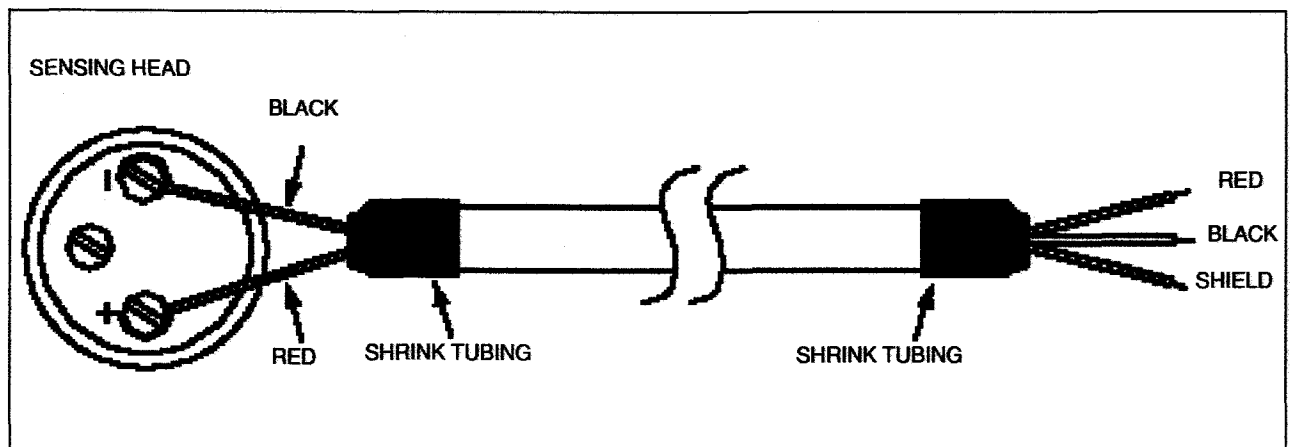


Fig. 3— Signal cable connections for special R726 sensing head

CURRENT OUTPUT TABLE FOR SPECIAL R726  
 TEMPERATURE RANGE: 1000 TO 1700 DEGREES C  
 SPECTRUM: 0.70 TO 1.00 MICRONS

| DEG. C                      | [0]   | [1]   | [2]   | [3]   | [4]   | [5]   | [6]   | [7]   | [8]   | [9]   |
|-----------------------------|-------|-------|-------|-------|-------|-------|-------|-------|-------|-------|
| CURRENT OUTPUT IN MICROAMPS |       |       |       |       |       |       |       |       |       |       |
| [1000]                      | 0.176 | 0.178 | 0.180 | 0.182 | 0.183 | 0.185 | 0.187 | 0.189 | 0.191 | 0.193 |
| [1010]                      | 0.194 | 0.196 | 0.198 | 0.200 | 0.202 | 0.204 | 0.206 | 0.208 | 0.210 | 0.212 |
| [1020]                      | 0.214 | 0.216 | 0.218 | 0.220 | 0.222 | 0.224 | 0.226 | 0.229 | 0.231 | 0.233 |
| [1030]                      | 0.235 | 0.237 | 0.240 | 0.242 | 0.244 | 0.246 | 0.249 | 0.251 | 0.253 | 0.256 |
| [1040]                      | 0.258 | 0.260 | 0.263 | 0.265 | 0.268 | 0.270 | 0.273 | 0.275 | 0.278 | 0.280 |
| [1050]                      | 0.283 | 0.285 | 0.288 | 0.291 | 0.293 | 0.296 | 0.299 | 0.301 | 0.304 | 0.307 |
| [1060]                      | 0.310 | 0.312 | 0.315 | 0.318 | 0.321 | 0.324 | 0.327 | 0.330 | 0.333 | 0.336 |
| [1070]                      | 0.339 | 0.342 | 0.345 | 0.348 | 0.351 | 0.354 | 0.357 | 0.360 | 0.363 | 0.366 |
| [1080]                      | 0.370 | 0.373 | 0.376 | 0.379 | 0.383 | 0.386 | 0.389 | 0.393 | 0.396 | 0.400 |
| [1090]                      | 0.403 | 0.407 | 0.410 | 0.414 | 0.417 | 0.421 | 0.424 | 0.428 | 0.432 | 0.435 |
| [1100]                      | 0.439 | 0.443 | 0.447 | 0.450 | 0.454 | 0.458 | 0.462 | 0.466 | 0.470 | 0.474 |
| [1110]                      | 0.478 | 0.482 | 0.486 | 0.490 | 0.494 | 0.498 | 0.502 | 0.506 | 0.510 | 0.515 |
| [1120]                      | 0.519 | 0.523 | 0.528 | 0.532 | 0.536 | 0.541 | 0.545 | 0.550 | 0.554 | 0.559 |
| [1130]                      | 0.563 | 0.568 | 0.573 | 0.577 | 0.582 | 0.587 | 0.591 | 0.596 | 0.601 | 0.606 |
| [1140]                      | 0.611 | 0.616 | 0.621 | 0.626 | 0.631 | 0.636 | 0.641 | 0.646 | 0.651 | 0.656 |
| [1150]                      | 0.661 | 0.667 | 0.672 | 0.677 | 0.683 | 0.688 | 0.693 | 0.699 | 0.704 | 0.710 |
| [1160]                      | 0.716 | 0.721 | 0.727 | 0.733 | 0.738 | 0.744 | 0.750 | 0.756 | 0.762 | 0.767 |
| [1170]                      | 0.773 | 0.779 | 0.785 | 0.791 | 0.798 | 0.804 | 0.810 | 0.816 | 0.822 | 0.829 |
| [1180]                      | 0.835 | 0.841 | 0.848 | 0.854 | 0.861 | 0.867 | 0.874 | 0.880 | 0.887 | 0.894 |
| [1190]                      | 0.901 | 0.907 | 0.914 | 0.921 | 0.928 | 0.935 | 0.942 | 0.949 | 0.956 | 0.963 |
| [1200]                      | 0.970 | 0.978 | 0.985 | 0.992 | 0.999 | 1.007 | 1.014 | 1.022 | 1.029 | 1.037 |
| [1210]                      | 1.045 | 1.052 | 1.060 | 1.068 | 1.075 | 1.083 | 1.091 | 1.099 | 1.107 | 1.115 |
| [1220]                      | 1.123 | 1.131 | 1.140 | 1.148 | 1.156 | 1.165 | 1.173 | 1.181 | 1.190 | 1.198 |
| [1230]                      | 1.207 | 1.216 | 1.224 | 1.233 | 1.242 | 1.251 | 1.260 | 1.269 | 1.277 | 1.287 |
| [1240]                      | 1.296 | 1.305 | 1.314 | 1.323 | 1.333 | 1.342 | 1.351 | 1.361 | 1.370 | 1.380 |
| [1250]                      | 1.390 | 1.399 | 1.409 | 1.419 | 1.429 | 1.439 | 1.449 | 1.459 | 1.469 | 1.479 |
| [1260]                      | 1.489 | 1.499 | 1.510 | 1.520 | 1.530 | 1.541 | 1.552 | 1.562 | 1.573 | 1.584 |
| [1270]                      | 1.594 | 1.605 | 1.616 | 1.627 | 1.638 | 1.649 | 1.660 | 1.672 | 1.683 | 1.694 |
| [1280]                      | 1.706 | 1.717 | 1.729 | 1.740 | 1.752 | 1.763 | 1.775 | 1.787 | 1.799 | 1.811 |
| [1290]                      | 1.823 | 1.835 | 1.847 | 1.860 | 1.872 | 1.884 | 1.897 | 1.909 | 1.922 | 1.934 |
| [1300]                      | 1.947 | 1.960 | 1.973 | 1.986 | 1.998 | 2.012 | 2.025 | 2.038 | 2.051 | 2.064 |
| [1310]                      | 2.078 | 2.091 | 2.105 | 2.118 | 2.132 | 2.146 | 2.160 | 2.174 | 2.187 | 2.202 |
| [1320]                      | 2.216 | 2.230 | 2.244 | 2.258 | 2.273 | 2.287 | 2.302 | 2.316 | 2.331 | 2.346 |
| [1330]                      | 2.361 | 2.376 | 2.391 | 2.406 | 2.421 | 2.436 | 2.452 | 2.467 | 2.482 | 2.498 |
| [1340]                      | 2.514 | 2.529 | 2.545 | 2.561 | 2.577 | 2.593 | 2.609 | 2.625 | 2.641 | 2.658 |
| [1350]                      | 2.674 | 2.691 | 2.707 | 2.724 | 2.741 | 2.758 | 2.775 | 2.792 | 2.809 | 2.826 |
| [1360]                      | 2.843 | 2.860 | 2.878 | 2.895 | 2.913 | 2.931 | 2.949 | 2.966 | 2.984 | 3.002 |
| [1370]                      | 3.021 | 3.039 | 3.057 | 3.075 | 3.094 | 3.113 | 3.131 | 3.150 | 3.169 | 3.188 |
| [1380]                      | 3.207 | 3.226 | 3.245 | 3.264 | 3.284 | 3.303 | 3.323 | 3.343 | 3.362 | 3.382 |
| [1390]                      | 3.402 | 3.422 | 3.442 | 3.463 | 3.483 | 3.503 | 3.524 | 3.544 | 3.565 | 3.586 |



# Acknowledgment



IRCON, INC.  
7300 N. Natchez Ave.  
Niles, IL 60714 USA

Phone 847-967-5151  
Toll Free 800-323-7660  
Fax 847-647-0948

REQUEST DATE (MM-DD-YY)  
**12-10-99**

PROMISE DATE (MM-DD-YY)  
**12-10-99**

OUR ORDER NO.  
**72091**

ORDER DATE (MM-DD-YY)  
**10-27-99**

YOUR ORDER NO.  
**048538**

TERMS

**0.00/0/30**

F.O.B.

**ORIGIN**

CODE

**1017 (100.00)**

VIA

**UPS**

SPECIAL SHIPPING INSTRUCTIONS

SOLD TO

CUSTOMER NO.

**009013**

KAYEX TECHNICAL CENTER  
1000 MILLSTEAD WAY  
ROCHESTER, NY 14624

SHIPPING ADDRESS

TAX CODE

KAYEX TECHNICAL CENTER  
1000 MILLSTEAD WAY  
ROCHESTER, NY 14624

*DN999-99c*

| LI | PART NO.                       | DESCRIPTION   | QTY | DSCNT% | UNIT PRICE | AMOUNT             |                    |
|----|--------------------------------|---|-----|--------|------------|--------------------|--------------------|
| 1  | DN-HO#2868<br><i>w.o. 3276</i> | <del>DN_DNE31-16C</del><br>IRCON INFRARAIL IRT SENSING HEAD ONLY<br><br>Consists of the following:<br>1.0000 - INFRARAIL HEAD ONLY<br>1.0000 - DN - E SERIES<br>1.0000 - D/100 RESOLUTION (E)<br>1.0000 - 900-1600C<br><br>DN_DNE31-16C | 1   | 0.00   | 2000.00    | 2000.00            |                    |
|    |                                |   |     |        |            | <b>GRAND TOTAL</b> | <b>USD2,000.00</b> |

*Redo Special No R726 - Special sensor only Temp range 1000-1700C*

THIS ORDER IS ACCEPTED SUBJECT TO TERMS AND CONDITIONS SHOWN ON THIS AND THE REVERSE SIDE

SHIP TO: IRCON, INC.  
7300 N. NATCHEZ AVE.  
NILES, IL 60714 USA

IF TAX EXEMPT, PLEASE PROVIDE COPY OF EXEMPTION OR DIRECT PAYMENT CERTIFICATE.

W.O.# 3276

BOM Number : DN-HO#2868 - IRCON INFRARAIL IRT

SO-LI: 72091\*1

| Level | Part Number | Description               | Quantity | UM | Alt | MB X | ECO No. | ECO Date | StartUse | End Use |
|-------|-------------|---------------------------|----------|----|-----|------|---------|----------|----------|---------|
| 1     | DN1DNE      | DN PRICES                 | 1.0000   | EA |     | M P  |         |          |          |         |
| 1     | C11148      | SENSING HEAD FINAL ASSEMB | 1.0000   | EA |     | M P  |         |          |          |         |
| 2     | 447312      | S.H. MECH ASSY SPL#E724   | 1.0000   | EA |     | B    |         |          |          |         |
| 2     | 20081267D   | SCREW #8-32 X 3/8" SOCKET | 1.0000   | EA |     | B    |         |          |          |         |
| 2     | 611032      | LENS PLANO CONVEX 12.5MM  | 1.0000   | EA |     | B    |         |          |          |         |
| 2     | B11147      | DETECTOR ASSEMBLY         | 1.0000   | EA |     | M P  |         |          |          |         |
| 3     | 501743      | PCB DETECTOR SILICON SPEC | 1.0000   | EA |     | B    |         |          |          |         |
| 3     | 445172      | STANDOFF SWAGE 1/80D X 3/ | 3.0000   | EA |     | B    |         |          |          |         |
| 3     | 410312      | SCREW #00-80 X 3/19 PAN H | 3.0000   | EA |     | B    |         |          |          |         |
| 3     | 432242      | PLASTIC SPACER .219" LONG | 1.0000   | EA |     | B    |         |          |          |         |
| 3     | 590532      | DET. SILCN MOD+/V/W/MAX/M | 1.0000   | EA |     | B    |         |          |          |         |
| 3     | 454122      | DET. FIELD STOP .030 DIA  | 1.0000   | EA |     | B    |         |          |          |         |
| 3     | 640482      | FILTER BANDPASS 0.7-1.0U  | 1.0000   | EA |     | B    |         |          |          |         |
| 3     | 990100002   | EPOXY HARDMAN #4005 GEN P | 1.0000   | EA |     | B    |         |          |          |         |
| 2     | 473752      | LABEL REIMAGING Z LENS    | 1.0000   | EA |     | B    |         |          |          |         |
| 2     | 990100002   | EPOXY HARDMAN #4005 GEN P | 1.0000   | EA |     | B    |         |          |          |         |

R726  
SENSOR ONLY

# Acknowledgment



IRCON, INC.  
7300 N. Natchez Ave.  
Niles, IL 60714 USA

Phone 847-967-5151  
Toll Free 800-323-7660  
Fax 847-647-0948

REQUEST DATE (MM-DD-YY)  
06-15-00

PROMISE DATE (MM-DD-YY)  
06-15-00

OUR ORDER NO.  
74133

ORDER DATE (MM-DD-YY)  
05-16-00

YOUR ORDER NO.  
B4821

TERMS

0.00/0/30

F.O.B.

ORIGIN

CODE

1021 (100.00)

VIA

UPS

SPECIAL SHIPPING INSTRUCTIONS

SOLD TO

CUSTOMER NO.

100565

UNIQUE INTL EXPORTING CO.  
295 OSER AVENUE  
SUITE 2  
HAUPPAUGE, NY 11788

SHIPPING ADDRESS

TAX CODE

UNIQUE INTL EXPORTING CO.  
295 OSER AVENUE  
SUITE 2  
HAUPPAUGE, NY 11788

*DN999-99C*

| LI                 | PART NO.                         | DESCRIPTION  | QTY | DISCNT% | UNIT PRICE | AMOUNT   |
|--------------------|----------------------------------|--|-----|---------|------------|--|
| 1                  | DN-HO#5454<br><i>W.I.O.#6623</i> | <del>DN_DNE31-13C</del><br>IRCON INFRARAIL IRT<br>SENSING HEAD ONLY<br><br>Consists of the following:<br>1.0000 - INFRARAIL HEAD ONLY<br>1.0000 - DN - E SERIES<br>1.0000 - D/100 RESOLUTION (E)<br>1.0000 - 800-1300C<br><br>DN_DNE31-13C | 1   | 0.00    | 2000.00    | 2000.00  |
|                    |                                  |  |     |         |            | <i>Red Special No R726</i><br><i>Special Mini head</i><br><br><i>RSB</i><br><i>5/16/00</i> |
| <b>GRAND TOTAL</b> |                                  |  |     |         |            | <b>USD2,000.00</b>   |

THIS ORDER IS ACCEPTED SUBJECT TO TERMS AND CONDITIONS SHOWN ON THIS AND THE REVERSE SIDE

SHIP TO: IRCON, INC.  
7300 N. NATCHEZ AVE.  
NILES, IL 60714 USA

IF TAX EXEMPT, PLEASE PROVIDE COPY OF  
EXEMPTION OR DIRECT PAYMENT CERTIFICATE.

# E724 HEADS INVENTORY

12-28-2000  
A.D.

✓=OK  
Stock  
CHECK

| P.N     | DESCRIPTION               | Stock Qty.         | Stock Check  |   |
|---------|---------------------------|--------------------|--|---|
| 640482  | Filter, .7-1.0μ           | 29                 | ✓  |   |
| 454122  | Field Stop, .030"         | <del>38</del>      | ✓  |   |
| 447292  | GLARE stop                | 0 ✓ ←              | <div style="border-left: 1px solid black; border-right: 1px solid black; height: 100px; margin: 0 auto;"></div> <p style="margin: 0;">SAME</p> |   |
| 447282  | sensor                    | 0 ✓ ←              |  |   |
| 410312  | BRASS SCREW               | <del>229</del> 229 |  | ✓ |
| 445172  | BRASS STANDOFF            | 131                |  | ✓ |
| 432242  | SPACER .219" Long         | <del>158</del>     |  | ✓ |
| 447302  | Housing detector          | 0 ✓ ←              | ✓  |   |
| 611032  | LENS                      | 48                 | ✓  |   |
| 50174-3 | P.C.B                     | 15                 | ✓  |   |
| 447312  | S.H. Assembly             | 22 ←               | ✓  |   |
| 473752  | LABEL<br>(REIMAGING lens) | 230                | ✓  |   |

———— Cone tip NYLOK Hex Head screw  
8-32 x 3/8"

# E724 HEADS INVENTORY

12-28-2000  
A.D.

| P.N     | DESCRIPTION               | STOCK QTY.         | ✓=OK<br>Stock<br>Check |   |
|---------|---------------------------|--------------------|------------------------|---|
| 640482  | Filter, .7-1.0μ           | 29                 | ✓                      |   |
| 454122  | Field Stop, .030"         | <del>438</del>     | ✓                      |   |
| 447292  | GLARE stop                | 0 ✓ ←              | SAME<br>↓              |   |
| 447282  | SENSOR                    | 0 ✓ ←              |                        |   |
| 410312  | BRASS SCREW               | <del>229</del> 229 |                        | ✓ |
| 445172  | BRASS STANDOFF            | 131                |                        | ✓ |
| 432242  | SPACER .219" Long         | <del>158</del>     |                        | ✓ |
| 447302  | HOUSING DETECTOR          | 0 ✓ ←              |                        |   |
| 611032  | LENS                      | 48                 | ✓                      |   |
| 50174-3 | P.C.B                     | 15                 | ✓                      |   |
| 447312  | S.H. ASSEMBLY             | 22 ←               | ✓                      |   |
| 47375-2 | LABEL<br>(REIMAGING lens) | 230                | ✓                      |   |

————— Cone tip NYLOK Hex HEAD SCREW  
8-32 x 3/8"

# Acknowledgment



IRCON, INC.  
7300 N. Natchez Ave.  
Niles, IL 60714 USA

Phone 847-967-5151  
Toll Free 800-323-7660  
Fax 847-647-0948

SOLD TO \_\_\_\_\_ CUSTOMER NO. 004702

KAWASO ELEC. INDUSTRIAL  
NANYOKU BLDG 2F  
7-51 6-CHOME  
ITACHIBORI, NISHIKU  
OSAKA,  
JAPAN

SHIPPING ADDRESS \_\_\_\_\_ TAX CODE \_\_\_\_\_

KAWASO ELEC. INDUSTRIAL  
NANYOKU BLDG 2F  
7-51 6-CHOME  
ITACHIBORI, NISHIKU  
OSAKA,  
JAPAN

REQUEST DATE (MM-DD-YY) 07-16-99 PROMISE DATE (MM-DD-YY) 07-16-99

OUR ORDER NO. 70970 ORDER DATE (MM-DD-YY) 06-23-99

YOUR ORDER NO. 99KI024

TERMS 0.00/0/30

F.O.B. ORIGIN

CODE 1068 (100.00)

VIA KINTETSU

SPECIAL SHIPPING INSTRUCTIONS \_\_\_\_\_

| LI                 | PART NO.                    | DESCRIPTION  | QTY | DSCNT% | UNIT PRICE             | AMOUNT             |
|--------------------|-----------------------------|--|-----|--------|------------------------|--------------------|
| 1                  | DN-HO#1715<br><br>W.O. 2312 | <del>DN_DNE31-13C</del> <i>DN999-99C</i><br>IRCON INFRARAIL IRT<br>SENSING HEAD ONLY<br><br>Consists of the following:<br>1.0000 - INFRARAIL HEAD ONLY<br>1.0000 - <del>DN E SERIES</del><br>1.0000 - <del>D/100 RESOLUTION (E)</del><br>1.0000 - <del>800 1300C</del><br><br>DN_DNE31-13C | 1   | 0.00   | 2000.00                | 2000.00            |
|                    |                             |  |     |        | <i>Redo Spec R726</i>  |                    |
|                    |                             |  |     |        | <i>Same as E724</i>    |                    |
|                    |                             |  |     |        | <i>With temp range</i> |                    |
|                    |                             |  |     |        | <i>1000-1700C</i>      |                    |
|                    |                             |  |     |        | <i>RVB6/24</i>         |                    |
| <b>GRAND TOTAL</b> |                             |  |     |        |                        | <b>USD2,000.00</b> |

THIS ORDER IS ACCEPTED SUBJECT TO TERMS AND CONDITIONS SHOWN ON THIS AND THE REVERSE SIDE

SHIP TO: IRCON, INC.  
7300 N. NATCHEZ AVE.  
NILES, IL 60714 USA

IF TAX EXEMPT, PLEASE PROVIDE COPY OF EXEMPTION OR DIRECT PAYMENT CERTIFICATE.

# Acknowledgment



IRCON, INC.  
7300 N. Natchez Ave.  
Niles, IL 60714 USA

Phone 847-967-5151  
Toll Free 800-323-7660  
Fax 847-647-0948

SOLD TO \_\_\_\_\_ CUSTOMER NO. 009013  
  
KAYEX TECHNICAL CENTER  
1000 MILLSTEAD WAY  
ROCHESTER, NY 14624

SHIPPING ADDRESS \_\_\_\_\_ TAX CODE \_\_\_\_\_  
  
KAYEX TECHNICAL CENTER  
1000 MILLSTEAD WAY  
ROCHESTER, NY 14624

REQUEST DATE (MM-DD-YY) 01-26-01 PROMISE DATE (MM-DD-YY) 01-26-01  
OUR ORDER NO. 76217 ORDER DATE (MM-DD-YY) 12-28-00  
YOUR ORDER NO. 051516

TERMS \_\_\_\_\_  
  
0.00/0/30

F.O.B. \_\_\_\_\_  
  
ORIGIN

CODE \_\_\_\_\_  
  
1017 (100.00)

VIA \_\_\_\_\_  
  
UPS

SPECIAL SHIPPING INSTRUCTIONS \_\_\_\_\_

*DN999-99c*

| LI                 | PART NO.                        | DESCRIPTION  | QTY | DSCNT% | UNIT PRICE | AMOUNT               |
|--------------------|---------------------------------|--|-----|--------|------------|----------------------|
| 1                  | DN-HO#8141<br><i>w.o. #8459</i> | DN_DNE31-13C<br>IRCON INFRARAIL IRT SENSING HEAD ONLY<br><i>Red Special No R726</i><br><i>Temp range 1000-1700C</i><br>Consists of the following:<br>1.0000 - INFRARAIL HEAD ONLY<br>1.0000 - DN - E SERIES<br>1.0000 - D/100 RESOLUTION (E)<br>1.0000 - 800-1300C<br><br>DN_DNE31-13C<br><br><i>RAB @ 1/2</i> | 5   | 0.00   | 2500.00    | 12500.00             |
| <b>GRAND TOTAL</b> |                                 |  |     |        |            | <b>USD 12,500.00</b> |

THIS ORDER IS ACCEPTED SUBJECT TO TERMS AND CONDITIONS SHOWN ON THIS AND THE REVERSE SIDE

SHIP TO: IRCON, INC.  
7300 N. NATCHEZ AVE.  
NILES, IL 60714 USA

IF TAX EXEMPT, PLEASE PROVIDE COPY OF EXEMPTION OR DIRECT PAYMENT CERTIFICATE.

# Acknowledgment



IRCON, INC.  
7300 N. Natchez Ave.  
Niles, IL 60714 USA

Phone 847-967-5151  
Toll Free 800-323-7660  
Fax 847-647-0948

SOLD TO \_\_\_\_\_ CUSTOMER NO. 101220

D.J. ENTERPRISES  
2519 MURRELL ROAD  
SANTA BARBARA, CA 93109

SHIPPING ADDRESS \_\_\_\_\_ TAX CODE TAXABLE  
D.J. ENTERPRISES  
2519 MURRELL ROAD  
SANTA BARBARA, CA 93109

REQUEST DATE (MM-DD-YY) 10-31-02 PROMISE DATE (MM-DD-YY) 10-31-02

OUR ORDER NO. 81215 ORDER DATE (MM-DD-YY) 10-03-02

YOUR ORDER NO. MICR10032002

TERMS 0.00/0/30

QUOTE # \_\_\_\_\_

F.O.B. ORIGIN

CODE 1167 (100.00)

VIA UPS

SPECIAL SHIPPING INSTRUCTIONS \_\_\_\_\_

*DN999-99C*

| LI  | PART NO.                         | DESCRIPTION   | QTY | DSCNT % | UNIT PRICE | AMOUNT      |             |
|---|----------------------------------|---|-----|---------|------------|-------------|-------------|
| 1   | DN-HO#14599<br><i>w.o.#12594</i> | DN_DNE31-T3C<br>IRCON INFRARAIL IRT SENSING HEAD ONLY<br>Consists of the following:<br>1.0000 - INFRARAIL HEAD ONLY<br>1.0000 - DN - E SERIES<br>1.0000 - D/100 RESOLUTION (E)<br>1.0000 - 800-1300C<br>DN_DNE31-13C<br><i>Redo Special No R726<br/>Temp range 1000-1700C<br/>Special Mini lead</i> | 1   | 0.00    | 2500.00    | 2500.00     |             |
| TAX   |                                  | Sales Tax @ 7.750%<br><i>Resale No tax</i>  | 1   | 0.00    | 193.75     | 193.75      |             |
| THIS ORDER IS ACCEPTED SUBJECT TO TERMS AND CONDITIONS SHOWN ON THIS AND THE REVERSE SIDE |                                  |   |     |         |            | GRAND TOTAL | USD2,693.75 |

SHIP TO: IRCON, INC.  
7300 N. NATCHEZ AVE.  
NILES, IL 60714 USA

IF TAX EXEMPT, PLEASE PROVIDE COPY OF EXEMPTION OR DIRECT PAYMENT CERTIFICATE.

*PA/B  
10/3*

BOM\*Number : DN#1647 - IRCON INFRARAIL IRT

SO-LI: 70970\*1

| Level | Part Number | Description               | Quantity | UM | Alt | MB X | ECO No. | ECO Date | Start Use | End Use |
|-------|-------------|---------------------------|----------|----|-----|------|---------|----------|-----------|---------|
| 1     | DNODNE      | DN PRICES                 | 1.0000   | EA |     | M P  |         |          |           |         |
| 1     | C11148      | SENSING HEAD FINAL ASSEMB | 1.0000   | EA |     | M P  |         |          |           |         |
| 2     | 447312      | S.H. MECH ASSY SPL#E724   | 1.0000   | EA |     | B    |         |          |           |         |
| 2     | 20081267D   | SCREW #8-32 X 3/8" SOCKET | 1.0000   | EA |     | B    |         |          |           |         |
| 2     | 611032      | LENS PLANO CONVEX 12.5MM  | 1.0000   | EA |     | B    |         |          |           |         |
| 2     | B11147      | DETECTOR ASSEMBLY         | 1.0000   | EA |     | M P  |         |          |           |         |
| 3     | 501743      | PCB DETECTOR SILICON SPEC | 1.0000   | EA |     | B    |         |          |           |         |
| 3     | 445172      | STANDOFF SWAGE 1/8OD X 3/ | 3.0000   | EA |     | B    |         |          |           |         |
| 3     | 410312      | SCREW #00-80 X 3/19 PAN H | 3.0000   | EA |     | B    |         |          |           |         |
| 3     | 432242      | PLASTIC SPACER .219" LONG | 1.0000   | EA |     | B    |         |          |           |         |
| 3     | 590532      | DET. SILCN MOD+/V/W/MAX/M | 1.0000   | EA |     | B    |         |          |           |         |
| 3     | 454122      | DET. FIELD STOP .030 DIA  | 1.0000   | EA |     | B    |         |          |           |         |
| 3     | 640482      | FILTER BANDPASS 0.7-1.0U  | 1.0000   | EA |     | B    |         |          |           |         |
| 3     | 990100002   | EPOXY HARDMAN #4005 GEN P | 1.0000   | EA |     | B    |         |          |           |         |
| 2     | 473752      | LABEL REIMAGING Z LENS    | 1.0000   | EA |     | B    |         |          |           |         |
| 2     | 990100002   | EPOXY HARDMAN #4005 GEN P | 1.0000   | EA |     | B    |         |          |           |         |
| 1     | D11198-R726 | INFRAIL CABLE             | 1.0000   | EA |     | M P  |         |          |           |         |
| 2     | 560052      | CABLE PVC 2 COND 1100/200 | 1.0000   | FT |     | B    | 3913    | 04-02-97 |           |         |
| 2     | 3212G00X0   | TUBING #12 PVC CLEAR      | 1.0000   | IN |     | B    | 3913    | 04-02-97 |           |         |
| 2     | 3216I1400   | TUBING 1/4" SHRINKABLE BL | 1.0000   | IN |     | B    | 3913    | 04-02-97 |           |         |
| 2     | C-CABLE     | DETERMINE CABLE LENGTH FR | 1.0000   | EA |     | M P  | 3913    | 04-02-97 |           |         |
| 2     | 477202      | LABEL INFRARAIL (2.0" X 0 | 1.0000   | EA |     | B    | 3913    | 04-02-97 |           |         |
| 1     | U-D11198-C  | 12 FEET OF CABLE          | 1.0000   | EA |     | M P  |         |          |           |         |
| 2     | 560052      | CABLE PVC 2 COND 1100/200 | 12.0000  | FT |     | B    |         |          |           |         |
| 1     | U-M1-R726   | MODULE ASSEMBLY - M1 -    | 1.0000   | EA |     | M P  |         |          |           |         |
| 2     | 102053011   | RES. 205K OHM MF 1/4W 1%  | 1.0000   | EA |     | B    |         |          |           |         |
| 2     | 101872011   | RES. 18.7K OHM MF 1/4W 1% | 1.0000   | EA |     | B    |         |          |           |         |
| 2     | 101303011   | RES. 130K OHM MF 1/4W 1%  | 1.0000   | EA |     | B    |         |          |           |         |
| 2     | 101272011   | RES. 12.7K OHM MF 1/4W 1% | 1.0000   | EA |     | B    |         |          |           |         |
| 2     | 105112011   | RES. 51.1K OHM MF 1/4W 1% | 1.0000   | EA |     | B    |         |          |           |         |
| 2     | 109311011   | RES. 9.31K OHM MF 1/4W 1% | 1.0000   | EA |     | B    |         |          |           |         |
| 2     | 107682011   | RES. 76.8K OHM MF 1/4W 1% | 1.0000   | EA |     | B    |         |          |           |         |
| 2     | 106651011   | RES. 6.65K OHM MF 1/4W 1% | 1.0000   | EA |     | B    |         |          |           |         |
| 2     | 101183011   | RES. 118K OHM MF 1/4W 1%  | 1.0000   | EA |     | B    |         |          |           |         |
| 2     | 104421011   | RES. 4.42K OHM MF 1/4W 1% | 1.0000   | EA |     | B    |         |          |           |         |
| 2     | 101823011   | RES. 182K OHM MF 1/4W 1%  | 1.0000   | EA |     | B    |         |          |           |         |
| 2     | 102941011   | RES. 2.94K OHM MF 1/4W 1% | 1.0000   | EA |     | B    |         |          |           |         |
| 2     | 102873011   | RES. 287K OHM MF 1/4W 1%  | 1.0000   | EA |     | B    |         |          |           |         |
| 2     | 101871011   | RES. 1.87K OHM MF 1/4W 1% | 1.0000   | EA |     | B    |         |          |           |         |
| 2     | 104643011   | RES. 464K OHM MF 1/4W 1%  | 1.0000   | EA |     | B    |         |          |           |         |
| 2     | 101181011   | RES. 1.18K OHM MF 1/4W 1% | 1.0000   | EA |     | B    |         |          |           |         |
| 2     | 107683011   | RES. 768K OHM MF 1/4W 1%  | 1.0000   | EA |     | B    |         |          |           |         |
| 2     | 106980011   | RES. 698 OHM MF 1/4W 1%   | 1.0000   | EA |     | B    |         |          |           |         |
| 2     | 109090011   | RES. 909 OHM MF 1/4W 1%   | 1.0000   | EA |     | B    |         |          |           |         |
| 2     | 101304011   | RES. 1.30M OHM MF 1/4W 1% | 1.0000   | EA |     | B    |         |          |           |         |
| 1     | NL13354     | NEW 'N'# FOR L13354       | 1.0000   | EA |     | M P  |         |          |           |         |
| 2     | L13354      | SH DETECTOR ASSEMBLY E-SE | 1.0000   | EA |     | M P  |         |          |           |         |
| 3     | 431432      | DET. HOLDER MR20 SERIES   | 1.0000   | EA |     | B    | 3770    | 08-21-96 |           |         |
| 3     | 640642      | FILTER, BANDPASS          | 1.0000   | EA |     | B    | 3770    | 08-21-96 |           |         |
| 3     | 590672      | DET. SI VACTEC 21D459     | 1.0000   | EA |     | B    | 3770    | 08-21-96 |           |         |
| 3     | 560372      | CABLE PVC 1 COND SHIELD 2 | 3.0000   | IN |     | B    | 3770    | 08-21-96 |           |         |

Omit NL13354

V.P. 6-29-99

SORRY!!

R726

BOM Number : DN#1647 - IRCON INFRARAIL IRT

SO-LI: 70970\*1

| Level | Part Number | Description               | Quantity | UM | Alt | MB X | ECO No. | ECO Date | StartUse | End Use |
|-------|-------------|---------------------------|----------|----|-----|------|---------|----------|----------|---------|
| 3     | 312430100   | WIRE 24AWG BARE SOLID     | 1.0000   | IN |     | B    | 3770    | 08-21-96 |          |         |
| 3     | 430292      | CONN. GASKET 2000 SERIES  | 1.0000   | EA |     | B    | 3770    | 08-21-96 |          |         |
| 3     | 575892      | CONN. CIRC 3 RECPT 10SL-3 | 1.0000   | EA |     | B    | 3770    | 08-21-96 |          |         |
| 3     | 490042      | SPRING DETECTOR RETAINER  | 1.0000   | EA |     | B    | 3770    | 08-21-96 |          |         |
| 3     | 630092      | FOLDING MIRROR SH MROA SE | 1.0000   | EA |     | B    | 3770    | 08-21-96 |          |         |
| 3     | 490032      | SPRING FOLDING MIRROR MOD | 1.0000   | EA |     | B    | 3770    | 08-21-96 |          |         |
| 3     | 200204130   | SCREW #2-56 X 1/8 BH SLOT | 1.0000   | EA |     | B    | 3770    | 08-21-96 |          |         |
| 3     | 990100016   | EPOXY HARDMAN #4001 3-5 M | 1.0000   | EA |     | B    | 3770    | 08-21-96 |          |         |
| 3     | 3214G00X0   | TUBING #14 PVC CLEAR      | 1.0000   | IN |     | B    | 3770    | 08-21-96 |          |         |
| 1     | D11191      | INFRARAIL BOX ASSEMBLY    | 1.0000   | EA |     | M P  |         |          |          |         |
| 2     | 433332      | ENCLOSURE, DIN BOX, MODIF | 1.0000   | EA |     | B    | 3671    | 04-08-96 |          |         |
| 2     | C11187      | POWER SUPPLY/ PEAK-PICKER | 1.0000   | EA |     | M P  | 3671    | 04-08-96 |          |         |
| 3     | C20212      | SCHEMATIC: POWER SUPPLY/  | 1.0000   | EA |     | M P  | 4202    | 01-14-99 |          |         |
| 3     | LDN200      | PWR SUPPLY/ PP PCB ASSY   | 1.0000   | EA |     | M P  | 4202    | 01-14-99 |          |         |
| 4     | 502505      | PCB DIN RAIL POWER PEAK-P | 1.0000   | EA |     | B    | 3769    | 08-05-96 |          |         |
| 4     | LDN200/01   | SEE EXTENDED DESCRIPTION  | 0.0000   | EA |     | M P  |         |          |          |         |
| 4     | 533082      | TRAN. MJE800 NPN - DARLIN | 1.0000   | EA |     | B    | 3769    | 08-05-96 |          |         |
| 4     | LDN200/02   | SEE EXTENDED DESCRIPTION  | 0.0000   | EA |     | M P  |         |          |          |         |
| 4     | LDN200/03   | SEE EXTENDED DESCRIPTION  | 0.0000   | EA |     | M P  |         |          |          |         |
| 4     | 530882      | DIODE 1N4002 GP RECTIFIER | 1.0000   | EA |     | B    | 3769    | 08-05-96 |          |         |
| 4     | 532952      | OP-AMP OP80GP ULTRA LOW B | 2.0000   | EA |     | B    | 3769    | 08-05-96 |          |         |
| 4     | 532322      | IC 4053B ANALOG MUX/DEMUX | 1.0000   | EA |     | B    | 3769    | 08-05-96 |          |         |
| 4     | 531862      | OP-AMP LM346N PROGRAM QUA | 1.0000   | EA |     | B    | 3769    | 08-05-96 |          |         |
| 4     | 102493011   | RES. 249K OHM MF 1/4W 1%  | 1.0000   | EA |     | B    | 3769    | 08-05-96 |          |         |
| 4     | 103321011   | RES. 3.32K OHM MF 1/4W 1% | 1.0000   | EA |     | B    | 3769    | 08-05-96 |          |         |
| 4     | 101820011   | RES. 182 OHM MF 1/4W 1%   | 1.0000   | EA |     | B    | 3769    | 08-05-96 |          |         |
| 4     | 104421011   | RES. 4.42K OHM MF 1/4W 1% | 1.0000   | EA |     | B    | 3769    | 08-05-96 |          |         |
| 4     | 106654011   | RES. 6.65M OHM MF 1/4W 1% | 1.0000   | EA |     | B    | 3769    | 08-05-96 |          |         |
| 4     | 104993011   | RES. 499K OHM MF 1/4W 1%  | 1.0000   | EA |     | B    | 3769    | 08-05-96 |          |         |
| 4     | 104021011   | RES. 4.02K OHM MF 1/4W 1% | 1.0000   | EA |     | B    | 3769    | 08-05-96 |          |         |
| 4     | 105364011   | RES. 5.36M OHM MF 1/4W 1% | 2.0000   | EA |     | B    | 3769    | 08-05-96 |          |         |
| 4     | 103480011   | RES. 348 OHM MF 1/4W 1%   | 1.0000   | EA |     | B    | 3769    | 08-05-96 |          |         |
| 4     | 100000990   | JUMPER DUMMY RESISTOR     | 4.0000   | EA |     | B    | 3769    | 08-05-96 |          |         |
| 4     | 101000011   | RES. 100 OHM MF 1/4W 1%   | 1.0000   | EA |     | B    | 3769    | 08-05-96 |          |         |
| 4     | 101003011   | RES. 100K OHM MF 1/4W 1%  | 1.0000   | EA |     | B    | 3769    | 08-05-96 |          |         |
| 4     | 101004011   | RES. 1.00M OHM MF 1/4W 1% | 4.0000   | EA |     | B    | 3769    | 08-05-96 |          |         |
| 4     | 102001011   | RES. 2.00K OHM MF 1/4W 1% | 1.0000   | EA |     | B    | 3769    | 08-05-96 |          |         |
| 4     | 102003011   | RES. 200K OHM MF 1/4W 1%  | 2.0000   | EA |     | B    | 3769    | 08-05-96 |          |         |
| 4     | 104991011   | RES. 4.99K OHM MF 1/4W 1% | 1.0000   | EA |     | B    | 3769    | 08-05-96 |          |         |
| 4     | 530572      | DIODE 1N4446 SWITCHING    | 2.0000   | EA |     | B    | 3769    | 08-05-96 |          |         |
| 4     | 530532      | DIODE FD300 GENERAL PURPO | 1.0000   | EA |     | B    | 3769    | 08-05-96 |          |         |
| 4     | 521852      | CAP. 0.68 MFD 50V CERAMIC | 1.0000   | EA |     | B    | 3769    | 08-05-96 |          |         |
| 4     | 521972      | CAP. .047 MFD 50V CER X7  | 1.0000   | EA |     | B    | 3769    | 08-05-96 |          |         |
| 4     | 521072      | CAP. 22MFD 16V TANT 10%   | 2.0000   | EA |     | B    | 3769    | 08-05-96 |          |         |
| 4     | 551122      | CHOKE 9250-122 1.2 UH, .1 | 2.0000   | EA |     | B    | 3769    | 08-05-96 |          |         |
| 4     | 521902      | CAP. NPO 1000pf 200V .2LS | 1.0000   | EA |     | B    | 3769    | 08-05-96 |          |         |
| 4     | 521862      | CAP. 3.3 MFD 50V CERAMC X | 1.0000   | EA |     | B    | 3769    | 08-05-96 |          |         |
| 4     | 521872      | CAP. 1.0 MFD 50V CERAMIC  | 5.0000   | EA |     | B    | 3769    | 08-05-96 |          |         |
| 4     | 522002      | CAP. .01 MFD 200V CERAMIC | 6.0000   | EA |     | B    | 3769    | 08-05-96 |          |         |
| 4     | 531892      | REG. LM317LZ +1.2/37V ADJ | 1.0000   | EA |     | B    | 3769    | 08-05-96 |          |         |
| 4     | 431902      | BIVAR PERMO PAD 0.250 DIA | 1.0000   | EA |     | B    | 3769    | 08-05-96 |          |         |

BOM Number : DN#1647 - IRCON INFRARAIL IRT

SO-LI: 70970\*1

| Level | Part Number | Description               | Quantity | UM | Alt. | MB X | ECO No. | ECO Date | StartUse | End Use. |
|-------|-------------|---------------------------|----------|----|------|------|---------|----------|----------|----------|
| 4     | 530862      | TRAN. 2N2222A NPN MED POW | 1.0000   | EA |      | B    | 3769    | 08-05-96 |          |          |
| 4     | 551152      | INDUCTOR 100UH +/-10% IMS | 2.0000   | EA |      | B    | 3769    | 08-05-96 |          |          |
| 4     | 531882      | DIODE LM385BZ-2.5 2.5V RE | 6.0000   | EA |      | B    | 3769    | 08-05-96 |          |          |
| 4     | 575602      | CONN. HDR AMP STRAIGHT 5  | 1.0000   | EA |      | B    | 3769    | 08-05-96 |          |          |
| 4     | 574592      | CONN. HDR AMP STRAIGHT 4  | 1.0000   | EA |      | B    | 3769    | 08-05-96 |          |          |
| 4     | LDN200/04   | SEE EXTENDED DESCRIPTION  | 0.0000   | EA |      | M P  |         |          |          |          |
| 4     | 572732      | HEADER SNGL 36 PIN .1 CNT | 11.0000  | EA |      | B    | 3769    | 08-05-96 |          |          |
| 4     | LDN200/05   | SEE EXTENDED DESCRIPTION  | 0.0000   | EA |      | M P  |         |          |          |          |
| 2     | C11186      | PREAMP/ LINEARIZER PCB AS | 1.0000   | EA |      | M P  | 3671    | 04-08-96 |          |          |
| 3     | C20211      | SCHEMATIC: PREAMP/ LINEAR | 1.0000   | EA |      | M P  | 3659    | 04-12-96 |          |          |
| 3     | LDN100      | PREAMP/ LIN PCB ASSY INFR | 1.0000   | EA |      | M P  | 3659    | 04-12-96 |          |          |
| 4     | 502493      | PCB DIN RAIL LINEARIZER   | 1.0000   | EA |      | B    | 3767    | 08-07-96 |          |          |
| 4     | LDN100/01   | SEE EXTENDED DESCRIPTION  | 0.0000   | EA |      | M P  |         |          |          |          |
| 4     | LDN100/02   | SEE EXTENDED DESCRIPTION  | 0.0000   | EA |      | M P  |         |          |          |          |
| 4     | 532982      | OP-AMP AD548CQ LOW PWR BI | 1.0000   | EA |      | B    | 3767    | 08-07-96 |          |          |
| 4     | 531862      | OP-AMP LM346N PROGRAM QUA | 2.0000   | EA |      | B    | 3767    | 08-07-96 |          |          |
| 4     | 532992      | OP-AMP OP490EY LOW VOLT Q | 1.0000   | EA |      | B    | 3767    | 08-07-96 |          |          |
| 4     | 530532      | DIODE FD300 GENERAL PURPO | 16.0000  | EA |      | B    | 3767    | 08-07-96 |          |          |
| 4     | 514632      | RES. 330K NETWORK 10 PIN  | 2.0000   | EA |      | B    | 3767    | 08-07-96 |          |          |
| 4     | 514642      | RES. 330K NETWORK 10 PIN  | 2.0000   | EA |      | B    | 3767    | 08-07-96 |          |          |
| 4     | 104533011   | RES. 453K OHM MF 1/4W 1%  | 1.0000   | EA |      | B    | 3767    | 08-07-96 |          |          |
| 4     | 1010R0011   | RES. 10.0 OHM MF 1/4W 1%  | 1.0000   | EA |      | B    | 3767    | 08-07-96 |          |          |
| 4     | 102743011   | RES. 274K OHM MF 1/4W 1%  | 1.0000   | EA |      | B    | 3767    | 08-07-96 |          |          |
| 4     | 102103011   | RES. 210K OHM MF 1/4W 1%  | 1.0000   | EA |      | B    | 3767    | 08-07-96 |          |          |
| 4     | 105364011   | RES. 5.36M OHM MF 1/4W 1% | 4.0000   | EA |      | B    | 3767    | 08-07-96 |          |          |
| 4     | 101002011   | RES. 10.0K OHM MF 1/4W 1% | 1.0000   | EA |      | B    | 3767    | 08-07-96 |          |          |
| 4     | 101003011   | RES. 100K OHM MF 1/4W 1%  | 1.0000   | EA |      | B    | 3767    | 08-07-96 |          |          |
| 4     | 102003011   | RES. 200K OHM MF 1/4W 1%  | 2.0000   | EA |      | B    | 3767    | 08-07-96 |          |          |
| 4     | 101000011   | RES. 100 OHM MF 1/4W 1%   | 2.0000   | EA |      | B    | 3767    | 08-07-96 |          |          |
| 4     | 100000990   | JUMPER DUMMY RESISTOR     | 1.0000   | EA |      | B    | 3767    | 08-07-96 |          |          |
| 4     | 551122      | CHOKE 9250-122 1.2 UH, .1 | 1.0000   | EA |      | B    | 3767    | 08-07-96 |          |          |
| 4     | 540412      | FERRITE BEAD ON LEAD AXIA | 3.0000   | EA |      | B    | 3767    | 08-07-96 |          |          |
| 4     | 522002      | CAP. .01 MFD 200V CERAMIC | 7.0000   | EA |      | B    | 3767    | 08-07-96 |          |          |
| 4     | 521902      | CAP. NPO 1000pf 200V .2LS | 2.0000   | EA |      | B    | 3767    | 08-07-96 |          |          |
| 4     | 521932      | CAP. 100 PF COG 200V      | 1.0000   | EA |      | B    | 3767    | 08-07-96 |          |          |
| 4     | 521962      | CAP. NPO 10pf 200V .2LS   | 2.0000   | EA |      | B    | 3767    | 08-07-96 |          |          |
| 4     | 514612      | POT. 50K 25T 1/2W 10%     | 1.0000   | EA |      | B    | 3767    | 08-07-96 |          |          |
| 4     | 514242      | POT. 25K OHM 25T 1/2W 10% | 1.0000   | EA |      | B    | 3767    | 08-07-96 |          |          |
| 4     | 514622      | POT. 100K 25T 1/2W 10%    | 1.0000   | EA |      | B    | 3767    | 08-07-96 |          |          |
| 4     | 574922      | CONN. HDR AMP STRAIGHT 3  | 1.0000   | EA |      | B    | 3767    | 08-07-96 |          |          |
| 4     | LDN100/03   | SEE EXTENDED DESCRIPTION  | 0.0000   | EA |      | M P  |         |          |          |          |
| 4     | 574432      | SOCKET 40 POS DIP .5HT EL | 1.0000   | EA |      | B    | 3767    | 08-07-96 |          |          |
| 4     | LDN100/04   | SEE EXTENDED DESCRIPTION  | 0.0000   | EA |      | M P  |         |          |          |          |
| 4     | 526002      | CAP. SMC 330PF NPO 50V 5% | 1.0000   | EA |      | B    | 3767    | 08-07-96 |          |          |
| 4     | 572732      | HEADER SNGL 36 PIN .1 CNT | 11.0000  | EA |      | B    | 3767    | 08-07-96 |          |          |
| 4     | LDN100/05   | SEE EXTENDED DESCRIPTION  | 0.0000   | EA |      | M P  |         |          |          |          |
| 2     | C11193      | PCB INTERCONNECT ASSEMBLY | 1.0000   | EA |      | M P  | 3671    | 04-08-96 |          |          |
| 3     | LDN300      | PCB INTERCONN ASSY (INFRA | 1.0000   | EA |      | M P  |         |          |          |          |
| 4     | 502533      | PCB DIN RAIL POWER PEAK-P | 1.0000   | EA |      | B    | 3721    | 08-01-96 |          |          |
| 4     | 575922      | CONN. FEMALE 11 POSITION  | 2.0000   | EA |      | B    | 3721    | 08-01-96 |          |          |
| 2     | 477112      | LABEL, COVER, DIN BOX     | 1.0000   | EA |      | B    | 3671    | 04-08-96 |          |          |

BOM Number : DN#1647 - IRCON INFRARAIL IRT

SO-LI: 70970\*1

| Level | Part Number | Description               | Quantity | UM | Alt. | MB | X | ECO No. | ECO Date | StartUse | End Use. |
|-------|-------------|---------------------------|----------|----|------|----|---|---------|----------|----------|----------|
| 2     | C11190      | DECAY RATE POT/ CONNECTOR | 1.0000   | EA |      | M  | P | 3671    | 04-08-96 |          |          |
| 3     | LDN003      | DECAY RATE POT/ CONN. ASS | 1.0000   | EA |      | M  | P | 4030    | 10-08-97 |          |          |
| 4     | 514592      | POT. 50K OHM 1T 1/2W 10%  | 1.0000   | EA |      | B  |   |         |          |          |          |
| 4     | LDN003/01   | SEE EXTENDED DESCRIPTION  | 0.0000   | EA |      | M  | P |         |          |          |          |
| 4     | 302479000   | WIRE 24AWG VIO/WHITE STRA | 1.0000   | IN |      | B  |   |         |          |          |          |
| 4     | 302409000   | WIRE 24AWG BLK/WHITE STRA | 1.0000   | IN |      | B  |   |         |          |          |          |
| 4     | 302459000   | WIRE 24AWG GRN/WHITE STRA | 1.0000   | IN |      | B  |   |         |          |          |          |
| 4     | 574662      | CONN. CONTACT 20-24 AWG C | 3.0000   | EA |      | B  |   |         |          |          |          |
| 4     | 574692      | CONN. HOUSING 5 POSITION- | 1.0000   | EA |      | B  |   |         |          |          |          |
| 2     | C11189      | RESPONSE TIME POT/ CONN   | 1.0000   | EA |      | M  | P | 3671    | 04-08-96 |          |          |
| 3     | LDN002      | RESP. TIME POT/ CONN. ASS | 1.0000   | EA |      | M  | P |         |          |          |          |
| 4     | 514602      | POT. 5M OHM 1T 1/2W 10% P | 1.0000   | EA |      | B  |   |         |          |          |          |
| 4     | 302440000   | WIRE 24AWG YEL/BLACK STRA | 1.0000   | IN |      | B  |   |         |          |          |          |
| 4     | 302409000   | WIRE 24AWG BLU/BLACK STRA | 1.0000   | IN |      | B  |   |         |          |          |          |
| 4     | 302430000   | WIRE 24AWG ORG/BLACK STRA | 1.0000   | IN |      | B  |   |         |          |          |          |
| 4     | 574662      | CONN. CONTACT 20-24 AWG C | 3.0000   | EA |      | B  |   |         |          |          |          |
| 4     | 574682      | CONN. HOUSING 4 POSITION- | 1.0000   | EA |      | B  |   |         |          |          |          |
| 2     | C11188      | EMISSIVITY POT/ CONNECTOR | 1.0000   | EA |      | M  | P | 3671    | 04-08-96 |          |          |
| 3     | LDN001      | EMISSIVITY POT/ CONN. ASS | 1.0000   | EA |      | M  | P | 3767    | 08-07-96 |          |          |
| 4     | 513722      | POT. 100K 2 DIGIT 1% DIGI | 1.0000   | EA |      | B  |   | 3767    | 08-07-96 |          |          |
| 4     | 30245X000   | WIRE 24AWG GREEN STRANDED | 1.0000   | IN |      | B  |   | 3767    | 08-07-96 |          |          |
| 4     | 30249X000   | WIRE 24AWG WHITE STRANDED | 1.0000   | IN |      | B  |   | 3767    | 08-07-96 |          |          |
| 4     | 30246X000   | WIRE 24AWG BLUE STRANDED  | 1.0000   | IN |      | B  |   | 3767    | 08-07-96 |          |          |
| 4     | 574662      | CONN. CONTACT 20-24 AWG C | 3.0000   | EA |      | B  |   | 3767    | 08-07-96 |          |          |
| 4     | 574672      | CONN. HOUSING 3 POSITION- | 1.0000   | EA |      | B  |   | 3767    | 08-07-96 |          |          |
| 4     | 477212      | LABEL - CLEAR WINDOW      | 1.0000   | EA |      | B  |   | 3767    | 08-07-96 |          |          |
| 2     | 575852      | KNOB, 9MM COLLET TYPE,    | 2.0000   | EA |      | B  |   | 3671    | 04-08-96 |          |          |
| 2     | 575872      | POINTER, 9MM COLLET TYPE  | 2.0000   | EA |      | B  |   | 3671    | 04-08-96 |          |          |
| 2     | 575862      | CAP. 9MM COLLET TYPE KNOB | 2.0000   | EA |      | B  |   | 3671    | 04-08-96 |          |          |
| 2     | C11194      | MODULE ASSEMBLY - M1 - (I | 1.0000   | EA |      | M  | P | 3671    | 04-08-96 |          |          |
| 3     | 573912      | HEADER 40 PIN DIP .6 CENT | 1.0000   | EA |      | B  |   |         |          |          |          |
| 3     | T-C11194-1  | SELECT "M1" MODULE VALUES | 0.0000   | EA |      | B  |   |         |          |          |          |
| 3     | T-C11194-3  | GT M1 MODULE VALUES       | 0.0000   | EA |      | B  |   |         |          |          |          |
| 2     | 575912      | CONN. KEYING ELEMENT (DN- | 2.0000   | EA |      | B  |   | 3671    | 04-08-96 |          |          |
| 2     | 477132      | LABEL, SERIAL NUMBER, DIN | 1.0000   | EA |      | B  |   | 3671    | 04-08-96 |          |          |
| 2     | 477122      | LABEL, DIN BOX, INFRARAIL | 1.0000   | EA |      | B  |   | 3671    | 04-08-96 |          |          |
| 2     | 574082      | TERM. BLOCK JUMPER QUICK  | 1.0000   | EA |      | B  |   | 3671    | 04-08-96 |          |          |
| 2     | LDNKIT      | MTG CLIP KIT FOR INFRARAI | 1.0000   | EA |      | M  | P | 3671    | 04-08-96 |          |          |
| 3     | 990300010   | CLIP MTG FOR DIN BOX      | 2.0000   | EA |      | B  |   | 3694    | 04-17-96 |          |          |
| 3     | LDNKIT/01   | SEE EXTENDED DESCRIPTION  | 0.0000   | EA |      | M  | P |         |          |          |          |
| 2     | 477182      | LABEL-CE MARK (PRODUCTS)  | 1.0000   | EA |      | B  |   | 3671    | 04-08-96 |          |          |

# Acknowledgment



IRCON, INC.  
7300 N. Natchez Ave.  
Niles, IL 60714 USA

Phone 847-967-5151  
Toll Free 800-323-7660  
Fax 847-647-0948

SOLD TO CUSTOMER NO. 101220  
D.J. ENTERPRISES  
2519 MURRELL ROAD  
SANTA BARBARA, CA 93109

SHIPPING ADDRESS TAX CODE NO TAX  
D.J. ENTERPRISES  
2519 MURRELL ROAD  
SANTA BARBARA, CA 93109

REQUEST DATE (MM-DD-YY) 10-31-02 PROMISE DATE (MM-DD-YY) 10-31-02  
OUR ORDER NO. 81215 ORDER DATE (MM-DD-YY) 10-03-02  
YOUR ORDER NO. MICR10032002  
TERMS 0.00/0/30  
QUOTE #  
F.O.B. ORIGIN  
CODE 1167 (100.00)  
VIA UPS  
SPECIAL SHIPPING INSTRUCTIONS

*DN999-99C*

| LI | PART NO.                         | DESCRIPTION  | QTY | DSCNT % | UNIT PRICE         | AMOUNT             |
|----|----------------------------------|--|-----|---------|--------------------|--------------------|
| 1  | DN-HO#14660<br><i>W.O.#12622</i> | DN_DNE31-13C<br>IRCON INFRARAIL IRT SENSING HEAD ONLY<br>Consists of the following:<br>1.0000 - INFRARAIL HEAD ONLY<br>1.0000 - DN - E SERIES<br>1.0000 - D/100 RESOLUTION (E)<br>1.0000 - 800-1300C<br>DN_DNE31-13C | 1   | 0.00    | 2500.00            | 2500.00            |
|    |                                  |  |     |         | <b>GRAND TOTAL</b> | <b>USD2,500.00</b> |

*Reds Special No R 726  
Temp range 1000 to 7000  
Special Mini loop  
PMB  
10/8*

THIS ORDER IS ACCEPTED SUBJECT TO TERMS AND CONDITIONS SHOWN ON THIS AND THE REVERSE SIDE

SHIP TO: IRCON, INC.  
7300 N. NATCHEZ AVE.  
NILES, IL 60714 USA

IF TAX EXEMPT, PLEASE PROVIDE COPY OF EXEMPTION OR DIRECT PAYMENT CERTIFICATE.

BOM Number : DN-HO#1715 - IRCON INFRARAIL IRT      SO-LI: 70970\*1

| .....Level..... | ..Part Number.. | .....Description.....     | .Quantity. | .UM. | Alt. | MB X | .ECO No. | ECO Date | StartUse | End Use. |
|-----------------|-----------------|---------------------------|------------|------|------|------|----------|----------|----------|----------|
|                 |                 |                           |            |      |      |      |          |          |          |          |
|                 |                 |                           |            |      |      |      |          |          |          | UM       |
| 1               | DN1DNE          | DN PRICES                 | 1.0000     | EA   |      | M P  |          |          |          |          |
| 1               | C11148          | SENSING HEAD FINAL ASSEMB | 1.0000     | EA   |      | M P  |          |          |          |          |
| 2               | 447312          | S.H. MECH ASSY SPL#E724   | 1.0000     | EA   |      | B    |          |          |          |          |
| 2               | 20081267D       | SCREW #8-32 X 3/8" SOCKET | 1.0000     | EA   |      | B    |          |          |          |          |
| 2               | 611032          | LENS PLANO CONVEX 12.5MM  | 1.0000     | EA   |      | B    |          |          |          |          |
| 2               | B11147          | DETECTOR ASSEMBLY         | 1.0000     | EA   |      | M P  |          |          |          |          |
| 3               | 501743          | PCB DETECTOR SILICON SPEC | 1.0000     | EA   |      | B    |          |          |          |          |
| 3               | 445172          | STANDOFF SWAGE 1/8OD X 3/ | 3.0000     | EA   |      | B    |          |          |          |          |
| 3               | 410312          | SCREW #00-80 X 3/19 PAN H | 3.0000     | EA   |      | B    |          |          |          |          |
| 3               | 432242          | PLASTIC SPACER .219" LONG | 1.0000     | EA   |      | B    |          |          |          |          |
| 3               | 590532          | DET. SILCN MOD+/V/W/MAX/M | 1.0000     | EA   |      | B    |          |          |          |          |
| 3               | 454122          | DET. FIELD STOP .030 DIA  | 1.0000     | EA   |      | B    |          |          |          |          |
| 3               | 640482          | FILTER BANDPASS 0.7-1.0U  | 1.0000     | EA   |      | B    |          |          |          |          |
| 3               | 990100002       | EPOXY HARDMAN #4005 GEN P | 1.0000     | EA   |      | B    |          |          |          |          |
| 2               | 473752          | LABEL REIMAGING Z LENS    | 1.0000     | EA   |      | B    |          |          |          |          |
| 2               | 990100002       | EPOXY HARDMAN #4005 GEN P | 1.0000     | EA   |      | B    |          |          |          |          |

R726  
 HEAD only

W.O.#12622

Number :DN-HO#14660 - IRCON INFRARAIL IRT SO-LI: 81215\*1

| .....Level..... | ..Part Number.. | .....Description.....     | .Quantity. | .UM. | Alt. | MB X | .ECO No. | .ECO Date. | .Start Use | .End Use.. |
|-----------------|-----------------|---------------------------|------------|------|------|------|----------|------------|------------|------------|
|                 |                 |                           |            |      |      | UM   |          |            |            |            |
| 1               | DN1DNE          | DN PRICES                 | 1.0000     | EA   |      | M P  |          |            |            |            |
| 1               | C11148          | SENSING HEAD FINAL ASSEMB | 1.0000     | EA   |      | M P  |          |            |            |            |
| 2               | 447312          | S.H. MECH ASSY SPL#E724   | 1.0000     | EA   |      | B    |          |            |            |            |
| 2               | 20081267D       | SCREW #8-32 X 3/8" SOCKET | 1.0000     | EA   |      | B    |          |            |            |            |
| 2               | 611032          | LENS PLANO CONVEX 12.5MM  | 1.0000     | EA   |      | B    |          |            |            |            |
| 2               | B11147          | DETECTOR ASSEMBLY         | 1.0000     | EA   |      | M P  |          |            |            |            |
| 3               | 501743          | PCB DETECTOR SILICON SPEC | 1.0000     | EA   |      | B    |          |            |            |            |
| 3               | 445172          | STANDOFF SWAGE 1/8OD X 3/ | 3.0000     | EA   |      | B    |          |            |            |            |
| 3               | 410312          | SCREW #00-80 X 3/19 PAN H | 3.0000     | EA   |      | B    |          |            |            |            |
| 3               | 432242          | PLASTIC SPACER .219" LONG | 1.0000     | EA   |      | B    |          |            |            |            |
| 3               | 590532          | DET. SILCN MOD+/V/W/MAX/M | 1.0000     | EA   |      | B    |          |            |            |            |
| 3               | 454122          | DET. FIELD STOP .030 DIA  | 1.0000     | EA   |      | B    |          |            |            |            |
| 3               | 640482          | FILTER BANDPASS 0.7-1.0U  | 1.0000     | EA   |      | B    |          |            |            |            |
| 3               | 990100002       | EPOXY HARDMAN #4005 GEN P | 1.0000     | EA   |      | B    |          |            |            |            |
| 2               | 473752          | LABEL REIMAGING Z LENS    | 1.0000     | EA   |      | B    |          |            |            |            |
| 2               | 990100002       | EPOXY HARDMAN #4005 GEN P | 1.0000     | EA   |      | B    |          |            |            |            |

R 726 (Sensor Only)

# Acknowledgment



IRCON, INC.  
7300 N. Natchez Ave.  
Niles, IL 60714 USA

Phone 847-967-5151  
Toll Free 800-323-7660  
Fax 847-647-0948

SOLD TO \_\_\_\_\_ CUSTOMER NO. 101308

BULLEN ULTRASONICS, INC.  
950 S. FRANKLIN STREET  
EATON, OH 45320

SHIPPING ADDRESS \_\_\_\_\_ TAX CODE NO TAX

BULLEN ULTRASONICS, INC.  
950 S. FRANKLIN STREET  
ATTN: STUART MUELLER  
EATON, OH 45320

REQUEST DATE (MM-DD-YY) 02-07-03 PROMISE DATE (MM-DD-YY) 02-07-03

OUR ORDER NO. 81854 ORDER DATE (MM-DD-YY) 01-10-03

YOUR ORDER NO. SM3-011

TERMS 0.00/0/30

QUOTE # \_\_\_\_\_

F.O.B. ORIGIN

CODE 1003 (100.00)

VIA UPS

SPECIAL SHIPPING INSTRUCTIONS \_\_\_\_\_

*DNE99-99C*

| LI   | PART NO.                          | DESCRIPTION  | QTY | DSCNT % | UNIT PRICE | AMOUNT                  |
|--|-----------------------------------|--|-----|---------|------------|-------------------------|
| 1  | DN-HO#15481<br><i>w.o.# 13167</i> | DN_DNE31-13C<br>IRCON INFRARAIL IRT SENSING HEAD ONLY<br>Consists of the following:<br>1.0000 - INFRARAIL HEAD ONLY<br>1.0000 - DN - E SERIES<br>1.0000 - D/100 RESOLUTION (E)<br>1.0000 - 800-1300C<br>DN_DNE31-13C | 1   | 0.00    | 2500.00    | 2500.00                 |
| <p><i>Reds Special No R726</i><br/><i>Temp range 1000-1700C</i><br/><i>PTB</i><br/><i>1/10</i></p> |                                   |  |     |         |            |                         |
| THIS ORDER IS ACCEPTED SUBJECT TO TERMS AND CONDITIONS SHOWN ON THIS AND THE REVERSE SIDE          |                                   |  |     |         |            | GRAND TOTAL USD2,500.00 |

SHIP TO: IRCON, INC.  
7300 N. NATCHEZ AVE.  
NILES, IL 60714 USA

IF TAX EXEMPT, PLEASE PROVIDE COPY OF EXEMPTION OR DIRECT PAYMENT CERTIFICATE.

W.O. 13167

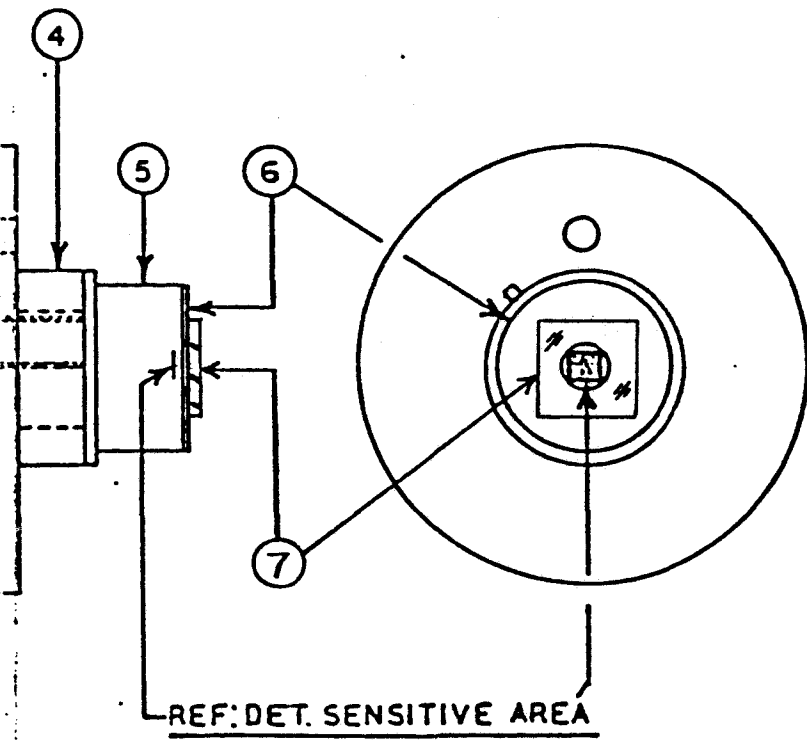
Number :DN-HO#15481 - IRCON INFRARAIL IRT SO-LI: 81854\*1

| Level | Part Number | Description               | Quantity | UM | Alt. | MB X | ECO No. | ECO Date | Start Use | End Use |
|-------|-------------|---------------------------|----------|----|------|------|---------|----------|-----------|---------|
| 1     | DN1DNE      | DN PRICES                 | 1.0000   | EA |      | M P  |         |          |           |         |
| 1     | C11148      | SENSING HEAD FINAL ASSEMB | 1.0000   | EA |      | M P  |         |          |           |         |
| 2     | 447312      | S.H. MECH ASSY SPL#E724   | 1.0000   | EA |      | B    |         |          |           |         |
| 2     | 20081267D   | SCREW #8-32 X 3/8" SOCKET | 1.0000   | EA |      | B    |         |          |           |         |
| 2     | 611032      | LENS PLANO CONVEX 12.5MM  | 1.0000   | EA |      | B    |         |          |           |         |
| 2     | B11147      | DETECTOR ASSEMBLY         | 1.0000   | EA |      | M P  |         |          |           |         |
| 3     | 501743      | PCB DETECTOR SILICON SPEC | 1.0000   | EA |      | B    |         |          |           |         |
| 3     | 445172      | STANDOFF SWAGE 1/8OD X 3/ | 3.0000   | EA |      | B    |         |          |           |         |
| 3     | 410312      | SCREW #00-80 X 3/19 PAN H | 3.0000   | EA |      | B    |         |          |           |         |
| 3     | 432242      | PLASTIC SPACER .219" LONG | 1.0000   | EA |      | B    |         |          |           |         |
| 3     | 590532      | DET. SILCN MOD+/V/W/MAX/M | 1.0000   | EA |      | B    |         |          |           |         |
| 3     | 454122      | DET. FIELD STOP .030 DIA  | 1.0000   | EA |      | B    |         |          |           |         |
| 3     | 640482      | FILTER BANDPASS 0.7-1.0U  | 1.0000   | EA |      | B    |         |          |           |         |
| 3     | 990100002   | EPOXY HARDMAN #4005 GEN P | 1.0000   | EA |      | B    |         |          |           |         |
| 2     | 473752      | LABEL REIMAGING Z LENS    | 1.0000   | EA |      | B    |         |          |           |         |
| 2     | 990100002   | EPOXY HARDMAN #4005 GEN P | 1.0000   | EA |      | B    |         |          |           |         |

R726 (Sensor Only)

DRAWING NO. **B-11147** REV. **B**

| REVISION |  |                 |
|----------|--|-----------------|
| LTR.     | DESCRIPTION  | BY/DATE         |
| A        | SPECIAL RELEASE                                    | 5/5/95<br>J.L.  |
| B        | REVISED NOTE #3.<br>DO NOT EPOXY ITEMS<br>TOGETHER | 9-25-95<br>J.L. |



ALIGN THE FIELDSTOP (ITEM 6) SO IT IS CENTERED OVER THE SENSITIVE AREA OF THE DETECTOR (ITEM 5) AND EPOXY IT IN PLACE.

ALIGN THE FILTER (ITEM 7) OVER THE OPENING OF THE FIELDSTOP (ITEM 6) AND EPOXY IT IN PLACE.

THIS DOCUMENT IS THE PROPRIETARY PROPERTY OF SQUARE D COMPANY AND IS NOT PART OF THE PUBLIC DOMAIN. IT IS ISSUED WITH NO EXPRESS WARRANTIES AND AGREEMENT THAT IT IS NOT TO BE REPRODUCED OR COPIED IN WHOLE OR IN PART OR USED FOR FURNISHING INFORMATION TO OTHERS OR USED IN ANY MANNER OR FOR ANY PURPOSE THAT IS UNLAWFUL TO THE INTEREST OF SQUARE D COMPANY. IT IS TO BE RETURNED UPON REQUEST BY SQUARE D COMPANY. ALL RIGHTS RESERVED.

DO NOT SCALE

SHEET #

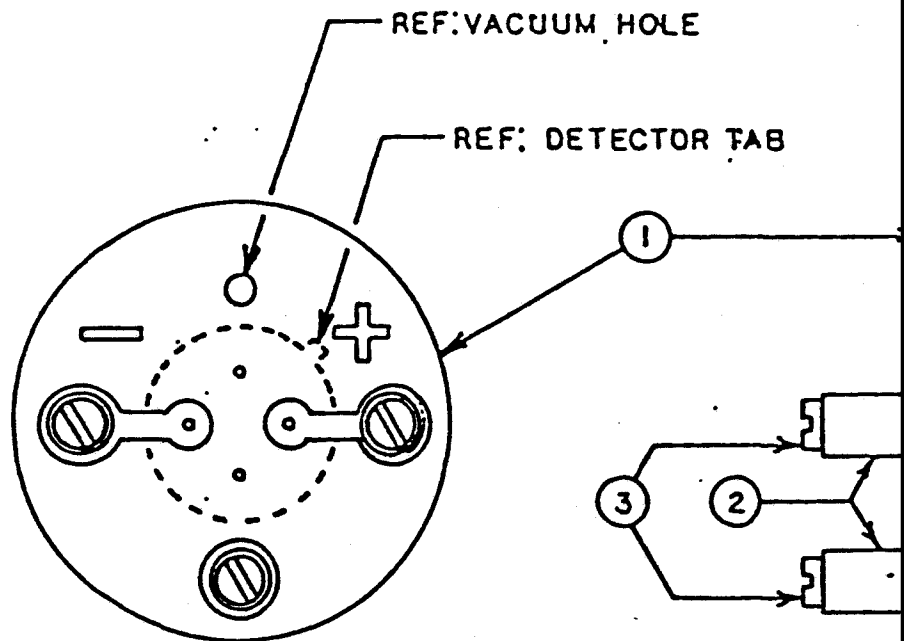
|             |        |
|-------------|--------|
| DESIGNED BY | DATE   |
| L.          | 5/5/95 |
| APPROVED    | DATE   |
|             |        |

**SQUARE D COMPANY**  
INFRARED MEASUREMENT DIVISION  
MILES, ILLINOIS 60648

MANUFACTURER OF  
**IRCON**  
PRODUCTS

TITLE  
**DETECTOR ASSEMBLY**  
(SPECIAL NO. \*E724 )

DRAWING NO. **B-11147** REV. **B**



**NOTES:**

1. STAKE ITEM 2 TO ITEM 1 USING INTN'L EYELETS INC. ROLL SETTING TOOL NO. FR-90 OR EQUIVALENT.
2. SOLDER ITEM 2 TO THE FOIL OF ITEM 1.
3. SLEEVE THE DETECTOR WITH ITEM 4 THEN, INSERT THE LEADS INTO THE BOARD. SOLDER THE LEADS TO THE P.C. BOARD

ALL DIMENSIONS ARE IN INCHES UNLESS OTHERWISE

|          |    |
|----------|----|
| MATERIAL | CH |
|          | U  |
|          | AP |
|          | S  |

**DRAWING(S) TOO LARGE  
TO SCAN.**

**TO VIEW THE ORIGINAL  
DESIGN,**

**A REQUEST TO VIEW  
PHYSICAL FILE  
IS YOUR NEXT OPTION.**

# Acknowledgment



IRCON, INC.  
7300 N. Natchez Ave.  
Niles, IL 60714 USA

Phone 847-967-5151  
Toll Free 800-323-7660  
Fax 847-647-0948

SOLD TO \_\_\_\_\_ CUSTOMER NO. 017788

SUNTOWN & COMPANY  
P. O. BOX 26-666  
ATTN: JOHN STONE  
TAIPEI,  
TAIWAN R.O.C.

SHIPPING ADDRESS \_\_\_\_\_ TAX CODE NO TAX

SUNTOWN & COMPANY  
C/O PRIORITY FREIGHT CORP  
1209 GRANDVIEW DRIVE  
ATTN: BERNARD LIU  
S SAN FRANCISCO, CA 94080

*DN999-99c*

REQUEST DATE (MM-DD-YY) 04-18-03 PROMISE DATE (MM-DD-YY) 04-18-03

OUR ORDER NO. 82440 ORDER DATE (MM-DD-YY) 04-01-03

YOUR ORDER NO. POI-920328

TERMS 0.00/0/60

QUOTE # \_\_\_\_\_

F.O.B. ORIGIN

CODE 1059 (100.00)

VIA UPS

SPECIAL SHIPPING INSTRUCTIONS \_\_\_\_\_

| LI  | PART NO.                         | DESCRIPTION   | QTY | DSCNT % | UNIT PRICE | AMOUNT             |
|---|----------------------------------|---|-----|---------|------------|--------------------|
| 1   | DN-HO#16329<br><i>W.O.#13647</i> | DN_DNE31-13C<br>IRCON INFRARAIL IRT<br>SENSING HEAD ONLY<br>Consists of the following:<br>1.0000 - INFRARAIL HEAD ONLY<br>1.0000 - DN - E SERIES<br>1.0000 - D/100 RESOLUTION (E)<br>1.0000 - 800-1300C<br>DN_DNE31-13C | 2   | 0.00    | 2125.00    | 4250.00            |
| <i>Red Spec No R726</i><br><i>Special Mini Head</i><br><i>Temp range 1000-1700c</i><br><i>Ref 4/1</i> |                                  |   |     |         |            |                    |
| <b>GRAND TOTAL</b>  |                                  |   |     |         |            | <b>USD4,250.00</b> |

THIS ORDER IS ACCEPTED SUBJECT TO TERMS AND CONDITIONS SHOWN ON THIS AND THE REVERSE SIDE

SHIP TO: IRCON, INC.  
7300 N. NATCHEZ AVE.  
NILES, IL 60714 USA

IF TAX EXEMPT, PLEASE PROVIDE COPY OF EXEMPTION OR DIRECT PAYMENT CERTIFICATE.



IRCON, INC.  
7300 North Natchez Avenue  
Niles, Illinois 60714 USA

Telephone 847-967-5151  
Toll Free 800-323-7660  
Fax 847-647-0948

ISO 9001/QS 9000 TE  
Quality Systems Certified

**Modified Standard Product  
Data Form**

*A modified standard product is a product that is based on a standard product found in the most recent price list. The modifications maybe items such as; temperature ranges, output types, resolution, response time and optical issues. A modified standard product form is to be completed and submitted to Steve Schumm and Gene Kalley for review and approval based on the modification (which we have done before). If the modification has not been done before, the approval will require the entire senior management team's approval BEFORE QUOTING. A modified standard product if approved; this product will become a price listed standard product. We can then pay commission as outlined in our most recent contract.*

➤ Standard Product is a Model Number: DNE31-13C

➤ Standard Product List Price: \$ 900

➤ The product change requested would be: Red Special R726

Spec Head, 1000-1700C

*Sales will attach specifics to this form.*

➤ The market is willing to pay \$ 2125 for this product (total including standard price).

➤ What is engineering's expected time investment and cost: 1 HOUR Man Days  
\$ 100<sup>00</sup>

➤ What is production's expected purchasing and production time requirement:      Days

➤ This new product has potential in the following application and estimated potential per year would be      per year:

➤ This product will be  not be  quoted and produced as previously outlined.

➤ Agreed on this date of      By production/purchasing     

By engineering A. DONADO 4/1/03

➤ Sales can now quote this project for \$      per unit.

W.O. # 1364

     lead time.

     Add to standard product list in literature (Maxine)

     Add to price list (Vern)

cc/ Greg P, Paul V, Regional Sales Staff Globally

W.O.#

Number :DN-HO#16329 - IRCON INFRARAIL IRT SO-LI: 82440\*1

| Level | Part Number | Description               | Quantity | UM | Alt | MB | X | ECO No. | ECO Date | Start Use | End Use |
|-------|-------------|---------------------------|----------|----|-----|----|---|---------|----------|-----------|---------|
| 1     | DN1DNE      | DN PRICES                 | 1.0000   | EA |     | M  | P |         |          |           |         |
| 1     | C11148      | SENSING HEAD FINAL ASSEMB | 1.0000   | EA |     | M  | P |         |          |           |         |
| 2     | 447312      | S.H. MECH ASSY SPL#E724   | 1.0000   | EA |     | B  |   |         |          |           |         |
| 2     | 20081267D   | SCREW #8-32 X 3/8" SOCKET | 1.0000   | EA |     | B  |   |         |          |           |         |
| 2     | 611032      | LENS PLANO CONVEX 12.5MM  | 1.0000   | EA |     | B  |   |         |          |           |         |
| 2     | B11147      | DETECTOR ASSEMBLY         | 1.0000   | EA |     | M  | P |         |          |           |         |
| 3     | 501743      | PCB DETECTOR SILICON SPEC | 1.0000   | EA |     | B  |   |         |          |           |         |
| 3     | 445172      | STANDOFF SWAGE 1/80D X 3/ | 3.0000   | EA |     | B  |   |         |          |           |         |
| 3     | 410312      | SCREW #00-80 X 3/19 PAN H | 3.0000   | EA |     | B  |   |         |          |           |         |
| 3     | 432242      | PLASTIC SPACER .219" LONG | 1.0000   | EA |     | B  |   |         |          |           |         |
| 3     | 590532      | DET. SILCN MOD+/V/W/MAX/M | 1.0000   | EA |     | B  |   |         |          |           |         |
| 3     | 454122      | DET. FIELD STOP .030 DIA  | 1.0000   | EA |     | B  |   |         |          |           |         |
| 3     | 640482      | FILTER BANDPASS 0.7-1.0U  | 1.0000   | EA |     | B  |   |         |          |           |         |
| 3     | 990100002   | EPOXY HARDMAN #4005 GEN P | 1.0000   | EA |     | B  |   |         |          |           |         |
| 2     | 473752      | LABEL REIMAGING Z LENS    | 1.0000   | EA |     | B  |   |         |          |           |         |
| 2     | 990100002   | EPOXY HARDMAN #4005 GEN P | 1.0000   | EA |     | B  |   |         |          |           |         |

R726  
(Sensor Only)

|   |           |                           |        |    |   |   |
|---|-----------|---------------------------|--------|----|---|---|
| 1 | DN1DNE    | DN PRICES                 | 1.0000 | EA | M | P |
| 1 | C11148    | SENSING HEAD FINAL ASSEMB | 1.0000 | EA | M | P |
| 2 | 447312    | S.H. MECH ASSY SPL#E724   | 1.0000 | EA | B |   |
| 2 | 20081267D | SCREW #8-32 X 3/8" SOCKET | 1.0000 | EA | B |   |
| 2 | 611032    | LENS PLANO CONVEX 12.5MM  | 1.0000 | EA | B |   |
| 2 | B11147    | DETECTOR ASSEMBLY         | 1.0000 | EA | M | P |
| 3 | 501743    | PCB DETECTOR SILICON SPEC | 1.0000 | EA | B |   |
| 3 | 445172    | STANDOFF SWAGE 1/80D X 3/ | 3.0000 | EA | B |   |
| 3 | 410312    | SCREW #00-80 X 3/19 PAN H | 3.0000 | EA | B |   |
| 3 | 432242    | PLASTIC SPACER .219" LONG | 1.0000 | EA | B |   |
| 3 | 590532    | DET. SILCN MOD+/V/W/MAX/M | 1.0000 | EA | B |   |
| 3 | 454122    | DET. FIELD STOP .030 DIA  | 1.0000 | EA | B |   |
| 3 | 640482    | FILTER BANDPASS 0.7-1.0U  | 1.0000 | EA | B |   |
| 3 | 990100002 | EPOXY HARDMAN #4005 GEN P | 1.0000 | EA | B |   |
| 2 | 473752    | LABEL REIMAGING Z LENS    | 1.0000 | EA | B |   |
| 2 | 990100002 | EPOXY HARDMAN #4005 GEN P | 1.0000 | EA | B |   |

Proprietary and Confidential to IRCON INC

*A300*

# Acknowledgment



IRCON, INC.  
7300 N. Natchez Ave.  
Niles, IL 60714 USA

Phone 847-967-5151  
Toll Free 800-323-7660  
Fax 847-647-0948

REQUEST DATE (MM-DD-YY)  
**07-30-04**

PROMISE DATE (MM-DD-YY)  
**07-30-04**

OUR ORDER NO.  
**85863**

ORDER DATE (MM-DD-YY)  
**07-08-04**

YOUR ORDER NO.

**POI-903708(B)**

TERMS

**0.00/0/30**

QUOTE #

F.O.B.

**ORIGIN**

CODE

**1059 (100.00)**

VIA

**UPS INTL**

SPECIAL SHIPPING INSTRUCTIONS

SOLD TO

CUSTOMER NO.

**017788**

SUNTOWN & COMPANY  
P. O. BOX 26-666  
ATTN: JOHN STONE  
TAIPEI,  
TAIWAN R.O.C.

SHIPPING ADDRESS

TAX CODE  
**NO TAX**

SUNTOWN & COMPANY  
11TH FL 49-1 HOPING E AVE  
SEC. 2  
TAIPEI,  
TAIWAN, R.O.C.

*DN 999-99C*

| LI  | PART NO.                          | DESCRIPTION   | QTY | DSCNT % | UNIT PRICE         | AMOUNT  |
|---|-----------------------------------|---|-----|---------|--------------------|---------|
| 1   | DN-HO#21736<br><i>w.o. #16681</i> | DN_DNE31-13C<br>IRCON INFRARAIL IRT<br>SENSING HEAD ONLY<br>Consists of the following:<br>1.0000 - INFRARAIL HEAD ONLY<br>1.0000 - DN - E SERIES<br>1.0000 - D/100 RESOLUTION (E)<br>1.0000 - 800-1300C<br>DN_DNE31-13C | 1   | 0.00    | 2000.00            | 2000.00 |
| 2   | RT#21727                          | RT-440-06C-3<br>IRCON MINIRT<br>SYSTEM-COMLETE<br>Consists of the following:<br>1.0000 - MINI RT UNIT<br>1.0000 - 8-14 MICRONS<br>1.0000 - 0-600C<br>1.0000 - D/10 RES<br>RT-440-06C-3                                  | 2   | 0.00    | 319.20             | 638.40  |
| 3   | WA-3                              | WATER COOLING ACCESSORY   | 7   | 0.00    | 100.00             | 700.00  |
| 4   | AA-3                              | AIR PURGE ACCESSORY   | 7   | 0.00    | 100.00             | 700.00  |
| MUST SHIP WITH RMA# 10987   |                                   |   |     |         |                    |         |
| THIS ORDER IS ACCEPTED SUBJECT TO TERMS AND CONDITIONS SHOWN ON THIS AND THE REVERSE SIDE |                                   |   |     |         | <b>GRAND TOTAL</b> |         |

SHIP TO: IRCON, INC.  
7300 N. NATCHEZ AVE.  
NILES, IL 60714 USA

IF TAX EXEMPT, PLEASE PROVIDE COPY OF  
EXEMPTION OR DIRECT PAYMENT CERTIFICATE.



IRCON, INC.  
7300 North Natchez Avenue  
Niles, Illinois 60714 USA

Telephone 847-967-5151  
Toll Free 800-323-7660  
Fax 847-647-0948

ISO 9001/QS 9000 TE  
Quality Systems Certified

**Modified Standard Product**  
**Data Form**

*A modified standard product is a product that is based on a standard product found in the most recent price list. The modifications maybe items such as; temperature ranges, output types, resolution, response time and optical issues. A modified standard product form is to be completed and submitted to Steve Schumm and Gene Kalley for review and approval based on the modification (which we have done before). If the modification has not been done before, the approval will require the entire senior management team's approval BEFORE QUOTING. A modified standard product if approved; this product will become a price listed standard product. We can then pay commission as outlined in our most recent contract.*

- Standard Product is a Model Number: ONEB1-13C
  - Standard Product List Price: \$ 940
  - The product change requested would be: Kodo Spz RT26  
1000-1700 C      Sales will attach specifics to this form.
  - The market is willing to pay \$2000 for this product (total including standard price).
  - What is engineering's expected time investment and cost: 1 HOUR Man Days  
\$ 100.00
  - What is production's expected purchasing and production time requirement: \_\_\_\_\_ Days
  - This new product has potential in the following application and estimated potential per year would be \_\_\_\_\_ per year.
- 
- This product will be  not be \_\_\_\_\_ quoted and produced as previously outlined.
  - Agreed on this date of \_\_\_\_\_ By production/purchasing \_\_\_\_\_  
By engineering A. DONADO 7/14/04
  - Sales can now quote this project for \$ \_\_\_\_\_ per unit. W.O.# 16681  
\_\_\_\_\_ lead time.

\_\_\_\_\_ Add to standard product list in literature (Maxine)  
\_\_\_\_\_ Add to price list (Vern)  
cc/ Greg P, Paul V, Regional Sales Staff Globally

W.O.# 16681

Number :DN-HO#21736 - IRCON INFRARAIL IRT SO-LI: 85863\*1

| Level | Part Number | Description               | Quantity | UM | Alt | MB | X | ECO No. | ECO Date | Start Use | End Use |
|-------|-------------|---------------------------|----------|----|-----|----|---|---------|----------|-----------|---------|
| 1     | DN1DNE      | DN PRICES                 | 1.0000   | EA |     |    |   |         |          |           |         |
| 1     | C11148      | SENSING HEAD FINAL ASSEMB | 1.0000   | EA |     |    |   |         |          |           |         |
| 2     | 447312      | S.H. MECH ASSY SPL#E724   | 1.0000   | EA |     |    |   |         |          |           |         |
| 2     | 20081267D   | SCREW #8-32 X 3/8" SOCKET | 1.0000   | EA |     |    |   |         |          |           |         |
| 2     | 611032      | LENS PLANO CONVEX 12.5MM  | 1.0000   | EA |     |    |   |         |          |           |         |
| 2     | B11147      | DETECTOR ASSEMBLY         | 1.0000   | EA |     |    |   |         |          |           |         |
| 3     | 501743      | PCB DETECTOR SILICON SPEC | 1.0000   | EA |     |    |   |         |          |           |         |
| 3     | 445172      | STANDOFF SWAGE 1/8OD X 3/ | 3.0000   | EA |     |    |   |         |          |           |         |
| 3     | 410312      | SCREW #00-80 X 3/19 PAN H | 3.0000   | EA |     |    |   |         |          |           |         |
| 3     | 432242      | PLASTIC SPACER .219" LONG | 1.0000   | EA |     |    |   |         |          |           |         |
| 3     | 590532      | DET. SILCN MOD+/V/W/MAX/M | 1.0000   | EA |     |    |   |         |          |           |         |
| 3     | 454122      | DET. FIELD STOP .030 DIA  | 1.0000   | EA |     |    |   |         |          |           |         |
| 3     | 640482      | FILTER BANDPASS 0.7-1.0U  | 1.0000   | EA |     |    |   |         |          |           |         |
| 3     | 990100002   | EPOXY HARDMAN #4005 GEN P | 1.0000   | EA |     |    |   |         |          |           |         |
| 2     | 473752      | LABEL REIMAGING Z LENS    | 1.0000   | EA |     |    |   |         |          |           |         |
| 2     | 990100002   | EPOXY HARDMAN #4005 GEN P | 1.0000   | EA |     |    |   |         |          |           |         |

R726 (sensor Only)



IRCON, INC.  
7300 North Natchez Avenue  
Niles, Illinois 60714 USA

Telephone 847-967-5151  
Toll Free 800-323-7660  
Fax 847-647-0948

ISO 9001/QS 9000 TE  
Quality Systems Certified

**Modified Standard Product**  
**Data Form**

*A modified standard product is a product that is based on a standard product found in the most recent price list. The modifications maybe items such as; temperature ranges, output types, resolution, response time and optical issues. A modified standard product form is to be completed and submitted to Steve Schumm and Gene Kalley for review and approval based on the modification (which we have done before). If the modification has not been done before, the approval will require the entire senior management team's approval BEFORE QUOTING. A modified standard product if approved; this product will become a price listed standard product. We can then pay commission as outlined in our most recent contract.*

- Standard Product is a Model Number: DNE31-13C
- Standard Product List Price: \$1000
- The product change requested would be: Reels ~~to~~ R1726  
1000-1700C *Sales will attach specifics to this form.*
- The market is willing to pay: \$2500 for this product (total including standard price).
- What is engineering's expected time investment and cost: 1 hour Man Days  
\$400.00
- What is production's expected purchasing and production time requirement: \_\_\_\_\_ Days
- This new product has potential in the following application and estimated potential per year would be \_\_\_\_\_ per year:

---

- This product will be  not be \_\_\_\_\_ quoted and produced as previously outlined.
- Agreed on this date of \_\_\_\_\_ By production/purchasing \_\_\_\_\_  
By engineering A. DONADO
- Sales can now quote this project for \$ \_\_\_\_\_ per unit. W.O.A 17124  
\_\_\_\_\_ lead time.

\_\_\_\_ Add to standard product list in literature (Maxine)  
\_\_\_\_ Add to price list (Vern)  
cc/ Greg P, Paul V, Regional Sales Staff Globally

# Acknowledgment



IRCON, INC.  
7300 N. Natchez Ave.  
Niles, IL 60714 USA

Phone 847-967-5151  
Toll Free 800-323-7660  
Fax 847-647-0948

SOLD TO \_\_\_\_\_ CUSTOMER NO. 009013

KAYEX TECHNICAL CENTER  
1000 MILLSTEAD WAY  
ROCHESTER, NY 14624

SHIPPING ADDRESS \_\_\_\_\_ TAX CODE NO TAX

KAYEX TECHNICAL CENTER  
1000 MILLSTEAD WAY  
ROCHESTER, NY 14624

REQUEST DATE (MM-DD-YY) 10-06-04 PROMISE DATE (MM-DD-YY) 10-06-04

OUR ORDER NO. 86376 ORDER DATE (MM-DD-YY) 09-14-04

YOUR ORDER NO. 059502

TERMS 0.00/0/30

QUOTE # \_\_\_\_\_

F.O.B. ORIGIN

CODE 1146 (100.00)

VIA UPS COLLECT

SPECIAL SHIPPING INSTRUCTIONS ACCT # 129250

*DN999-99C*

| LI  | PART NO.                           | DESCRIPTION  | QTY | DSCNT % | UNIT PRICE  | AMOUNT                     |
|---|------------------------------------|--|-----|---------|-------------|----------------------------|
| 1   | DN-HO#22499<br><i>w.o. # 17124</i> | DN_DNE31-13C<br>IRCON INFRARAIL IRT SENSING HEAD ONLY<br>Consists of the following:<br>1.0000 - INFRARAIL HEAD ONLY<br>1.0000 - DN - E SERIES<br>1.0000 - D/100 RESOLUTION (E)<br>1.0000 - 800-1300C<br>DN_DNE31-13C | 1   | 0.00    | 2500.00     | 2500.00                    |
|   |                                    |  |     |         |             | <i>Reds Spec. No R 726</i> |
|   |                                    |  |     |         |             | <i>Temp 1000-1700C</i>     |
|   |                                    |  |     |         |             | <i>RHB</i>                 |
|   |                                    |  |     |         |             | <i>9/15</i>                |
| THIS ORDER IS ACCEPTED SUBJECT TO TERMS AND CONDITIONS SHOWN ON THIS AND THE REVERSE SIDE |                                    |  |     |         | GRAND TOTAL | USD2,500.00                |

SHIP TO: IRCON, INC.  
7300 N. NATCHEZ AVE.  
NILES, IL 60714 USA

IF TAX EXEMPT, PLEASE PROVIDE COPY OF EXEMPTION OR DIRECT PAYMENT CERTIFICATE.

# Acknowledgment



IRCON, INC.  
7300 N. Natchez Ave.  
Niles, IL 60714 USA

Phone 847-967-5151  
Toll Free 800-323-7660  
Fax 847-647-0948

SOLD TO \_\_\_\_\_ CUSTOMER NO. 009013  
  
KAYEX TECHNICAL CENTER  
1000 MILLSTEAD WAY  
ROCHESTER, NY 14624

SHIPPING ADDRESS \_\_\_\_\_ TAX CODE NO TAX  
  
KAYEX TECHNICAL CENTER  
1000 MILLSTEAD WAY  
ROCHESTER, NY 14624

REQUEST DATE (MM-DD-YY) 02-01-05 PROMISE DATE (MM-DD-YY) 02-01-05  
OUR ORDER NO. 87197 ORDER DATE (MM-DD-YY) 12-22-04  
YOUR ORDER NO. 059904  
TERMS 0.00/0/30  
QUOTE # \_\_\_\_\_  
F.O.B. ORIGIN  
CODE 1146 (100.00)  
VIA UPS COLLECT  
SPECIAL SHIPPING INSTRUCTIONS \_\_\_\_\_  
ACCT NO. 129250

*DNE99-99C*

| LI | PART NO.                                  | DESCRIPTION   | QTY | DSCNT % | UNIT PRICE         | AMOUNT             |
|----|---|---|-----|---------|--------------------|--------------------|
| 1  | DN-HO#23742<br><br><i>w.o.#<br/>17839</i> | DN_DNE31-13C<br>IRCON INFRARAIL IRT<br>SENSING HEAD ONLY<br>Consists of the following:<br>1.0000 - INFRARAIL HEAD ONLY<br>1.0000 - DN - E SERIES<br>1.0000 - D/100 RESOLUTION (E)<br>1.0000 - 800-1300C<br>DN_DNE31-13C<br><br><i>Redo Special<br/>R 726 Temp Range<br/>1000-1700C<br/><br/>Cyno<br/>12-22-04</i> | 1   | 0.00    | 2500.00            | 2500.00            |
|    |   |   |     |         | <b>GRAND TOTAL</b> | <b>USD2,500.00</b> |

THIS ORDER IS ACCEPTED SUBJECT TO TERMS AND CONDITIONS SHOWN ON THIS AND THE REVERSE SIDE

SHIP TO: IRCON, INC.  
7300 N. NATCHEZ AVE.  
NILES, IL 60714 USA

IF TAX EXEMPT, PLEASE PROVIDE COPY OF EXEMPTION OR DIRECT PAYMENT CERTIFICATE.

W.O.#17124

Process: CFG-R-09  
20 SEP 2004

IRCON INC  
Indented Configuration Bom

Page 1  
12:04:26

Number :DN-HO#22499 - IRCON INFRARAIL IRT SO-LI: 86376\*1

| Level | Part Number | Description               | Quantity | UM | Alt. | MB | X | ECO No. | ECO Date | Start Use | End Use |
|-------|-------------|---------------------------|----------|----|------|----|---|---------|----------|-----------|---------|
| 1     | DNLDNE      | DN PRICES                 | 1.0000   | EA |      |    |   |         |          |           |         |
| 1     | C11148      | SENSING HEAD FINAL ASSEMB | 1.0000   | EA |      |    |   |         |          |           |         |
| 2     | 447312      | S.H. MECH ASSY SPL#E724   | 1.0000   | EA |      |    |   |         |          |           |         |
| 2     | 20081267D   | SCREW #8-32 X 3/8" SOCKET | 1.0000   | EA |      |    |   |         |          |           |         |
| 2     | 611032      | LENS PLANO CONVEX 12.5MM  | 1.0000   | EA |      |    |   |         |          |           |         |
| 2     | B11147      | DETECTOR ASSEMBLY         | 1.0000   | EA |      |    |   |         |          |           |         |
| 3     | 501743      | PCB DETECTOR SILICON SPEC | 1.0000   | EA |      |    |   |         |          |           |         |
| 3     | 445172      | STANDOFF SWAGE 1/8OD X 3/ | 3.0000   | EA |      |    |   |         |          |           |         |
| 3     | 410312      | SCREW #00-80 X 3/19 PAN H | 3.0000   | EA |      |    |   |         |          |           |         |
| 3     | 432242      | PLASTIC SPACER .219" LONG | 1.0000   | EA |      |    |   |         |          |           |         |
| 3     | 590532      | DET. SILCN MOD+/V/W/MAX/M | 1.0000   | EA |      |    |   |         |          |           |         |
| 3     | 454122      | DET. FIELD STOP .030 DIA  | 1.0000   | EA |      |    |   |         |          |           |         |
| 3     | 640482      | FILTER BANDPASS 0.7-1.0U  | 1.0000   | EA |      |    |   |         |          |           |         |
| 3     | 990100002   | EPOXY HARDMAN #4005 GEN P | 1.0000   | EA |      |    |   |         |          |           |         |
| 2     | 473752      | LABEL REIMAGING Z LENS    | 1.0000   | EA |      |    |   |         |          |           |         |
| 2     | 990100002   | EPOXY HARDMAN #4005 GEN P | 1.0000   | EA |      |    |   |         |          |           |         |

R726 (sensor only)

W.O.# 2831

BOM Number : DN-HO#2397 - IRCON INFRARAIL IRT

SO-LI: 71615\*1

| Level | Part Number | Description               | Quantity | UM | Alt. | MB | X | ECO No. | ECO Date | Start Use | End Use |
|-------|-------------|---------------------------|----------|----|------|----|---|---------|----------|-----------|---------|
| 1     | DN1DNE      | DN PRICES                 | 1.0000   | EA |      |    |   |         |          |           |         |
| 1     | C11148      | SENSING HEAD FINAL ASSEMB | 1.0000   | EA |      |    |   |         |          |           |         |
| 2     | 447312      | S.H. MECH ASSY SPL#E724   | 1.0000   | EA |      |    |   |         |          |           |         |
| 2     | 20081267D   | SCREW #8-32 X 3/8" SOCKET | 1.0000   | EA |      |    |   |         |          |           |         |
| 2     | 611032      | LENS PLANO CONVEX 12.5MM  | 1.0000   | EA |      |    |   |         |          |           |         |
| 2     | B11147      | DETECTOR ASSEMBLY         | 1.0000   | EA |      |    |   |         |          |           |         |
| 3     | 501743      | PCB DETECTOR SILICON SPEC | 1.0000   | EA |      |    |   |         |          |           |         |
| 3     | 445172      | STANDOFF SWAGE 1/80D X 3/ | 3.0000   | EA |      |    |   |         |          |           |         |
| 3     | 410312      | SCREW #00-80 X 3/19 PAN H | 3.0000   | EA |      |    |   |         |          |           |         |
| 3     | 432242      | PLASTIC SPACER .219" LONG | 1.0000   | EA |      |    |   |         |          |           |         |
| 3     | 590532      | DET. SILCN MOD+/V/W/MAX/M | 1.0000   | EA |      |    |   |         |          |           |         |
| 3     | 454122      | DET. FIELD STOP .030 DIA  | 1.0000   | EA |      |    |   |         |          |           |         |
| 3     | 640482      | FILTER BANDPASS 0.7-1.0U  | 1.0000   | EA |      |    |   |         |          |           |         |
| 3     | 990100002   | EPOXY HARDMAN #4005 GEN P | 1.0000   | EA |      |    |   |         |          |           |         |
| 2     | 473752      | LABEL REIMAGING Z LENS    | 1.0000   | EA |      |    |   |         |          |           |         |
| 2     | 990100002   | EPOXY HARDMAN #4005 GEN P | 1.0000   | EA |      |    |   |         |          |           |         |

R726  
SENSOR ONLY



IRCON, INC T 847-967-5151  
 7300 North Natchez Ave T 800-323-7660  
 Niles, Illinois 60714 USA F 847-647-0948

# Acknowledgment

ORDER DATE: 12 JUL 2005

REV: DATE:

Customer No. 009013  
**SOLD TO**

KAYEX TECHNICAL CENTER  
 1000 MILLSTEAD WAY  
 ROCHESTER, NY 14624

**SHIP TO**

KAYEX TECHNICAL CENTER  
 1000 MILLSTEAD WAY  
 ROCHESTER, NY 14624

**SPECIAL SHIPPING INSTRUCTIONS**

ACCT NO. 129250

| OUR ORDER No.   |                                       | YOUR PO No.  |     | F.O.B.         |      | TAX   |             |
|---|---------------------------------------|--|-----|----------------|------|---|-------------|
| 88675   |                                       | 061215   |     | ORIGIN         |      | Resale  |             |
| SHIP VIA  |                                       | TERMS  |     | DATE REQUESTED |      | SALES REPRESENTATIVE  |             |
| UPS COLLECT   |                                       | 0.00/0/30  |     | 07-22-05       |      | 1227 (100.00)   |             |
| LI  | PART NO.                              | PRODUCT/DESCRIPTION  | QTY | UNIT PRICE     | DISC | NET PRICE   | EXTENSION   |
| 1   | DN-HO#26091<br><i>w.o.#<br/>19196</i> | <del>DN_DNE31-13C</del> <i>DN999-99C</i><br>IRCON INFRARAIL IRT<br>SENSING HEAD ONLY<br>Consists of the following:<br>1.0000 - INFRARAIL HEAD ONLY<br>1.0000 - DN <del>E</del> SERIES<br>1.0000 - <del>D/100 RESOLUTION (E)</del><br>1.0000 - <del>800-1300C</del><br><br>PART # 078031 <i>special resolution R726</i> | 1   | 2500.00        | 0.0  | 2500.00   | 2500.00     |
|   |                                       |  |     |                |      | <i>Redo Special No R726<br/>Temp range 1000-1700C<br/>R726<br/>7/13</i> |             |
| THIS ORDER IS ACCEPTED SUBJECT TO TERMS AND CONDITIONS SHOWN ON THIS AND THE REVERSE SIDE |                                       |  |     |                |      | <b>GRAND TOTAL</b>  | USD2,500.00 |

SHIP TO: IRCON, INC.  
 7300 N. NATCHEZ AVE.  
 NILES, IL 60714 USA

IF TAX EXEMPT, PLEASE PROVIDE COPY OF  
 EXEMPTION OR DIRECT PAYMENT CERTIFICATE



IRCON, INC.  
7300 North Natchez Avenue  
Niles, Illinois 60714 USA

Telephone 847-967-5151  
Toll Free 800-323-7660  
Fax 847-647-0948

ISO 9001/QS 9000 TE  
Quality Systems Certified

**Modified Standard Product**  
**Data Form**

*A modified standard product is a product that is based on a standard product found in the most recent price list. The modifications maybe items such as; temperature ranges, output types, resolution, response time and optical issues. A modified standard product form is to be completed and submitted to Steve Schumm and Gene Kalley for review and approval based on the modification (which we have done before). If the modification has not been done before, the approval will require the entire senior management team's approval BEFORE QUOTING. A modified standard product if approved; this product will become a price listed standard product. We can then pay commission as outlined in our most recent contract.*

➤ Standard Product is a Model Number: PNE1213C

➤ Standard Product List Price: \$1090

➤ The product change requested would be: Reds R 726  
1000-1700 C **Sales will attach specifics to this form.**

➤ The market is willing to pay: 2500 for this product (total including standard price).

➤ What is engineering's expected time investment and cost: 1 hour Man Days  
\$ 100.00

➤ What is production's expected purchasing and production time requirement: \_\_\_\_\_ Days

➤ This new product has potential in the following application and estimated potential per year would be \_\_\_\_\_ per year:

➤ This product will be  not be \_\_\_\_\_ quoted and produced as previously outlined.

➤ Agreed on this date of \_\_\_\_\_ By production/purchasing \_\_\_\_\_

By engineering A. Donado 7/14/05  
W.O.# 19196

➤ Sales can now quote this project for \$ \_\_\_\_\_ per unit.  
\_\_\_\_\_ lead time.

\_\_\_\_ Add to standard product list in literature (Maxine)  
\_\_\_\_ Add to price list (Vern)

cc/ Greg P, Paul V, Regional Sales Staff Globally

W.O.# 19196

Number :DN-HO#26091 - IRCON INFRARAIL IRT SO-LI: 88675\*1

| .....Level..... | ..Part Number.. | .....Description.....     | .Quantity. | .UM. | Alt. | MB X | .ECO No. | .ECO Date. | .Start Use | .End Use.. |
|-----------------|-----------------|---------------------------|------------|------|------|------|----------|------------|------------|------------|
| 1               | DN1DNE          | DN PRICES                 | 1.0000     | EA   |      |      |          |            |            |            |
| 1               | C11148          | SENSING HEAD FINAL ASSEMB | 1.0000     | EA   |      | M P  |          |            |            |            |
| 2               | 447312          | S.H. MECH ASSY SPL#E724   | 1.0000     | EA   |      | B    |          |            |            |            |
| 2               | 20081267D       | SCREW #8-32 X 3/8" SOCKET | 1.0000     | EA   |      | B    |          |            |            |            |
| 2               | 611032          | LENS PLANO CONVEX 12.5MM  | 1.0000     | EA   |      | B    |          |            |            |            |
| 2               | B11147          | DETECTOR ASSEMBLY         | 1.0000     | EA   |      | M P  |          |            |            |            |
| 3               | 501743          | PCB DETECTOR SILICON SPEC | 1.0000     | EA   |      | B    |          |            |            |            |
| 3               | 445172          | STANDOFF SWAGE 1/80D X 3/ | 3.0000     | EA   |      | B    |          |            |            |            |
| 3               | 410312          | SCREW #00-80 X 3/19 PAN H | 3.0000     | EA   |      | B    |          |            |            |            |
| 3               | 432242          | PLASTIC SPACER .219" LONG | 1.0000     | EA   |      | B    |          |            |            |            |
| 3               | 590532          | DET. SILCN MOD+/V/W/MAX/M | 1.0000     | EA   |      | B    |          |            |            |            |
| 3               | 454122          | DET. FIELD STOP .030 DIA  | 1.0000     | EA   |      | B    |          |            |            |            |
| 3               | 640482          | FILTER BANDPASS 0.7-1.0U  | 1.0000     | EA   |      | B    |          |            |            |            |
| 3               | 990100002       | EPOXY HARDMAN #4005 GEN P | 1.0000     | EA   |      | B    |          |            |            |            |
| 2               | 473752          | LABEL REIMAGING Z LENS    | 1.0000     | EA   |      | B    |          |            |            |            |
| 2               | 990100002       | EPOXY HARDMAN #4005 GEN P | 1.0000     | EA   |      | B    |          |            |            |            |

R726  
(Sensor Only)



IRCON, INC T 847-967-5151  
 7300 North Natchez Ave T 800-323-7660  
 Niles, Illinois 60714 USA F 847-647-0948

# Acknowledgment

ORDER DATE: 12 OCT 2005

REV: DATE:

Customer No. 009013  
 SOLD TO

**SHIP TO**

KAYEX TECHNICAL CENTER  
 A UNIT OF SPX  
 1000 MILLSTEAD WAY  
 ROCHESTER, NY 14624

KAYEX TECHNICAL CENTER  
 1000 MILLSTEAD WAY  
 ROCHESTER, NY 14624

**SPECIAL SHIPPING INSTRUCTIONS**

ACCT NO. 129250

| OUR ORDER No.   |                                    | YOUR PO No.   |     | F.O.B.                    |                      |                        | TAX         |
|---|------------------------------------|---|-----|---------------------------|----------------------|------------------------|-------------|
| 89385   |                                    | 061670  |     | ORIGIN                    |                      |                        | Resale      |
| SHIP VIA  |                                    | TERMS   |     | DATE REQUESTED            | SALES REPRESENTATIVE |                        |             |
| UPS COLLECT   |                                    | 0.00/0/30   |     | 11-16-05                  | 1227 (100.00)        |                        |             |
| LI  | PART NO.                           | PRODUCT/DESCRIPTION   | QTY | UNIT PRICE                | DISC                 | NET PRICE              | EXTENSION   |
| 1   | DN-HO#27091<br><i>w.o. # 19814</i> | DN_DNE31-13C<br>IRCON INFRARAIL IRT<br>SENSING HEAD ONLY<br>Consists of the following:<br>1.0000 - INFRARAIL HEAD ONLY<br>1.0000 - DN - E SERIES<br>1.0000 - D/100 RESOLUTION (E)<br>1.0000 - 800-1300C | 1   | 2500.00                   | 0.0                  | 2500.00                | 2500.00     |
|   |                                    | <i>DN999-99C</i>  |     | <i>Redo Spec. No R726</i> |                      | <i>Temp 1000-1700C</i> |             |
|   |                                    |   |     | <i>Same as E724</i>       |                      | <i>RMB 10/12</i>       |             |
| THIS ORDER IS ACCEPTED SUBJECT TO TERMS AND CONDITIONS SHOWN ON THIS AND THE REVERSE SIDE |                                    |   |     |                           | <b>GRAND TOTAL</b>   |                        | USD2,500.00 |

SHIP TO: IRCON, INC.  
 7300 N. NATCHEZ AVE.  
 NILES, IL 60714 USA

IF TAX EXEMPT, PLEASE PROVIDE COPY OF  
 EXEMPTION OR DIRECT PAYMENT CERTIFICATE



IRCON, INC.  
7300 North Natchez Avenue  
Niles, Illinois 60714 USA

Telephone 847-967-5151  
Toll Free 800-323-7660  
Fax 847-647-0948

ISO 9001/QS 9000 TE  
Quality Systems Certified

**Modified Standard Product**  
**Data Form**

*A modified standard product is a product that is based on a standard product found in the most recent price list. The modifications maybe items such as; temperature ranges, output types, resolution, response time and optical issues. A modified standard product form is to be completed and submitted to Steve Schumm and Gene Kalley for review and approval based on the modification (which we have done before). If the modification has not been done before, the approval will require the entire senior management team's approval BEFORE QUOTING. A modified standard product if approved; this product will become a price listed standard product. We can then pay commission as outlined in our most recent contract.*

- Standard Product is a Model Number: DNET3-130
- Standard Product List Price: \$ 1945
- The product change requested would be: Relo Spec R726  
1000-1700C, or E724      Sales will attach specifics to this form.
- The market is willing to pay \$2500 for this product (total including standard price).
- What is engineering's expected time investment and cost: 1 HOUR Man Days  
\$ 100<sup>00</sup>
- What is production's expected purchasing and production time requirement: \_\_\_\_\_ Days
- This new product has potential in the following application and estimated potential per year would be \_\_\_\_\_ per year:

\_\_\_\_\_

- This product will be  not be \_\_\_\_\_ quoted and produced as previously outlined.

- Agreed on this date of \_\_\_\_\_ By production/purchasing \_\_\_\_\_

By engineering A. DONADO 10/13/05

- Sales can now quote this project for \$ \_\_\_\_\_ per unit. W.O. # 19814
- \_\_\_\_\_ lead time.

\_\_\_\_\_ Add to standard product list in literature (Maxine)  
\_\_\_\_\_ Add to price list (Vern)  
cc/ Greg P, Paul V, Regional Sales Staff Globally

W.O.# 19814

Process: CFG-R-09  
13 OCT 2005

IRCON INC  
Indented Configuration Bom

Page 1  
13:33:46

Number :DN-HO#27091 - IRCON INFRARAIL IRT SO-LI: 89385\*1

| Level | Part Number | Description               | Quantity | UM | Alt | MB | X | ECO No. | ECO Date | Start Use | End Use |
|-------|-------------|---------------------------|----------|----|-----|----|---|---------|----------|-----------|---------|
| 1     | DN1DNE      | DN PRICES                 | 1.0000   | EA |     | M  | P |         |          |           |         |
| 1     | C11148      | SENSING HEAD FINAL ASSEMB | 1.0000   | EA |     | M  | P |         |          |           |         |
| 2     | 447312      | S.H. MECH ASSY SPL#E724   | 1.0000   | EA |     | B  |   |         |          |           |         |
| 2     | 20081267D   | SCREW #8-32 X 3/8" SOCKET | 1.0000   | EA |     | B  |   |         |          |           |         |
| 2     | 611032      | LENS PLANO CONVEX 12.5MM  | 1.0000   | EA |     | B  |   |         |          |           |         |
| 2     | B11147      | DETECTOR ASSEMBLY         | 1.0000   | EA |     | M  | P |         |          |           |         |
| 3     | 501743      | PCB DETECTOR SILICON SPEC | 1.0000   | EA |     | B  |   |         |          |           |         |
| 3     | 445172      | STANDOFF SWAGE 1/8OD X 3/ | 3.0000   | EA |     | B  |   |         |          |           |         |
| 3     | 410312      | SCREW #00-80 X 3/19 PAN H | 3.0000   | EA |     | B  |   |         |          |           |         |
| 3     | 432242      | PLASTIC SPACER .219" LONG | 1.0000   | EA |     | B  |   |         |          |           |         |
| 3     | 590532      | DET. SILCN MOD+/V/W/MAX/M | 1.0000   | EA |     | B  |   |         |          |           |         |
| 3     | 454122      | DET. FIELD STOP .030 DIA  | 1.0000   | EA |     | B  |   |         |          |           |         |
| 3     | 640482      | FILTER BANDPASS 0.7-1.0U  | 1.0000   | EA |     | B  |   |         |          |           |         |
| 3     | 990100002   | EPOXY HARDMAN #4005 GEN P | 1.0000   | EA |     | B  |   |         |          |           |         |
| 2     | 473752      | LABEL REIMAGING Z LENS    | 1.0000   | EA |     | B  |   |         |          |           |         |
| 2     | 990100002   | EPOXY HARDMAN #4005 GEN P | 1.0000   | EA |     | B  |   |         |          |           |         |

R726 (sensor Only)



IRCON, INC T 847-967-5151  
 7300 North Natchez Ave T 800-323-7660  
 Niles, Illinois 60714 USA F 847-647-0948

# Acknowledgment

ORDER DATE: 20 DEC 2005  
 REV: DATE:

Customer No. 009013  
 SOLD TO

SHIP TO  
 KAYEX TECHNICAL CENTER  
 1000 MILLSTEAD WAY  
 ROCHESTER, NY 14624

KAYEX TECHNICAL CENTER  
 1000 MILLSTEAD WAY  
 ROCHESTER, NY 14624

SPECIAL SHIPPING INSTRUCTIONS  
 ACCT NO. 129250

| OUR ORDER No.   |                                   | YOUR PO No.   |     | F.O.B.   |                      |             | TAX         |
|---|-----------------------------------|---|-----|--|----------------------|-------------|-------------|
| 89991   |                                   | 062258  |     | ORIGIN   |                      |             | Resale      |
| SHIP VIA  |                                   | TERMS   |     | DATE REQUESTED                                   | SALES REPRESENTATIVE |             |             |
| UPS COLLECT   |                                   | 0.00/0/30   |     | 01-06-06   | 1227 (100.00)        |             |             |
| LI  | PART NO.                          | PRODUCT/DESCRIPTION   | QTY | UNIT PRICE                                       | DISC                 | NET PRICE   | EXTENSION   |
| 1   | DN-HO#28090<br><br>W.O.#<br>20424 | DN_DNE31-13C<br>IRCON INFRARAIL IRT<br>SENSING HEAD ONLY<br>Consists of the following:<br>1.0000 - INFRARAIL HEAD ONLY<br>1.0000 - DN - E SERIES<br>1.0000 - D/100 RESOLUTION (E)<br>1.0000 - 800-1300C | 1   | 2500.00  | 0.0                  | 2500.00     | 2500.00     |
|   |                                   |   |     | Resto R 726<br>Temp 1000-1700 C<br>SAME AS E 724 |                      |             |             |
| THIS ORDER IS ACCEPTED SUBJECT TO TERMS AND CONDITIONS SHOWN ON THIS AND THE REVERSE SIDE |                                   |   |     |  |                      | GRAND TOTAL | USD2,500.00 |

SHIP TO: IRCON, INC.  
 7300 N. NATCHEZ AVE.  
 NILES, IL 60714 USA

IF TAX EXEMPT, PLEASE PROVIDE COPY OF  
 EXEMPTION OR DIRECT PAYMENT CERTIFICATE



IRCON, INC T 847-967-5151  
 7300 North Natchez Ave T 800-323-7660  
 Niles, Illinois 60714 USA F 847-647-0948

# Acknowledgment

ORDER DATE: 20 DEC 2005

REV: DATE:

Customer No. 009013

SOLD TO

SHIP TO

KAYEX TECHNICAL CENTER  
 1000 MILLSTEAD WAY  
 ROCHESTER, NY 14624

KAYEX TECHNICAL CENTER  
 1000 MILLSTEAD WAY  
 ROCHESTER, NY 14624

SPECIAL SHIPPING INSTRUCTIONS

ACCT NO. 062258

| OUR ORDER No.   |                                   | YOUR PO No.  |     | F.O.B.                                     |                      |           | TAX         |
|---|-----------------------------------|--|-----|--|----------------------|-----------|-------------|
| 89992   |                                   | 062258   |     | ORIGIN                                     |                      |           | Resale      |
| SHIP VIA  |                                   | TERMS  |     | DATE REQUESTED                             | SALES REPRESENTATIVE |           |             |
| UPS COLLECT   |                                   | 0.00/0/30  |     | 02-20-06                                   | 1227 (100.00)        |           |             |
| LI  | PART NO.                          | PRODUCT/DESCRIPTION  | QTY | UNIT PRICE                                 | DISC                 | NET PRICE | EXTENSION   |
| 1   | DN-HO#28091<br><br>W.O.#<br>20423 | 99 9999<br>DN_DNE31-AZC<br>IRCON INFRARAIL IRT<br>SENSING HEAD ONLY<br>Consists of the following:<br>1.0000 - INFRARAIL HEAD ONLY<br>1.0000 - DN - E SERIES<br>1.0000 - D/100 RESOLUTION (E)<br>1.0000 - 800-1300C<br>P/N 078031 | 1   | 2500.00                                    | 0.0                  | 2500.00   | 2500.00     |
|   |                                   |  |     | Redo R726<br>1000 - 1700 @<br>SAME AS E72d |                      |           |             |
| THIS ORDER IS ACCEPTED SUBJECT TO TERMS AND CONDITIONS SHOWN ON THIS AND THE REVERSE SIDE |                                   |  |     |  | <b>GRAND TOTAL</b>   |           | USD2,500.00 |

SHIP TO: IRCON, INC.  
 7300 N. NATCHEZ AVE.  
 NILES, IL 60714 USA

IF TAX EXEMPT, PLEASE PROVIDE COPY OF  
 EXEMPTION OR DIRECT PAYMENT CERTIFICATE

W.O.#20423

Process: CFG-R-09  
21 DEC 2005

IRCON INC  
Indented Configuration Bom

Page 1  
13:25:47

Number :DN-HO#28091 - IRCON INFRARAIL IRT SO-LI: 89992\*1

| Level | Part Number | Description               | Quantity | UM | Alt | MB | X | ECO No. | ECO Date | Start Use | End Use |
|-------|-------------|---------------------------|----------|----|-----|----|---|---------|----------|-----------|---------|
| 1     | DN1DNE      | DN PRICES                 | 1.0000   | EA |     |    |   |         |          |           |         |
| 1     | C11148      | SENSING HEAD FINAL ASSEMB | 1.0000   | EA |     |    |   |         |          |           |         |
| 2     | 447312      | S.H. MECH ASSY SPL#E724   | 1.0000   | EA |     |    |   |         |          |           |         |
| 2     | 20081267D   | SCREW #8-32 X 3/8" SOCKET | 1.0000   | EA |     |    |   |         |          |           |         |
| 2     | 611032      | LENS PLANO CONVEX 12.5MM  | 1.0000   | EA |     |    |   |         |          |           |         |
| 2     | B11147      | DETECTOR ASSEMBLY         | 1.0000   | EA |     |    |   |         |          |           |         |
| 3     | 501743      | PCB DETECTOR SILICON SPEC | 1.0000   | EA |     |    |   |         |          |           |         |
| 3     | 445172      | STANDOFF SWAGE 1/8OD X 3/ | 3.0000   | EA |     |    |   |         |          |           |         |
| 3     | 410312      | SCREW #00-80 X 3/19 PAN H | 3.0000   | EA |     |    |   |         |          |           |         |
| 3     | 432242      | PLASTIC SPACER .219" LONG | 1.0000   | EA |     |    |   |         |          |           |         |
| 3     | 590532      | DET. SILCN MOD+/V/W/MAX/M | 1.0000   | EA |     |    |   |         |          |           |         |
| 3     | 454122      | DET. FIELD STOP .030 DIA  | 1.0000   | EA |     |    |   |         |          |           |         |
| 3     | 640482      | FILTER BANDPASS 0.7-1.0U  | 1.0000   | EA |     |    |   |         |          |           |         |
| 3     | 990100002   | EPOXY HARDMAN #4005 GEN P | 1.0000   | EA |     |    |   |         |          |           |         |
| 2     | 473752      | LABEL REIMAGING Z LENS    | 1.0000   | EA |     |    |   |         |          |           |         |
| 2     | 990100002   | EPOXY HARDMAN #4005 GEN P | 1.0000   | EA |     |    |   |         |          |           |         |

R 726 (sensor only)

W.O.# 20424

Process: CFG-R-09  
21 DEC 2005

IRCON INC  
Indented Configuration Bom

Page 1  
13:45:09

Number :DN-HO#28090 - IRCON INFRARAIL IRT SO-LI: 89991\*1

| Level | Part Number | Description               | Quantity | UM | Alt. | MB | X | ECO No. | ECO Date | Start Use | End Use |
|-------|-------------|---------------------------|----------|----|------|----|---|---------|----------|-----------|---------|
| 1     | DN1DNE      | DN PRICES                 | 1.0000   | EA |      |    |   |         |          |           |         |
| 1     | C11148      | SENSING HEAD FINAL ASSEMB | 1.0000   | EA |      |    |   |         |          |           |         |
| 2     | 447312      | S.H. MECH ASSY SPL#E724   | 1.0000   | EA |      |    |   |         |          |           |         |
| 2     | 20081267D   | SCREW #8-32 X 3/8" SOCKET | 1.0000   | EA |      |    |   |         |          |           |         |
| 2     | 611032      | LENS PLANO CONVEX 12.5MM  | 1.0000   | EA |      |    |   |         |          |           |         |
| 2     | B11147      | DETECTOR ASSEMBLY         | 1.0000   | EA |      |    |   |         |          |           |         |
| 3     | 501743      | PCB DETECTOR SILICON SPEC | 1.0000   | EA |      |    |   |         |          |           |         |
| 3     | 445172      | STANDOFF SWAGE 1/8OD X 3/ | 3.0000   | EA |      |    |   |         |          |           |         |
| 3     | 410312      | SCREW #00-80 X 3/19 PAN H | 3.0000   | EA |      |    |   |         |          |           |         |
| 3     | 432242      | PLASTIC SPACER .219" LONG | 1.0000   | EA |      |    |   |         |          |           |         |
| 3     | 590532      | DET. SILCN MOD+/V/W/MAX/M | 1.0000   | EA |      |    |   |         |          |           |         |
| 3     | 454122      | DET. FIELD STOP .030 DIA  | 1.0000   | EA |      |    |   |         |          |           |         |
| 3     | 640482      | FILTER BANDPASS 0.7-1.0U  | 1.0000   | EA |      |    |   |         |          |           |         |
| 3     | 990100002   | EPOXY HARDMAN #4005 GEN P | 1.0000   | EA |      |    |   |         |          |           |         |
| 2     | 473752      | LABEL REIMAGING Z LENS    | 1.0000   | EA |      |    |   |         |          |           |         |
| 2     | 990100002   | EPOXY HARDMAN #4005 GEN P | 1.0000   | EA |      |    |   |         |          |           |         |

R726 (sensor only)



# Acknowledgment

IRCON, INC T 847-967-5151  
 7300 North Natchez Ave T 800-323-7660  
 Niles, Illinois 60714 USA F 847-647-0948

ORDER DATE: 27 APR 2006

REV: DATE:

Customer No. 009013  
 SOLD TO

SHIP TO

KAYEX TECHNICAL CENTER  
 1000 MILLSTEAD WAY  
 ROCHESTER, NY 14624

KAYEX TECHNICAL CENTER  
 1000 MILLSTEAD WAY  
 ROCHESTER, NY 14624

SPECIAL SHIPPING INSTRUCTIONS

ACCT NO. 129250

|               |             |                |                      |
|---------------|-------------|----------------|----------------------|
| OUR ORDER No. | YOUR PO No. | F.O.B.         | TAX                  |
| 90988         | 062772      | ORIGIN         | Resale               |
| SHIP VIA      | TERMS       | DATE REQUESTED | SALES REPRESENTATIVE |
| UPS COLLECT   | 0.00/0/30   | 09-22-06       | 1227 (100.00)        |

| LI | PART NO.                          | PRODUCT/DESCRIPTION   | QTY | UNIT PRICE | DISC | NET PRICE | EXTENSION |
|----|-----------------------------------|---|-----|------------|------|-----------|-----------|
| 1  | DN-HO#29744<br><br>W.O.#<br>21308 | <del>DN DNE31-13C</del> <i>DN999-99C</i><br>IRCON INFRARAIL IRT<br>SENSING HEAD ONLY<br>Consists of the following:<br>1.0000 - INFRARAIL HEAD ONLY<br>1.0000 - DN - E SERIES <i>SPECIAL 1000-1700C</i><br>1.0000 - <del>D/100 RESOLUTION (E)</del><br>1.0000 - <del>800-1300C</del><br><br>DO NOT SHIP BEFORE 9/13/06 | 1   | 2500.00    | 0.0  | 2500.00   | 2500.00   |

*Redo Spec No R726*  
*0.3 IN Spat @ 9 IN Dist*  
*Rob 4/27*

|   |             |             |
|---|-------------|-------------|
| THIS ORDER IS ACCEPTED SUBJECT TO TERMS AND CONDITIONS SHOWN ON THIS AND THE REVERSE SIDE | GRAND TOTAL | USD2,500.00 |
|---|-------------|-------------|

SHIP TO: IRCON, INC.  
 7300 N. NATCHEZ AVE.  
 NILES, IL 60714 USA

IF TAX EXEMPT, PLEASE PROVIDE COPY OF EXEMPTION OR DIRECT PAYMENT CERTIFICATE



IRCON, INC.  
7300 North Natchez Avenue  
Niles, Illinois 60714 USA

Telephone 847-967-5151  
Toll Free 800-323-7660  
Fax 847-647-0948

ISO 9001/OS 9000 TE  
Quality Systems Certified

**Modified Standard Product**  
**Data Form**

*A modified standard product is a product that is based on a standard product found in the most recent price list. The modifications maybe items such as; temperature ranges, output types, resolution, response time and optical issues. A modified standard product form is to be completed and submitted to Steve Schumm and Gene Kalley for review and approval based on the modification (which we have done before). If the modification has not been done before, the approval will require the entire senior management team's approval BEFORE QUOTING. A modified standard product if approved; this product will become a price listed standard product. We can then pay commission as outlined in our most recent contract.*

- Standard Product is a Model Number: RNE31-13C
- Standard Product List Price: \$1075
- The product change requested would be: Re-do R726  
1000-1700C Sales will attach specifics to this form.
- The market is willing to pay \$2500 for this product (total including standard price).
- What is engineering's expected time investment and cost: 1 HOUR Man Days  
\$100.00
- What is production's expected purchasing and production time requirement:      Days
- This new product has potential in the following application and estimated potential per year would be      per year.

- This product will be  not be      quoted and produced as previously outlined.
- Agreed on this date of      By production/purchasing       
By engineering A. DONADO 5/2/06
- Sales can now quote this project for \$      per unit. W.O.# 21308  
     lead time.

     Add to standard product list in literature (Maxine)  
     Add to price list (Vern)  
cc/ Greg P, Paul V, Regional Sales Staff Globally



# Acknowledgment

IRCON, INC T 847-967-5151  
 7300 North Natchez Ave T 800-323-7660  
 Niles, Illinois 60714 USA F 847-647-0948

ORDER DATE: 27 APR 2006

REV: DATE:

Customer No. 009013  
SOLD TO

SHIP TO  
 KAYEX TECHNICAL CENTER  
 1000 MILLSTEAD WAY  
 ROCHESTER, NY 14624

KAYEX TECHNICAL CENTER  
 1000 MILLSTEAD WAY  
 ROCHESTER, NY 14624

### SPECIAL SHIPPING INSTRUCTIONS

ACCT NO. 129250

| OUR ORDER No.   |                                   | YOUR PO No.   |     | F.O.B.   |                      | TAX       |             |
|---|-----------------------------------|---|-----|--|----------------------|-----------|-------------|
| 90987   |                                   | 062772  |     | ORIGIN   |                      | Resale    |             |
| SHIP VIA  |                                   | TERMS   |     | DATE REQUESTED   | SALES REPRESENTATIVE |           |             |
| UPS COLLECT   |                                   | 0.00/0/30   |     | 06-09-06   | 1227 (100.00)        |           |             |
| LI  | PART NO.                          | PRODUCT/DESCRIPTION   | QTY | UNIT PRICE   | DISC                 | NET PRICE | EXTENSION   |
| 1   | DN-HO#29743<br><br>W.O.#<br>21384 | <del>DN_DNE31-13C</del> <i>DN999-99C</i><br>IRCON INFRARAIL IRT<br>SENSING HEAD ONLY<br>Consists of the following:<br>1.0000 - INFRARAIL HEAD ONLY<br>1.0000 - DN - <del>E</del> SERIES SPECIAL<br>1.0000 - D/100 RESOLUTION (E)<br>1.0000 - 800-1300C<br><br>DO NOT SHIP BEFORE 05/30/06 | 1   | 2500.00  | 0.0                  | 2500.00   | 2500.00     |
|   |                                   |   |     | <i>Reslo special R726</i><br><i>Temp range 1000+1700C</i><br><i>0.3 in Spot @ 9 in Dist</i><br><i>RAJ</i><br><i>4/27</i> |                      |           |             |
| THIS ORDER IS ACCEPTED SUBJECT TO TERMS AND CONDITIONS SHOWN ON THIS AND THE REVERSE SIDE |                                   |   |     |  | GRAND TOTAL          |           | USD2,500.00 |

SHIP TO: IRCON, INC.  
 7300 N. NATCHEZ AVE.  
 NILES, IL 60714 USA

IF TAX EXEMPT, PLEASE PROVIDE COPY OF  
 EXEMPTION OR DIRECT PAYMENT CERTIFICATE



IRCON, INC.  
7300 North Natchez Avenue  
Niles, Illinois 60714 USA

Telephone 847-967-5151  
Toll Free 800-323-7660  
Fax 847-647-0948

ISO 9001/QS 9000 TE  
Quality Systems Certified

**Modified Standard Product**  
**Data Form**

*A modified standard product is a product that is based on a standard product found in the most recent price list. The modifications maybe items such as; temperature ranges, output types, resolution, response time and optical issues. A modified standard product form is to be completed and submitted to Steve Schumm and Gene Kalley for review and approval based on the modification (which we have done before). If the modification has not been done before, the approval will require the entire senior management team's approval BEFORE QUOTING. A modified standard product if approved; this product will become a price listed standard product. We can then pay commission as outlined in our most recent contract.*

- Standard Product is a Model Number: RNE31-13C
- Standard Product List Price: \$ 1075
- The product change requested would be: Reps R726  
1000-1700C      Sales will attach specifics to this form.
- The market is willing to pay \$2500 for this product (total including standard price).
- What is engineering's expected time investment and cost: 1 hour Man Days  
\$ 100.00
- What is production's expected purchasing and production time requirement: \_\_\_\_\_ Days
- This new product has potential in the following application and estimated potential per year would be \_\_\_\_\_ per year.

- This product will be  not be \_\_\_\_\_ quoted and produced as previously outlined.
- Agreed on this date of \_\_\_\_\_ By production/purchasing \_\_\_\_\_  
By engineering A. DONADO 5/2/06
- Sales can now quote this project for \$ \_\_\_\_\_ per unit. W.O. 21384  
\_\_\_\_\_ lead time.

\_\_\_\_\_ Add to standard product list in literature (Maxine)  
\_\_\_\_\_ Add to price list (Vern)  
cc/ Greg P, Paul V, Regional Sales Staff Globally

W.O.# 21384

Process: CFG-R-09  
02 MAY 2006

IRCON INC  
Indented Configuration Bom

Page 1  
10:01:20

Number :DN-HO#29743 - IRCON INFRARAIL IRT SO-LI: 90987\*1

| Level | Part Number | Description               | Quantity | UM | Alt. | MB | X | ECO No. | ECO Date | Start Use | End Use |
|-------|-------------|---------------------------|----------|----|------|----|---|---------|----------|-----------|---------|
| 1     | DN1DNE      | DN PRICES                 | 1.0000   | EA |      |    |   |         |          |           |         |
| 1     | C11148      | SENSING HEAD FINAL ASSEMB | 1.0000   | EA |      |    |   |         |          |           |         |
| 2     | 447312      | S.H. MECH ASSY SPL#E724   | 1.0000   | EA |      |    |   |         |          |           |         |
| 2     | 20081267D   | SCREW #8-32 X 3/8" SOCKET | 1.0000   | EA |      |    |   |         |          |           |         |
| 2     | 611032      | LENS PLANO CONVEX 12.5MM  | 1.0000   | EA |      |    |   |         |          |           |         |
| 2     | B11147      | DETECTOR ASSEMBLY         | 1.0000   | EA |      |    |   |         |          |           |         |
| 3     | 501743      | PCB DETECTOR SILICON SPEC | 1.0000   | EA |      |    |   |         |          |           |         |
| 3     | 445172      | STANDOFF SWAGE 1/8OD X 3/ | 3.0000   | EA |      |    |   |         |          |           |         |
| 3     | 410312      | SCREW #00-80 X 3/19 PAN H | 3.0000   | EA |      |    |   |         |          |           |         |
| 3     | 432242      | PLASTIC SPACER .219" LONG | 1.0000   | EA |      |    |   |         |          |           |         |
| 3     | 590532      | DET. SILCN MOD+/V/W/MAX/M | 1.0000   | EA |      |    |   |         |          |           |         |
| 3     | 454122      | DET. FIELD STOP .030 DIA  | 1.0000   | EA |      |    |   |         |          |           |         |
| 3     | 640482      | FILTER BANDPASS 0.7-1.0U  | 1.0000   | EA |      |    |   |         |          |           |         |
| 3     | 990100002   | EPOXY HARDMAN #4005 GEN P | 1.0000   | EA |      |    |   |         |          |           |         |
| 2     | 473752      | LABEL REIMAGING Z LENS    | 1.0000   | EA |      |    |   |         |          |           |         |
| 2     | 990100002   | EPOXY HARDMAN #4005 GEN P | 1.0000   | EA |      |    |   |         |          |           |         |

R726 (sensor only)

W.O.# 21388

Number :DN-HO#29744 - IRCON INFRARAIL IRT SO-LI: 90988\*1

| Level | Part Number | Description               | Quantity | UM | Alt. | MB | X | ECO No. | ECO Date | Start Use | End Use |
|-------|-------------|---------------------------|----------|----|------|----|---|---------|----------|-----------|---------|
| 1     | DN1DNE      | DN PRICES                 | 1.0000   | EA |      |    |   |         |          |           |         |
| 1     | C11148      | SENSING HEAD FINAL ASSEMB | 1.0000   | EA |      |    |   |         |          |           |         |
| 2     | 447312      | S.H. MECH ASSY SPL#E724   | 1.0000   | EA |      |    |   |         |          |           |         |
| 2     | 20081267D   | SCREW #8-32 X 3/8" SOCKET | 1.0000   | EA |      |    |   |         |          |           |         |
| 2     | 611032      | LENS PLANO CONVEX 12.5MM  | 1.0000   | EA |      |    |   |         |          |           |         |
| 2     | B11147      | DETECTOR ASSEMBLY         | 1.0000   | EA |      |    |   |         |          |           |         |
| 3     | 501743      | PCB DETECTOR SILICON SPEC | 1.0000   | EA |      |    |   |         |          |           |         |
| 3     | 445172      | STANDOFF SWAGE 1/8OD X 3/ | 3.0000   | EA |      |    |   |         |          |           |         |
| 3     | 410312      | SCREW #00-80 X 3/19 PAN H | 3.0000   | EA |      |    |   |         |          |           |         |
| 3     | 432242      | PLASTIC SPACER .219" LONG | 1.0000   | EA |      |    |   |         |          |           |         |
| 3     | 590532      | DET. SILCN MOD+/V/W/MAX/M | 1.0000   | EA |      |    |   |         |          |           |         |
| 3     | 454122      | DET. FIELD STOP .030 DIA  | 1.0000   | EA |      |    |   |         |          |           |         |
| 3     | 640482      | FILTER BANDPASS 0.7-1.0U  | 1.0000   | EA |      |    |   |         |          |           |         |
| 3     | 990100002   | EPOXY HARDMAN #4005 GEN P | 1.0000   | EA |      |    |   |         |          |           |         |
| 2     | 473752      | LABEL REIMAGING Z LENS    | 1.0000   | EA |      |    |   |         |          |           |         |
| 2     | 990100002   | EPOXY HARDMAN #4005 GEN P | 1.0000   | EA |      |    |   |         |          |           |         |

R726 (sensor Only)



IRCON, INC T 847-967-5151  
 7300 North Natchez Ave T 800-323-7660  
 Niles, Illinois 60714 USA F 847-647-0948

# Acknowledgment

ORDER DATE: 08 SEP 2006

REV: DATE:

Customer No. 009013  
 SOLD TO

KAYEX TECHNICAL CENTER  
 1000 MILLSTEAD WAY  
 ROCHESTER, NY 14624

**SHIP TO**

KAYEX TECHNICAL CENTER  
 1000 MILLSTEAD WAY  
 ROCHESTER, NY 14624

**SPECIAL SHIPPING INSTRUCTIONS**

ACCT NO. 129250

|               |             |                |                      |
|---------------|-------------|----------------|----------------------|
| OUR ORDER No. | YOUR PO No. | F.O.B.         | TAX                  |
| 91971         | S061669     | ORIGIN         | Resale               |
| SHIP VIA      | TERMS       | DATE REQUESTED | SALES REPRESENTATIVE |
| UPS COLLECT   | 0.00/0/30   | 09-27-06       | 1227 (100.00)        |

| LI | PART NO.                              | PRODUCT/DESCRIPTION  | QTY | UNIT PRICE | DISC | NET PRICE             | EXTENSION |
|----|---------------------------------------|--|-----|------------|------|-----------------------|-----------|
| 1  | DN-HO#31261<br><i>w.o.#<br/>22300</i> | <del>DN_DNE31-13C</del> <i>DN999-99C</i><br>IRCON INFRARAIL IRT<br>SENSING HEAD ONLY<br>Consists of the following:<br>1.0000 - INFRARAIL HEAD ONLY<br>1.0000 - DN - <del>E</del> <i>SERIES SPECIAL</i><br>1.0000 - <del>D/100 RESOLUTION (E)</del> <i>Temp Range 1000-1700C</i><br>1.0000 - <del>800-1300C</del> <i>1520-1700C</i><br><i>special</i> | 1   | 2250.00    | 0.0  | 2250.00               | 2250.00   |
|    |                                       |  |     |            |      | <i>Redy Spec R726</i> |           |
|    |                                       |  |     |            |      | <i>9/8/06</i>         |           |

THIS ORDER IS ACCEPTED SUBJECT TO TERMS AND CONDITIONS SHOWN ON THIS AND THE REVERSE SIDE

**GRAND TOTAL**

USD2,250.00

SHIP TO: IRCON, INC.  
 7300 N. NATCHEZ AVE.  
 NILES, IL 60714 USA

IF TAX EXEMPT, PLEASE PROVIDE COPY OF  
 EXEMPTION OR DIRECT PAYMENT CERTIFICATE



IRCON, INC.  
7300 North Natchez Avenue  
Niles, Illinois 60714 USA

Telephone 847-967-5151  
Toll Free 800-323-7660  
Fax 847-647-0948

ISO 9001/OS 9000 TE  
Quality Systems Certified

**Modified Standard Product**  
**Data Form**

*A modified standard product is a product that is based on a standard product found in the most recent price list. The modifications maybe items such as; temperature ranges, output types, resolution, response time and optical issues. A modified standard product form is to be completed and submitted to Steve Schumm and Gene Kalley for review and approval based on the modification (which we have done before). If the modification has not been done before, the approval will require the entire senior management team's approval BEFORE QUOTING. A modified standard product if approved, this product will become a price listed standard product. We can then pay commission as outlined in our most recent contract.*

- Standard Product is a Model Number: DAVEB1-13C
- Standard Product List Price: \$ 1945
- The product change requested would be: Redy R726
- 1000-1700C Sales will attach specifics to this form.
- The market is willing to pay: 2250 for this product (total including standard price).
- What is engineering's expected time investment and cost: 1 HOUR Man Days  
\$ 100.00
- What is production's expected purchasing and production time requirement:      Days
- This new product has potential in the following application and estimated potential per year would be      per year.

---

- This product will be  not be  quoted and produced as previously outlined.
- Agreed on this date of      By production/purchasing
- By engineering A. DONADO 9/11/06
- W.O.# 22300
- Sales can now quote this project for \$      per unit.
- lead time.

     Add to standard product list in literature (Maxine)  
     Add to price list (Vern)  
cc/ Greg P, Paul V, Regional Sales Staff Globally

W.O.# 22300

Process: CFG-R-09  
11 SEP 2006

IRCON INC  
Indented Configuration Bom

Page 1  
13:57:35

Number :DN-HO#31261 - IRCON INFRARAIL IRT SO-LI: 91971\*1

| Level | Part Number | Description               | Quantity | UM | Alt. | MB X | ECO No. | ECO Date | Start Use | End Use |
|-------|-------------|---------------------------|----------|----|------|------|---------|----------|-----------|---------|
| 1     | DN1DNE      | DN PRICES                 | 1.0000   | EA |      | M P  |         |          |           |         |
| 1     | C11148      | SENSING HEAD FINAL ASSEMB | 1.0000   | EA |      | M P  |         |          |           |         |
| 2     | 447312      | S.H. MECH ASSY SPL#E724   | 1.0000   | EA |      | B    |         |          |           |         |
| 2     | 20081267D   | SCREW #8-32 X 3/8" SOCKET | 1.0000   | EA |      | B    |         |          |           |         |
| 2     | 611032      | LENS PLANO CONVEX 12.5MM  | 1.0000   | EA |      | B    |         |          |           |         |
| 2     | B11147      | DETECTOR ASSEMBLY         | 1.0000   | EA |      | M P  |         |          |           |         |
| 3     | 501743      | PCB DETECTOR SILICON SPEC | 1.0000   | EA |      | B    |         |          |           |         |
| 3     | 445172      | STANDOFF SWAGE 1/80D X 3/ | 3.0000   | EA |      | B    |         |          |           |         |
| 3     | 410312      | SCREW #00-80 X 3/19 PAN H | 3.0000   | EA |      | B    |         |          |           |         |
| 3     | 432242      | PLASTIC SPACER .219" LONG | 1.0000   | EA |      | B    |         |          |           |         |
| 3     | 590532      | DET. SILCN MOD+/V/W/MAX/M | 1.0000   | EA |      | B    |         |          |           |         |
| 3     | 454122      | DET. FIELD STOP .030 DIA  | 1.0000   | EA |      | B    |         |          |           |         |
| 3     | 640482      | FILTER BANDPASS 0.7-1.0U  | 1.0000   | EA |      | B    |         |          |           |         |
| 3     | 990100002   | EPOXY HARDMAN #4005 GEN P | 1.0000   | EA |      | B    |         |          |           |         |
| 2     | 473752      | LABEL REIMAGING Z LENS    | 1.0000   | EA |      | B    |         |          |           |         |
| 2     | 990100002   | EPOXY HARDMAN #4005 GEN P | 1.0000   | EA |      | B    |         |          |           |         |

R 726



# Acknowledgment

IRCON, INC T 847-967-5151  
 7300 North Natchez Ave T 800-323-7660  
 Niles, Illinois 60714 USA F 847-647-0948

ORDER DATE: 16 OCT 2006

REV: DATE:

Customer No. 009013  
 SOLD TO

SHIP TO  
 KAYEX TECHNICAL CENTER  
 1000 MILLSTEAD WAY  
 ROCHESTER, NY 14624

KAYEX TECHNICAL CENTER  
 1000 MILLSTEAD WAY  
 ROCHESTER, NY 14624

SPECIAL SHIPPING INSTRUCTIONS

ACCT NO. 129250

| OUR ORDER No.   |                                       | YOUR PO No.  |  | F.O.B.         |     |                      | TAX    |                            |           |
|---|---------------------------------------|--|--|----------------|-----|----------------------|--------|----------------------------|-----------|
| 92263   |                                       | 064304   |  | ORIGIN         |     |                      | Resale |                            |           |
| SHIP VIA  |                                       | TERMS  |  | DATE REQUESTED |     | SALES REPRESENTATIVE |        |                            |           |
| UPS COLLECT   |                                       | 0.00/0/30  |  | 11-28-06       |     | 1227 (100.00)        |        |                            |           |
| LI  | PART NO.                              | PRODUCT/DESCRIPTION  |  |                | QTY | UNIT PRICE           | DISC   | NET PRICE                  | EXTENSION |
| 1   | DN-HO#31723<br><i>w.o.#<br/>22602</i> | <del>DN_DNE31-13C</del> <i>DN999-99C</i><br>IRCON INFRARAIL IRT<br>SENSING HEAD ONLY<br>Consists of the following:<br>1.0000 - INFRARAIL HEAD ONLY<br>1.0000 - DN - <del>E</del> -SERIES <i>SPECIAL</i><br>1.0000 - <del>D/100</del> RESOLUTION <del>(E)</del> <i>SPECIAL RES</i><br>1.0000 - <del>800-1300C</del> <i>Temp range</i> |  |                | 1   | 2500.00              | 0.0    | 2500.00                    | 2500.00   |
|   |                                       |  |  |                |     |                      |        | <i>Order Spec No R1726</i> |           |
|   |                                       |  |  |                |     |                      |        | <i>1000 to 1700</i>        |           |
|   |                                       |  |  |                |     |                      |        | <i>10/17</i>               |           |
| THIS ORDER IS ACCEPTED SUBJECT TO TERMS AND CONDITIONS SHOWN ON THIS AND THE REVERSE SIDE |                                       |  |  |                |     | GRAND TOTAL          |        | USD2,500.00                |           |

SHIP TO: IRCON, INC.  
 7300 N. NATCHEZ AVE.  
 NILES, IL 60714 USA

IF TAX EXEMPT, PLEASE PROVIDE COPY OF  
 EXEMPTION OR DIRECT PAYMENT CERTIFICATE



IRCON, INC.  
7300 North Natchez Avenue  
Niles, Illinois 60714 USA

Telephone 847-967-5151  
Toll Free 800-323-7660  
Fax 847-647-0948

ISO 9001/QS 9000 TE  
Quality Systems Certified

### Modified Standard Product Data Form

*A modified standard product is a product that is based on a standard product found in the most recent price list. The modifications maybe items such as; temperature ranges, output types, resolution, response time and optical issues. A modified standard product form is to be completed and submitted to Steve Schumm and Gene Kalley for review and approval based on the modification (which we have done before). If the modification has not been done before, the approval will require the entire senior management team's approval BEFORE QUOTING. A modified standard product if approved; this product will become a price listed standard product. We can then pay commission as outlined in our most recent contract.*

- Standard Product is a Model Number: DUE31-13C
- Standard Product List Price: \$ 1120
- The product change requested would be: Redo R726
- Spec Senior 1000-1700C Sales will attach specifics to this form.
- The market is willing to pay \$2500 for this product (total including standard price).
- What is engineering's expected time investment and cost: 1 hour Man Days  
\$ 100<sup>00</sup>
- What is production's expected purchasing and production time requirement:      Days
- This new product has potential in the following application and estimated potential per year would be      per year.

➤ This product will be  not be  quoted and produced as previously outlined.

➤ Agreed on this date of      By production/purchasing       
By engineering A. DONADO

➤ Sales can now quote this project for \$      per unit. W.O.# 22602  
     lead time.

Add to standard product list in literature (Maxine)  
 Add to price list (Vern)  
cc/ Greg P, Paul V, Regional Sales Staff Globally



IRCON, INC T 847-967-5151  
 7300 North Natchez Ave T 800-323-7660  
 Niles, Illinois 60714 USA F 847-647-0948

# Acknowledgment

ORDER DATE: 16 OCT 2006

REV: DATE:

Customer No. 009013  
 SOLD TO

KAYEX TECHNICAL CENTER  
 1000 MILLSTEAD WAY  
 ROCHESTER, NY 14624

**SHIP TO**

KAYEX TECHNICAL CENTER  
 1000 MILLSTEAD WAY  
 ROCHESTER, NY 14624

**SPECIAL SHIPPING INSTRUCTIONS**

ACCT NO. 129250

| OUR ORDER No.   |                                   | YOUR PO No.  |  | F.O.B.         |     |                         | TAX    |             |           |
|---|-----------------------------------|--|--|----------------|-----|-------------------------|--------|-------------|-----------|
| 92264   |                                   | 064304   |  | ORIGIN         |     |                         | Resale |             |           |
| SHIP VIA  |                                   | TERMS  |  | DATE REQUESTED |     | SALES REPRESENTATIVE    |        |             |           |
| UPS COLLECT   |                                   | 0.00/0/30  |  | 01-16-07       |     | 1227 (100.00)           |        |             |           |
| LI  | PART NO.                          | PRODUCT/DESCRIPTION  |  |                | QTY | UNIT PRICE              | DISC   | NET PRICE   | EXTENSION |
| 1   | DN-HO#31724<br><br>W.O.#<br>22603 | <del>DN-DNE31-13C</del> <i>DN999-99C</i><br>IRCON INFRARAIL IRT<br>SENSING HEAD ONLY<br>Consists of the following:<br>1.0000 - INFRARAIL HEAD ONLY<br>1.0000 - DN <del>E</del> SERIES <i>SPEC</i><br>1.0000 - D/100 RESOLUTION <del>(E)</del> <i>SPEC Res</i><br>1.0000 - 800-1300C<br><i>Temp Range 1000 to 1700C</i> |  |                | 1   | 2500.00                 | 0.0    | 2500.00     | 2500.00   |
|   |                                   |  |  |                |     | <i>Recl 5/2. R 72 6</i> |        |             |           |
|   |                                   |  |  |                |     | <i>10/17</i>            |        |             |           |
| THIS ORDER IS ACCEPTED SUBJECT TO TERMS AND CONDITIONS SHOWN ON THIS AND THE REVERSE SIDE |                                   |  |  |                |     | <b>GRAND TOTAL</b>      |        | USD2,500.00 |           |

SHIP TO: IRCON, INC.  
 7300 N. NATCHEZ AVE.  
 NILES, IL 60714 USA

IF TAX EXEMPT, PLEASE PROVIDE COPY OF EXEMPTION OR DIRECT PAYMENT CERTIFICATE



IRCON, INC.  
 7300 North Natchez Avenue  
 Niles, Illinois 60714 USA

Telephone 847-967-5151  
 Toll Free 800-323-7660  
 Fax 847-647-0948

ISO 9001/OS 9000 TE  
 Quality Systems Certified

**Modified Standard Product**  
**Data Form**

*A modified standard product is a product that is based on a standard product found in the most recent price list. The modifications maybe items such as; temperature ranges, output types, resolution, response time and optical issues. A modified standard product form is to be completed and submitted to Steve Schumm and Gene Kalley for review and approval based on the modification (which we have done before). If the modification has not been done before, the approval will require the entire senior management team's approval BEFORE QUOTING. A modified standard product if approved; this product will become a price listed standard product. We can then pay commission as outlined in our most recent contract.*

- Standard Product is a Model Number: DNE 31-13C
- Standard Product List Price: \$1120
- The product change requested would be: Redo Spec R726  
Spec Sensor 1000-1700 *Sales will attach specifics to this form.*
- The market is willing to pay \$2500 for this product (total including standard price).
- What is engineering's expected time investment and cost: 1 HOUR Man Days  
\$100<sup>00</sup>
- What is production's expected purchasing and production time requirement: \_\_\_\_\_ Days
- This new product has potential in the following application and estimated potential per year would be \_\_\_\_\_ per year.

➤ This product will be  not be \_\_\_\_\_ quoted and produced as previously outlined.

➤ Agreed on this date of \_\_\_\_\_ By production/purchasing \_\_\_\_\_  
 By engineering A-DONADO 10/18/06

➤ Sales can now quote this project for \$ \_\_\_\_\_ per unit. w.o. #22603  
 \_\_\_\_\_ lead time.

\_\_\_\_\_ Add to standard product list in literature (Maxine)  
 \_\_\_\_\_ Add to price list (Vern)  
 cc/ Greg P, Paul V, Regional Sales Staff Globally

W.O. # 22602

Number :DN-HO#31723 - IRCON INFRARAIL IRT SO-LI: 92263\*1

| Level | Part Number | Description               | Quantity | UM | Alt | MB | X | ECO No. | ECO Date | Start Use | End Use |
|-------|-------------|---------------------------|----------|----|-----|----|---|---------|----------|-----------|---------|
| 1     | DN1DNE      | DN PRICES                 | 1.0000   | EA |     | M  | P |         |          |           |         |
| 1     | C11148      | SENSING HEAD FINAL ASSEMB | 1.0000   | EA |     | M  | P |         |          |           |         |
| 2     | 447312      | S.H. MECH ASSY SPL#E724   | 1.0000   | EA |     | B  |   |         |          |           |         |
| 2     | 20081267D   | SCREW #8-32 X 3/8" SOCKET | 1.0000   | EA |     | B  |   |         |          |           |         |
| 2     | 611032      | LENS PLANO CONVEX 12.5MM  | 1.0000   | EA |     | B  |   |         |          |           |         |
| 2     | B11147      | DETECTOR ASSEMBLY         | 1.0000   | EA |     | M  | P |         |          |           |         |
| 3     | 501743      | PCB DETECTOR SILICON SPEC | 1.0000   | EA |     | B  |   |         |          |           |         |
| 3     | 445172      | STANDOFF SWAGE 1/8OD X 3/ | 3.0000   | EA |     | B  |   |         |          |           |         |
| 3     | 410312      | SCREW #00-80 X 3/19 PAN H | 3.0000   | EA |     | B  |   |         |          |           |         |
| 3     | 432242      | PLASTIC SPACER .219" LONG | 1.0000   | EA |     | B  |   |         |          |           |         |
| 3     | 590532      | DET. SILCN MOD+/V/W/MAX/M | 1.0000   | EA |     | B  |   |         |          |           |         |
| 3     | 454122      | DET. FIELD STOP .030 DIA  | 1.0000   | EA |     | B  |   |         |          |           |         |
| 3     | 640482      | FILTER BANDPASS 0.7-1.0U  | 1.0000   | EA |     | B  |   |         |          |           |         |
| 3     | 990100002   | EPOXY HARDMAN #4005 GEN P | 1.0000   | EA |     | B  |   |         |          |           |         |
| 2     | 473752      | LABEL REIMAGING Z LENS    | 1.0000   | EA |     | B  |   |         |          |           |         |
| 2     | 990100002   | EPOXY HARDMAN #4005 GEN P | 1.0000   | EA |     | B  |   |         |          |           |         |

R726 (Sensor Only)

W.O. # 22603

Process: CFG-R-09  
18 OCT 2006

IRCON INC  
Indented Configuration Bom

Page 1  
09:51:23

Number :DN-HO#31724 - IRCON INFRARAIL IRT SO-LI: 92264\*1

| Level | Part Number | Description               | Quantity | UM | Alt | MB | X | ECO No. | ECO Date | Start Use | End Use |
|-------|-------------|---------------------------|----------|----|-----|----|---|---------|----------|-----------|---------|
| 1     | DN1DNE      | DN PRICES                 | 1.0000   | EA |     | M  | P |         |          |           |         |
| 1     | C11148      | SENSING HEAD FINAL ASSEMB | 1.0000   | EA |     | M  | P |         |          |           |         |
| 2     | 447312      | S.H. MECH ASSY SPL#E724   | 1.0000   | EA |     | B  |   |         |          |           |         |
| 2     | 20081267D   | SCREW #8-32 X 3/8" SOCKET | 1.0000   | EA |     | B  |   |         |          |           |         |
| 2     | 611032      | LENS PLANO CONVEX 12.5MM  | 1.0000   | EA |     | B  |   |         |          |           |         |
| 2     | B11147      | DETECTOR ASSEMBLY         | 1.0000   | EA |     | M  | P |         |          |           |         |
| 3     | 501743      | PCB DETECTOR SILICON SPEC | 1.0000   | EA |     | B  |   |         |          |           |         |
| 3     | 445172      | STANDOFF SWAGE 1/8OD X 3/ | 3.0000   | EA |     | B  |   |         |          |           |         |
| 3     | 410312      | SCREW #00-80 X 3/19 PAN H | 3.0000   | EA |     | B  |   |         |          |           |         |
| 3     | 432242      | PLASTIC SPACER .219" LONG | 1.0000   | EA |     | B  |   |         |          |           |         |
| 3     | 590532      | DET. SILCN MOD+/V/W/MAX/M | 1.0000   | EA |     | B  |   |         |          |           |         |
| 3     | 454122      | DET. FIELD STOP .030 DIA  | 1.0000   | EA |     | B  |   |         |          |           |         |
| 3     | 640482      | FILTER BANDPASS 0.7-1.0U  | 1.0000   | EA |     | B  |   |         |          |           |         |
| 3     | 990100002   | EPOXY HARDMAN #4005 GEN P | 1.0000   | EA |     | B  |   |         |          |           |         |
| 2     | 473752      | LABEL REIMAGING Z LENS    | 1.0000   | EA |     | B  |   |         |          |           |         |
| 2     | 990100002   | EPOXY HARDMAN #4005 GEN P | 1.0000   | EA |     | B  |   |         |          |           |         |

R726 (Sensor Only)



IRCON, INC T 847-967-5151  
 7300 North Natchez Ave T 800-323-7660  
 Niles, Illinois 60714 USA F 847-647-0948

# Acknowledgment

ORDER DATE: 10 NOV 2006  
 REV: DATE:

Customer No. 009013  
 SOLD TO

SHIP TO  
 KAYEX TECHNICAL CENTER  
 1000 MILLSTEAD WAY  
 ROCHESTER, NY 14624

KAYEX TECHNICAL CENTER  
 1000 MILLSTEAD WAY  
 ROCHESTER, NY 14624

SPECIAL SHIPPING INSTRUCTIONS  
 ACCT NO. 129250

| OUR ORDER No.   |                                   | YOUR PO No.  |  | F.O.B.   |                      |      | TAX         |           |
|---|-----------------------------------|--|--|--|----------------------|------|-------------|-----------|
| 92486   |                                   | S061798  |  | ORIGIN   |                      |      | Resale      |           |
| SHIP VIA  |                                   | TERMS  |  | DATE REQUESTED   | SALES REPRESENTATIVE |      |             |           |
| UPS COLLECT   |                                   | 0.00/0/30  |  | 12-05-06   | 1227 (100.00)        |      |             |           |
| LI  | PART NO.                          | PRODUCT/DESCRIPTION  |  | QTY  | UNIT PRICE           | DISC | NET PRICE   | EXTENSION |
| 1   | DN-HO#32060<br><br>w.o.#<br>22806 | <del>DN_DNE31-13C</del> <i>DN999-99C</i><br>IRCON INFRARAIL IRT<br>SENSING HEAD ONLY<br>Consists of the following:<br>1.0000 - INFRARAIL HEAD ONLY<br>1.0000 - DN <del>E</del> -SERIES <i>TEMP</i><br>1.0000 - <del>D/100 RESOLUTION (E)</del> <i>SPECIAL</i><br>1.0000 - <del>800-1300C</del> |  | 1  | 2500.00              | 0.0  | 2500.00     | 2500.00   |
|   |                                   |  |  | <i>Relo Spec No R726</i><br><i>Temp range 1000-1700C</i><br><i>RB 4/13</i> |                      |      |             |           |
| THIS ORDER IS ACCEPTED SUBJECT TO TERMS AND CONDITIONS SHOWN ON THIS AND THE REVERSE SIDE |                                   |  |  |  | GRAND TOTAL          |      | USD2,500.00 |           |

SHIP TO: IRCON, INC.  
 7300 N. NATCHEZ AVE.  
 NILES, IL 60714 USA

IF TAX EXEMPT, PLEASE PROVIDE COPY OF  
 EXEMPTION OR DIRECT PAYMENT CERTIFICATE



IRCON, INC.  
7300 North Natchez Avenue  
Niles, Illinois 60714 USA

Telephone 847-967-5151  
Toll Free 800-323-7660  
Fax 847-647-0948

ISO 9001/OS 9000 TE  
Quality Systems Certified

**Modified Standard Product**  
**Data Form**

A modified standard product is a product that is based on a standard product found in the most recent price list. The modifications maybe items such as; temperature ranges, output types, resolution, response time and optical issues. A modified standard product form is to be completed and submitted to Steve Schumm and Gene Kalley for review and approval based on the modification (which we have done before). If the modification has not been done before, the approval will require the entire senior management team's approval BEFORE QUOTING. A modified standard product if approved; this product will become a price listed standard product. We can then pay commission as outlined in our most recent contract.

- Standard Product is a Model Number: DNEP3-13C
- Standard Product List Price: \$ 1120
- The product change requested would be: Reds R726  
1000-1700C *Sales will attach specifics to this form.*
- The market is willing to pay \$2500 for this product (total including standard price).
- What is engineering's expected time investment and cost: 1 hour Man Days  
\$ 100.00
- What is production's expected purchasing and production time requirement: \_\_\_\_\_ Days
- This new product has potential in the following application and estimated potential per year would be \_\_\_\_\_ per year.

➤ This product will be  not be \_\_\_\_\_ quoted and produced as previously outlined.

➤ Agreed on this date of \_\_\_\_\_ By production/purchasing \_\_\_\_\_  
By engineering A. DONADO 11/15/06  
W.O.# 22806

➤ Sales can now quote this project for \$ \_\_\_\_\_ per unit.  
\_\_\_\_\_ lead time.

\_\_\_\_\_ Add to standard product list in literature (Maxine)  
\_\_\_\_\_ Add to price list (Vern)  
cc/ Greg P, Paul V, Regional Sales Staff Globally

W.O. # 22806

Process: CFG-R-09  
15 NOV 2006

IRCON INC  
Indented Configuration Bom

Page 1  
11:19:59

Number :DN-HO#32060 - IRCON INFRARAIL IRT SO-LI: 92486\*1

| Level | Part Number | Description               | Quantity | UM | Alt | MB | X | ECO No. | ECO Date | Start Use | End Use |
|-------|-------------|---------------------------|----------|----|-----|----|---|---------|----------|-----------|---------|
| 1     | DN1DNE      | DN PRICES                 | 1.0000   | EA |     |    |   |         |          |           |         |
| 1     | C11148      | SENSING HEAD FINAL ASSEMB | 1.0000   | EA |     |    |   |         |          |           |         |
| 2     | 447312      | S.H. MECH ASSY SPL#E724   | 1.0000   | EA |     |    |   |         |          |           |         |
| 2     | 20081267D   | SCREW #8-32 X 3/8" SOCKET | 1.0000   | EA |     |    |   |         |          |           |         |
| 2     | 611032      | LENS PLANO CONVEX 12.5MM  | 1.0000   | EA |     |    |   |         |          |           |         |
| 2     | B11147      | DETECTOR ASSEMBLY         | 1.0000   | EA |     |    |   |         |          |           |         |
| 3     | 501743      | PCB DETECTOR SILICON SPEC | 1.0000   | EA |     |    |   |         |          |           |         |
| 3     | 445172      | STANDOFF SWAGE 1/8OD X 3/ | 3.0000   | EA |     |    |   |         |          |           |         |
| 3     | 410312      | SCREW #00-80 X 3/19 PAN H | 3.0000   | EA |     |    |   |         |          |           |         |
| 3     | 432242      | PLASTIC SPACER .219" LONG | 1.0000   | EA |     |    |   |         |          |           |         |
| 3     | 590532      | DET. SILCN MOD+/V/W/MAX/M | 1.0000   | EA |     |    |   |         |          |           |         |
| 3     | 454122      | DET. FIELD STOP .030 DIA  | 1.0000   | EA |     |    |   |         |          |           |         |
| 3     | 640482      | FILTER BANDPASS 0.7-1.0U  | 1.0000   | EA |     |    |   |         |          |           |         |
| 3     | 990100002   | EPOXY HARDMAN #4005 GEN P | 1.0000   | EA |     |    |   |         |          |           |         |
| 2     | 473752      | LABEL REIMAGING Z LENS    | 1.0000   | EA |     |    |   |         |          |           |         |
| 2     | 990100002   | EPOXY HARDMAN #4005 GEN P | 1.0000   | EA |     |    |   |         |          |           |         |

R726 (SENSOR ONLY)



IRCON, INC T 847-967-5151  
 7300 North Natchez Ave T 800-323-7660  
 Niles, Illinois 60714 USA F 847-647-0948

# Acknowledgment

ORDER DATE: 08 MAR 2007  
 REV: DATE:

Customer No. 101308  
 SOLD TO

BULLEN SEMICONDUCTOR CORP  
 950 S. FRANKLIN STREET  
 EATON, OH 45320

**SHIP TO**

BULLEN SEMICONDUCTOR CORP  
 950 S. FRANKLIN STREET  
 EATON, OH 45320

**SPECIAL SHIPPING INSTRUCTIONS**

| OUR ORDER No.   |                                   | YOUR PO No.   |     | F.O.B.  |                      | TAX       |             |
|---|-----------------------------------|---|-----|---|----------------------|-----------|-------------|
| 93398   |                                   | 22202   |     | ORIGIN  |                      | Resale    |             |
| SHIP VIA  |                                   | TERMS   |     | DATE REQUESTED  | SALES REPRESENTATIVE |           |             |
| UPS   |                                   | 0.00/0/30   |     | 04-09-07  | 1003 (100.00)        |           |             |
| LI  | PART NO.                          | PRODUCT/DESCRIPTION   | QTY | UNIT PRICE  | DISC                 | NET PRICE | EXTENSION   |
| 1   | DN-HO#33411<br><br>W.O.#<br>23765 | DN <del>DNE31-13C</del> <i>DN999-99C</i><br>IRCON INFRARAIL IRT<br>SENSING HEAD ONLY<br>Consists of the following:<br>1.0000 - INFRARAIL HEAD ONLY<br>1.0000 - DN - E SERIES<br>1.0000 - D/100 RESOLUTION (E)<br>1.0000 - 800-1300C | 2   | 2600.00   | 0.0                  | 2600.00   | 5200.00     |
|   |                                   |   |     | <i>Redo Spec No R726</i><br><i>Temp range 1000-1700C</i><br><i>RAJ</i><br><i>3/8/07</i> |                      |           |             |
| THIS ORDER IS ACCEPTED SUBJECT TO TERMS AND CONDITIONS SHOWN ON THIS AND THE REVERSE SIDE |                                   |   |     |   | <b>GRAND TOTAL</b>   |           | USD5,200.00 |

SHIP TO: IRCON, INC.  
 7300 N. NATCHEZ AVE.  
 NILES, IL 60714 USA

IF TAX EXEMPT, PLEASE PROVIDE COPY OF  
 EXEMPTION OR DIRECT PAYMENT CERTIFICATE



IRCON, INC.  
 7300 North Natchez Avenue  
 Niles, Illinois 60714 USA

Telephone 847-967-5151  
 Toll Free 800-323-7660  
 Fax 847-647-0948

ISO 9001/QS 9000 TE  
 Quality Systems Certified

**Modified Standard Product**  
**Data Form**

A modified standard product is a product that is based on a standard product found in the most recent price list. The modifications maybe items such as; temperature ranges, output types, resolution, response time and optical issues. A modified standard product form is to be completed and submitted to Steve Schumm and Gene Kalley for review and approval based on the modification (which we have done before). If the modification has not been done before, the approval will require the entire senior management team's approval BEFORE QUOTING. A modified standard product if approved; this product will become a price listed standard product. We can then pay commission as outlined in our most recent contract.

- > Standard Product is a Model Number: DNE31-13C
- > Standard Product List Price: \$ 1100
- > The product change requested would be: Reds R726 - special  
Mini Sensor 1000-1700 Sales will attach specifics to this form.
- > The market is willing to pay \$2600 for this product (total including standard price).
- > What is engineering's expected time investment and cost: 1 HOUR Man Days  
\$ 100.00
- > What is production's expected purchasing and production time requirement:      Days
- > This new product has potential in the following application and estimated potential per year would be      per year.

> This product will be  not be  quoted and produced as previously outlined.

> Agreed on this date of      By production/purchasing       
 By engineering A.D. 3/23/07

> Sales can now quote this project for \$      per unit. W.O. #23765  
     lead time.

     Add to standard product list in literature (Maxine)  
     Add to price list (Vern)  
 cc/ Greg P, Paul V, Regional Sales Staff Globally

W.O.#23765

Process: CFG-R-09  
23 MAR 2007

IRCON INC  
Indented Configuration Bom

Page 1  
17:22:20

Number :DN-HO#33411 - IRCON INFRARAIL IRT SO-LI: 93398\*1

| Level | Part Number | Description               | Quantity | UM | Alt. | MB | X | ECO No. | ECO Date | Start Use | End Use |
|-------|-------------|---------------------------|----------|----|------|----|---|---------|----------|-----------|---------|
| 1     | DN1DNE      | DN PRICES                 | 1.0000   | EA |      | M  | P |         |          |           |         |
| 1     | C11148      | SENSING HEAD FINAL ASSEMB | 1.0000   | EA |      | M  | P |         |          |           |         |
| 2     | 447312      | S.H. MECH ASSY SPL#E724   | 1.0000   | EA |      | B  |   |         |          |           |         |
| 2     | 20081267D   | SCREW #8-32 X 3/8" SOCKET | 1.0000   | EA |      | B  |   |         |          |           |         |
| 2     | 611032      | LENS PLANO CONVEX 12.5MM  | 1.0000   | EA |      | B  |   |         |          |           |         |
| 2     | B11147      | DETECTOR ASSEMBLY         | 1.0000   | EA |      | M  | P |         |          |           |         |
| 3     | 501743      | PCB DETECTOR SILICON SPEC | 1.0000   | EA |      | B  |   |         |          |           |         |
| 3     | 445172      | STANDOFF SWAGE 1/8OD X 3/ | 3.0000   | EA |      | B  |   |         |          |           |         |
| 3     | 410312      | SCREW #00-80 X 3/19 PAN H | 3.0000   | EA |      | B  |   |         |          |           |         |
| 3     | 432242      | PLASTIC SPACER .219" LONG | 1.0000   | EA |      | B  |   |         |          |           |         |
| 3     | 590532      | DET. SILCN MOD+/V/W/MAX/M | 1.0000   | EA |      | B  |   |         |          |           |         |
| 3     | 454122      | DET. FIELD STOP .030 DIA  | 1.0000   | EA |      | B  |   |         |          |           |         |
| 3     | 640482      | FILTER BANDPASS 0.7-1.0U  | 1.0000   | EA |      | B  |   |         |          |           |         |
| 3     | 990100002   | EPOXY HARDMAN #4005 GEN P | 1.0000   | EA |      | B  |   |         |          |           |         |
| 2     | 473752      | LABEL REIMAGING Z LENS    | 1.0000   | EA |      | B  |   |         |          |           |         |
| 2     | 990100002   | EPOXY HARDMAN #4005 GEN P | 1.0000   | EA |      | B  |   |         |          |           |         |

R726

(Sensor Only)